

LEAGUE TABLES

FOOTBALL LEAGUE

FOOTBALL COMBINATION

DIVISION I

Up to and incl. 29th March	P.	W.	D.	L.	F.	A.	Ps.
Leeds United	34	23	9	2	59	24	55
Liverpool	33	22	6	5	54	20	50
Arsenal	33	19	9	5	45	18	47
Everton	32	17	10	5	65	29	44
West Ham Un.	34	13	14	7	62	41	40
Chelsea	36	17	8	11	64	46	42
Southampton	37	13	12	12	45	43	38
Tottenham H.	34	10	16	8	51	44	36
Burnley	36	13	9	14	47	69	35
Ipswich	35	12	9	14	51	51	33
Manchester Un.	35	10	12	13	45	45	32
Wolverhampton	35	9	14	12	35	45	32
Manchester City	33	11	9	13	57	45	31
Newcastle United	32	10	11	11	42	43	31
Sheffield Wed.	32	10	11	11	34	39	31
West Bromwich	33	11	8	14	44	56	30
Nottingham F.	34	8	12	14	40	47	28
Stoke City	35	8	12	15	35	51	28
Sunderland	35	9	10	16	38	62	28
Coventry City	35	8	8	19	41	56	24
Leicester City	31	6	10	15	28	53	22
Queen's Park R.	38	3	9	26	34	89	15

Up to and incl. 29th March

Goals	P.	W.	D.	L.	F.	A.	Ps.
Arsenal	19	15	4	0	58	12	34
Fulham	21	16	2	3	69	28	34
Tottenham Hotspur	21	14	3	4	57	25	31
Crystal Palace	23	14	3	6	42	30	31
West Ham United	22	9	11	2	39	23	29
Ipswich Town	19	11	4	4	53	29	26
Bristol City	20	11	2	7	39	27	24
Queen's Park R.	22	8	7	7	39	40	23
Southampton	21	9	4	8	30	18	22
Chelsea	21	9	3	9	38	34	21
Gillingham	18	8	5	5	20	20	21
Norwich City	21	6	8	7	41	37	20
Cardiff City	21	8	4	9	27	32	20
Bristol Rovers	22	8	4	10	37	48	20
Birmingham City	22	7	5	10	35	30	19
Walsall	20	7	5	8	34	31	19
Peterborough Un.	21	4	10	7	25	32	18
Plymouth Argyle	21	6	5	10	18	32	17
Luton Town	20	5	7	8	21	41	17
Leicester City	19	6	4	9	26	34	16
Oxford United	19	6	3	10	22	40	15
Swansea Town	19	4	6	9	25	42	14
Bournemouth & B.	20	3	7	9	23	42	13
Swindon Town	21	4	4	13	15	35	12
Northampton Town	21	4	2	15	23	55	10
Reading	22	4	2	16	22	61	10

METROPOLITAN LEAGUE

SOUTH-EAST COUNTIES

Up to and incl. 29th March	P.	W.	D.	L.	F.	A.	Ps.
Met. Police	23	13	4	6	62	42	30
Tottenham H.	21	11	7	3	49	28	29
West Ham Un.	25	11	6	8	43	34	28
Bletchley	21	10	5	6	27	19	25
Stevenage Ath.	20	9	7	4	35	25	25
Romford	25	9	6	10	49	52	24
Chelmsford City	22	9	5	8	55	36	23
Braintree & Critt.	18	7	8	3	24	16	22
Sheppey United	20	8	5	7	41	41	21
Bury Town	17	9	2	6	30	18	20
Wellingborough	21	9	1	11	38	42	19
Cray Wanderers	16	6	4	6	24	21	16
Hatfield Town	18	4	8	6	27	30	16
Arsenal	23	6	2	15	24	49	14
Wimbledon	22	5	2	15	22	54	12
Bedford Town	22	3	4	15	24	58	10

DIVISION I

Up to and incl. 29th March	P.	W.	D.	L.	F.	A.	Ps.
Millwall	28	23	4	1	114	31	50
Ipswich Town	25	19	5	1	77	23	43
Orient	23	16	6	1	70	31	38
Charlton Athletic	25	15	6	4	61	30	36
Queen's Park R.	25	14	4	7	58	37	32
Crystal Palace	27	15	1	11	64	59	31
Tottenham H.	26	12	2	12	73	39	26
West Ham Un.	27	9	7	11	47	57	25
Chelsea	24	10	2	12	61	51	22
Luton Town	24	7	7	10	46	54	21
Colchester Un.	27	9	3	15	42	88	21
Fulham	25	8	3	14	35	47	19
Watford	27	8	3	16	37	77	19
Reading	26	6	5	15	39	86	17
Brighton & Hove	27	6	4	17	43	69	16
Gillingham	21	4	1	16	21	48	9
Oxford United	23	1	3	19	13	74	5



FOOTBALL LEAGUE—DIVISION ONE

TOTTENHAM HOTSPUR

v.

NEWCASTLE UNITED

Official Programme

Price SIXPENCE



SEASON 1968-69

Vol. 61

No. 51

Wednesday, 2nd April, 1969

KICK-OFF 7.30 p.m.



Spurs v. Chelsea. An anxious moment for Chelsea's defence.

Photo by Central Press Photos Ltd.

TOTTENHAM HOTSPUR

FOOTBALL AND ATHLETIC COMPANY LIMITED

Chairman: FREDK. WALE Vice-Chairman: S. A. WALE

Directors: C. F. COX, A. RICHARDSON, H. G. S. GROVES

Manager: W. E. NICHOLSON Secretary: G. W. JONES Medical Officers: Dr. BRIAN CURTIN

League Champions: 1950-51, 1960-61

F.A. Cup Winners: 1901, 1921, 1961, 1962, 1967

Winners of European Cup Winners Cup: 1963

COPYRIGHT

ALL RIGHTS RESERVED

COMMENT

IN welcoming Newcastle United to White Hart Lane this evening, it is our first duty and a pleasure to congratulate our Tynesiders on reaching the Semi-finals of the Inter-Cities Fairs Cup.

Newcastle occupy a position in the lower half of the First Division, but their success in the Fairs Cup adds considerable impetus to their play in the closing weeks of the season, and it is particularly gratifying to the St. James's Park club that they should have done so well as the first representatives of the North-East to participate in European competition.

Newcastle were, in fact, beaten 1-3 by Vitoria Setubal in Lisbon last week, but their earlier 5-1 win at home against the Portuguese club carried them through to the Fairs Cup Semi-final on a 6-4 aggregate.

In the earlier rounds of the Fairs Cup Newcastle beat Feyenoord (4-2 aggregate), Sporting Lisbon (2-1 aggregate) and Real Saragoza on away goals after finishing at 4-4 over the two matches.

EARLY EXITS

In domestic Cup competitions Newcastle have enjoyed a lot less success this season. Manchester City defeated them in a replayed Fourth Round tie in the F.A. Cup, and they also fell at the second hurdle in the League Cup to Southampton.

In the League Newcastle have two away wins to their credit, and on five

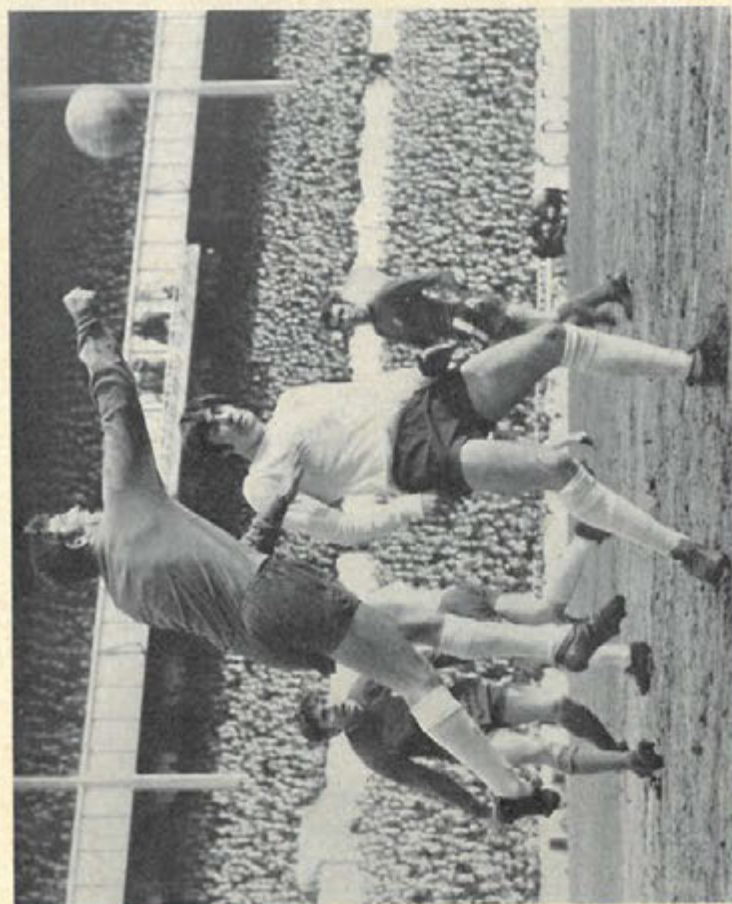
occasions they have picked up a point away from home. Their away victories were over Nottingham Forest (4-2) and Ipswich Town (4-1).

The clubs who surrendered a home point to the Tynesiders were Sheffield Wednesday, Sunderland and Queen's Park Rangers (each 1-1) and Arsenal and Southampton (0-0).

On their own ground Newcastle have been beaten twice this season. Their colours were lowered on Tyneside by West Bromwich Albion (2-3) and Leeds United (0-1). Newcastle's 2-0 win over Coventry last Saturday was their eighth at home in the League, but they have been held to a draw by six visiting clubs, including ourselves. Their heaviest defeat was 0-5 away to Wolves.

QUIZ FOR TONIGHT—Answers on page 13

1. Who is the former Spurs and Newcastle player now managing a Fourth Division club?
2. Why was 1950-51 a memorable season for both Spurs and Newcastle?
3. What was the half-time score when we drew at Newcastle in September?
4. A former Newcastle centre-half played against Spurs for another club in the Football League Cup this season. Can you name him and his present club?
5. Pat Jennings (Spurs) and Ian McFaul (Newcastle) once kept goal for Ireland in the same match! When and how did it happen?



Spurs v. Chelsea. Pat Jennings clears a Chelsea attack with a hefty punch.

Photo by Central Press Photos Ltd.

SIXTEENTH DRAW

Burnley 2, Spurs 2

Our draw at Burnley on Saturday was the 16th in the League this season. That equals the club's record number of League draws in one season set up in the Second Division in season 1948-49.

It was a pleasing performance in view of the necessity to include a number of our young players for the second time in a week. Burnley have some skilful forwards, and Ralph Coates, in particular, is in peak form.

It was John Pratt's job to mark Coates, and he performed his task uncommonly well for a player making only his second League appearance.

Eric Probert's goal gave Burnley an early lead, but Spurs were level in the 37th minute, when Neil Johnson steered the ball in following a free-kick by Terry Venables and a touch by Mike England, who captained the team in the absence of Alan Mullery.

Coates regained the lead for Burnley before half-time, but Jimmy Pearce scored a late equaliser following a chipped pass from Ray Evans. England's presence upset Burnley's defence, and Pearce anticipated his chance well to shoot from close range.

SPURS: Jennings; Evans, Want; Johnson, Pratt, Collins, P.; Pearce, Greaves, England, Venables and Morgan.

Dennis Bond stood by as substitute.

Attendance: 14,445.

HOME DEFEAT

Spurs Res. 0, Arsenal Res. 1

The Reserves were beaten in a home match last Saturday for the first time this season. A single goal sufficed to give Arsenal victory, and it was netted on the half-hour by George Johnston following a defensive lapse on our part.

We have no complaint over the result, but it was a pity we were below normal strength for a stiff Reserve engagement of this kind. Moreover, David Jenkins, who skippered the side against his former club, had to leave the field with a badly sprained ankle in the 20th minute, and was replaced by Billy Mail.

With a number of our usual Combination players on senior duty at Burnley, we had to call on four members of the

"A" team who had played at Chelmsford the previous evening.

Our nearest scoring attempts in the first half were a shot from Ray Bunkell that just cleared the bar, and another from Mail that was deflected for a corner.

Spurs showed more determination in the second half, but our only threat to Arsenal was a shot hooked wide by John Gilroy.

Team: Hancock; Cutbush, Holder, P.; T. Naylor, Bish, Gilroy; Jenkins (sub. Mail), Bunkell, Perryman, Woolcott and Pitt.

LATE GOALS

Chelmsford City Res. 1, Spurs "A" 1

The "A" team brought back a valuable point from Chelmsford in their Metropolitan League match last Friday evening.

Both goals came late in the game, but it was only good defensive work by Chelmsford that kept us out until such a late stage.

Chelmsford were, in fact, the first to score, but only a few minutes later Billy Mail put us level following a corner.

Team: Daines; Holder, P., Bish; Dillon, Henry, Edwards; Shoemark, Gilroy, V. Cogger, Neighbour and Mail.

Joe Kinnear, who broke his leg against Leeds in January, made his first appearance here at the ground at our last home match with Chelsea, and is looking forward to seeing the rest of our home matches.

A "rocker" has now been fixed to the bottom of his plaster to enable him to put his foot to the ground, and he has been told to try to manage without crutches.

Joe has been wearing a green and white football sock over the plaster. It was one he wore in his last international for Eire. We hope it will not be too long before he is again wearing the full strip.

Tony Want and John Craggs of Newcastle were members of the same England Youth team two seasons ago.

Roger Morgan has played five matches for Spurs . . . and each one has ended in a draw!



Newcastle United 1968-69. Back row, left to right: A. Burton, F. Clark, I. McFaul, J. McNamee, T. Gibb, D. Craig, W. Davies. Front row, left to right: J. Scott, J. Sinclair, B. Robson, D. Elliott, T. Robson (now Peterborough United). Photo by Provincial Press Agency, Southampton

MEN OF NEWCASTLE . . .

It is sixteen months to the day since Newcastle last played at White Hart Lane, and a lot of change can take place in the composition of a team in that period of time.

Four of our own players who were in the field that day are now with other clubs, namely Roger Hoy, Dave Mackay, Frank Saul and Cliff Jones, while Newcastle have also transferred four of the players who held us to a draw on 2nd December, 1967.

Gordon Marshall, who kept goal for Newcastle here last season, was transferred to Nottingham Forest in October, and in the following month left-winger Tommy Robson moved to Peterborough.

In January Jim Iley, who captained Newcastle last season, followed Robson to Peterborough, and at the end of February inside-forward Albert Bennett was transferred from Newcastle to Norwich City.

Ian McFaul is now the recognised first-choice goalkeeper for Newcastle. He was born at Coleraine, and has played for Northern Ireland. McFaul was signed from Linfield, the Irish League club, in November, 1966.

NURSERY PRODUCTS

Newcastle full-backs John Craggs and Frank Clark are both products of the club's nursery system. Craggs comes from County Durham, and developed through the Tynesiders' junior ranks. He made his League debut during 1966-67.

Clark can claim greater experience. He, too, comes from County Durham, and made his League debut in Newcastle's Second Division team in 1963-64.

Left-half Bob Moncur is another player who was snapped up by Newcastle as a youngster. A full Scottish international, Moncur is a Perth man who was sought by several big clubs both sides of the border before deciding to accept Newcastle's offer. He is a top-class golfer.

Centre-half Ollie Burton is a Welsh international. He comes from Chepstow, and started his career with Newport County. Norwich City secured Burton's transfer, and after a spell in East Anglia he moved to Newcastle in June, 1963.

NEWCOMER

Wing-half Tommy Gibb is a Newcastle newcomer this season. He was signed from Partick Thistle two days before the current season opened, and made his debut in Newcastle's first away match, on Sheffield Wednesday's ground last August.

Gibb, who joined Partick from Armdale Thistle in 1963, has played for the Scottish Under-23 team.

The best-known of Newcastle's forwards is striker Wyn Davies, the Welsh international, but he is at present serving a seven day suspension and will not be playing tonight.

Inside-forward Arthur Horsfield was signed by Newcastle from Middlesbrough as recently as January. He is a native of Newcastle, but developed in Middlesbrough's junior ranks.

Right-winger Jim Scott is another Newcastle forward who was secured in the transfer market. He was signed from Hibernian in August 1967, and is therefore, in his second season at St. James's Park.

Scott was born at Falkirk, and joined Hibs from the Bo'ness United club in 1958.

Bryan Robson, who is expected to appear in Newcastle's front line, is one of the club's own products. He was born at Sunderland, but lived most of his early years at Prudhoe.

Robson, another first-class golfer, signed as a professional for Newcastle at 17. He has played for the England Under-23 team.

Winger Alan Foggson is another of Newcastle's own products. He comes from County Durham, and developed in the junior ranks at St. James's Park, making his First Division debut last season.

Foggson is still young enough to play in Newcastle's youth team, and will be included in their party for the Rotterdam tournament next month in which our own Youth side will compete.

Jackie Sinclair is the former Leicester City outside-right. He was born in Dunfermline and played for the Dunfermline club before joining Leicester. Newcastle secured his transfer from Leicester in January, 1968.

MAN IN CHARGE

Referee for this evening is Mr. Dennis Turner, who is making his first appearance on this ground.

Mr. Turner, who comes from Rugeley in Staffordshire, is in his first season as a Football League referee.

He started refereeing at the age of 16, and qualified two years later. He graduated through the Staffordshire County League and West Midlands Regional League, and was appointed to the Football League Linesmen's list in season 1966-67.

Mr. Turner, who is 33, is a member of the Cannock Referees' Association. He is married with two daughters and his main hobbies are club cricket and gardening.

He is a qualified Mining Engineer, and holds a post as Safety Engineer at Lea Hall Colliery, one of the biggest and most modern collieries in the country.

His top refereeing appointment to date was earlier this season when he officiated in Malta in the European Cup.

DID YOU KNOW . . .

THAT the record gate at Newcastle stands at 68,586 for a League match with Chelsea in 1930?

THAT Newcastle have won the League championship on four occasions?

THAT Newcastle have won the F.A. Cup six times?

FORTHCOMING FIXTURES

Friday, 4th April, 1969

COVENTRY CITY

Football League, Division I

Kick-off 3 p.m.

Wednesday, 9th April, 1969

LONDON v. MANCHESTER

Inter-City Schools Challenge Match

Kick-off 7.30 p.m.

TRAVEL

British Rail will issue return tickets at 40s. (booked services only) to Birmingham (New Street Station) in connection with our away match at West Bromwich on Easter Monday.

Services suitable to connect with the 3 p.m. kick-off are as follows:

FORWARD

Euston dep. 11.15 12.15

Birmingham arr. 12.49 13.49

(New St.)

RETURN

Birmingham dep. 17.15 18.15

(New St.)

Euston arr. 18.55 19.55


All services provide refreshment facilities.

For this match Henry Coaches will operate a service at a return fare of 17s. Coaches will leave No. 1 Broad Lane, N.15 at 9.30 a.m. and Whitehall Street (opposite ground) at 9.45 a.m. For further information apply to Henry Coaches—Tel. Tottenham 0661.

In connection with our away match with Nottingham Forest on 12th April, the Forest club will consider postal applications for seats in their East Stand at 10s. each, although preference is given to those applying on the ground in person. Applications by post, enclosing stamped addressed envelope, should be sent direct to the Nottingham Forest Club, City Ground, Trent Bridge, Nottingham. Details of cheap travel facilities to Nottingham will appear in our match programme on Good Friday.

Newcastle's last win on this ground was by 2-1 on a Wednesday evening in March, 1961.

FOOTBALL LEAGUE, DIVISION I KICK-OFF 7.30 p.m.

TOTTENHAM HOTSPUR		
White Shirts, Blue Shorts		
RIGHT WING		LEFT WING
	1 JENNINGS	
2 EVANS		3 WANT
4 MULLERY (Capt.)	5 ENGLAND	6 COLLINS, P.
8 GREAVES		10 VENABLES
7 JOHNSON	9 GILZEAN	11 MORGAN
		
11 FOGGON	9 HORSFIELD	7 SINCLAIR
10 SCOTT		8 ROBSON
6 MONCUR (Capt.)	5 BURTON	4 GIBB
3 CLARK		2 CRAGGS
	1 McFAUL	
LEFT WING		RIGHT WING
NEWCASTLE UNITED		
Black and White Stripes, Black Shorts		

Referee: Mr. D. TURNER, Staffs.

Linesmen: Mr. R. G. SHEPPARD, Beds (Red Flag)

Mr. R. W. ROSELAND, Northants (Yellow Flag)

Substitutes: (Home Club) _____ (Visiting Club) _____

The Good Old Days?

An Agreement made this 1st day of May

1899, between James Hawley

of Tottenham, in the County of Middlesex, the Financial Secretary for and on behalf of

the TOTTENHAM HOTSPUR FOOTBALL CLUB of the one part, and

Leonard Joseph Hyde of 2 Alameda, Wellingborough

Professional Football Player, of the other part, whereby it is agreed by and between the

parties as follows:—

1. The said Leonard Joseph Hyde shall become a

playing member of the Tottenham Hotspur Football Club, from the date hereof until the

30th day of April, 1900, and shall be paid by the Club for his services the weekly salary

or remuneration of £2.10.0 during such time as he shall play for the Club, but

a weekly remuneration of £1.10.0 only shall be payable between the 1st day of

May and the 1st day of September, 1899.

Further that the sum of Ten Pounds

be paid by the Club aforesaid to the

said Leonard Joseph Hyde

on his signing the proper form

issued by the F.A.

2. The said Leonard Joseph Hyde shall conform

to the Rules and Regulations now or hereafter in force in relation to the duties of a

playing member of the Club, and shall subject himself to the control of the Officials of the

Club or any person having lawful or deputed authority.

3. If the said Leonard Joseph Hyde shall at any

time be guilty of insubordination to any person in authority or shall neglect to keep

himself sober and in good playing condition or render himself unfit to play by his own

misconduct, the Committee may forthwith, after the commission of such offence, either fine

or suspend the said Leonard Joseph Hyde for such time as

they think fit, during which time the payment of salary shall cease, or may discharge him

without notice or payment whatsoever.

As witness the hands of the parties.

Signed by the said

James Hawley and Leonard Joseph Hyde

in presence of Joseph Raby Leonard Joseph Hyde

See foot of opposite page for comments on above player's agreement.

Talking of Newcastle...

THIS evening's match is our 72nd against Newcastle in League football. A lot of games, a lot of goals and enough incident to fill a book.

It is fair to claim that in the course of those matches, starting in season 1909-10, some of the greatest players the game has known have paraded their skills.

The story of Spurs-Newcastle clashes is laced with the names of Peter McWilliam, Vivian Woodward, Bill McCracken, Arthur Grimsdell, Stan Seymour, Jimmy Dimmock, Hughie Gallacher, Jimmy Seed, Tony Leach and George Hunt. It threads on through Willie Hall, Jesse Carver, Ronnie Burgess, Jackie Milburn, George Robledo, Alf Ramsey, Danny Blanchflower, George Eastham and so to the star players of today.

No need to label these players with their clubs. Even the youngest student of football can surely separate the Spur from the "Geordie".

These, and others too numerous to mention, made tremendous impact on the soccer scene. Yet football is a team game, and each of these celebrated players was dependent on those around him.

TEAM-WORK

These columns skim only the surface of Spurs-Newcastle memories, but mention of team-work recalls that glittering 7-0 Spurs victory here in November, 1950.

Spurs, captained by Bill Nicholson, moved like a well-oiled machine, and the fact that Newcastle themselves contributed plenty of good football that day only underlines the level of skill reached by our players.

That figure 7 sticks a bit. Remember the following season? We were reigning champions, but Newcastle put seven in our net on Tyneside against a couple from Spurs.

A few weeks later we exacted a measure of revenge by beating Newcastle here 2-1 in the F.A. Charity Shield match. The outstanding memory was a brilliant goal from the lethal foot of Milburn.

Ted Ditchburn is well remembered at Newcastle. It was a ground on which our old goalkeeper usually excelled himself. Never did Ted play better than at St. James's Park in January, 1947. We lost 0-1, Len Shackleton scoring the goal, but Ditchburn's display was incredibly brilliant. Newcastle's crowd rose to him at the finish.

Then there was our 1953 visit to Newcastle. We won 3-1, and Ditchburn, again at his best, stopped a Milburn penalty.

WELLER'S GOAL

A never-to-be-forgotten visit from Newcastle was in the fourth round of the Cup in 1952. The gates were closed on 69,000 spectators, and thousands were shut out.

It was a great match. Newcastle won 3-0, George Robledo (2) and Bobby Mitchell scoring their goals.

Keith Weller, now with Millwall, is another former Spur with a happy Newcastle memory. He scored the only First Division goal of his career in a 2-2 draw against Newcastle here three seasons ago.

The older school of Spurs supporters will have plenty of pre-war memories. Newcastle's Cup visit in 1935 was an

continued on page 13

LEONARD HYDE

We are indebted to Mrs. May Griffiths, now living in Zambia, for the copy of her father's signing-on form reproduced on the opposite page.

Leonard Hyde was a winger with Spurs in the club's Southern League days, and Mrs. Griffiths also has in her possession a gold medal won by her father with Spurs in that competition.

Mrs. Griffiths has also sent a copy of the re-engagement agreement for the following season, 1900-01, and at this distance of time it is interesting to note that in his second season the player's salary was increased to £2 15s. 0d. per week during the playing season and to £2 per week between 1st May and 1st September.

Leonard Hyde was born in Birmingham in 1876, and also played for Grimsby Town, Bristol St. George's, Wellingborough and Brighton.

SPURS v. CHELSEA



Neil Johnson, whose late goal won the match for Spurs, harasses Chelsea's defence. Photo by Atkins Photos, Tottenham



A study in facial expressions following a corner to Spurs.

Picture by MONTE FRESKO—DAILY MIRROR

continued from page 11

exciting encounter. It was a fourth round tie that finished in a snowstorm. Spurs won 2-0, George Hunt snatching two late goals.

The most goals ever scored by a Spur in one match against Newcastle? The honour goes to Frank Osborne, who netted four in our 5-2 win here in 1928. Centre-forward Gallacher, who captained Newcastle, scored one of their goals from a penalty.

In the previous season Gallacher had given one of the finest performances ever seen from a visiting forward on this ground. In helping Newcastle to a 3-1 win he left our defence, including star players like Tommy Clay, Bert Smith and and Jack Elkes, bemused and bewildered that afternoon.

Here the reminiscence must stop... perhaps tonight's match will provide something equally memorable.

FOR THE RECORD

FRIDAY, 21ST MARCH
Crystal Palace Res. 1, Spurs Res. 3
(Football Combination)

Team: Hancock; Evans, Want; Pratt, T. Naylor, Bond; Cutbush, Bunkell, Perryman, Woolcott and Pitt.

Goalscorers: Woolcott, Perryman, Evans.

SATURDAY, 22ND MARCH
Spurs 1, Chelsea 0
(Football League, Division 1)

Team: Jennings; Beal, Knowles; Mullery, England, Collins, P.; Johnson, Greaves, Gilzean, Venables and Pearce.

Goalscorer: Johnson.

Spurs "A" 4, Wimbledon Res. 0
(Metropolitan League)

Team: Daines; Holder, P., Bish; Dillon, T. Naylor, Henry; Shoemark, Gilroy, V. Cogger, Neighbour and Mail.

Goalscorers: Mail, Dillon, Gilroy, V. Cogger.

MONDAY, 24TH MARCH
Arsenal 1, Spurs 0
(Football League, Division 1)

Team: Jennings; Evans, Want; Mullery, Pratt, Collins, P.; Pearce (sub. Jenkins), Greaves, Gilzean, Venables and Johnson.

WEDNESDAY, 26TH MARCH
Arsenal "A" 0, Spurs "A" 1
(Metropolitan League)

Team: Daines; Holder, P., Bish; Dillon, T. Naylor, Henry; Shoemark, Gilroy, V. Cogger, Neighbour and Pitt.

Goalscorer: Shoemark.

INTER-CITY

The Inter-City Schools Challenge match between London and Manchester will be played on this ground on Wednesday, 9th April, kick-off 7.30 p.m.

LAST SEASON

When Spurs and Newcastle met in the corresponding match last season, the line-up was as follows:

Spurs: Jennings; Kinnear, Knowles; Mullery, Hoy, Mackay; Saul, Greaves, Gilzean, Bond and Jones.

Newcastle: Marshall; Burton, Clark; Elliott, McNamee, Moncur; Scott, Bennett, Davies, Iley and Robson, T.

DEVELOPMENT SOCIETIES

DAILY DRAW. The results of the draw by the Spurs Development Society No. 1 for the week ended 22nd March (Week No. 23) were as follows:

	£10	£5	£3
Monday	4977	3601	4742
Tuesday	0553	1049	0222
Wednesday	0638	6978	0700
Thursday	8094	4643	6145
Friday	8029	3664	2686
Saturday	4215-£75		

Tickets, priced 1s. each, can be obtained from the Pools Office in the main entrance or through agents.

NEW AGENTS REQUIRED—RING 808 0281

"GOAL TIME". The following were the winning times in the competition held by the Development Society No. 2: Ipswich—18th March, 1969

1st Goal	12 min. 53 sec.	£50
2nd Goal	29 min. 42 sec.	£25
3rd Goal	40 min. 25 sec.	£10

Chelsea—22nd March, 1969

1st Goal	77 min. 17 sec.	£50
----------	-----------------	-----

The second prize of £25 and the third prize of £10 was shared equally between the holders of the three "No Goal" tickets.

These competitions are held on home First team matches only and tickets, priced 1s. each, can be obtained from the officially-appointed sellers.

ANSWERS TO QUIZ

1. Jim Iley, who is now player-manager to Peterborough United.
2. Spurs won the League championship, and Newcastle won the F.A. Cup.
3. Spurs were winning 2-0.
4. John McGrath of Southampton.
5. When Ireland lost 0-2 to England in the European Nations Cup in Belfast in 1966, Jennings started the game in the home goal, but McFaul, then with Linfield, replaced him as substitute.

FOOTBALL LEAGUE—DIVISION I

FIRST TEAM FIXTURES

Date	Opponents	Ground	For	Ag.
Wed. July 31	Glasgow Rangers (Friendly)	Home	3	1
Sat. Aug. 3	F.K. Austria (Friendly)	Away	2	2
Sat. " 10	Arsenal	Home	1	2
Sat. " 17	Everton	Away	2	0
Wed. " 21	West Bromwich Albion	Home	1	1
Sat. " 24	Sheffield Wednesday	Home	1	2
Wed. " 28	Manchester United	Away	1	3
Sat. " 31	Chelsea	Away	2	2
Wed. Sept. 4	Aston Villa (League Cup, 2nd Round)	Away	4	1
Sat. " 7	Burnley	Home	7	0
Sat. " 14	West Ham United	Away	2	2
Tues. " 17	Coventry City	Away	2	1
Sat. " 21	Nottingham Forest	Home	2	1
Wed. " 25	Exeter City (League Cup, 3rd Round)	Home	6	3
Sat. " 28	Newcastle United	Away	2	2
Sat. Oct. 5	Leicester City	Home	3	2
Wed. " 9	Manchester United	Home	2	2
Sat. " 12	Manchester City	Away	0	4
Wed. " 16	Peterborough Un. (League Cup, 4th Rd.)	Home	1	0
Sat. " 19	Liverpool	Home	2	1
Sat. " 26	Ipswich Town	Away	1	0
Wed. " 30	Southampton (League Cup, 5th Round)	Home	1	0
Sat. Nov. 2	Stoke City	Home	1	1
Sat. " 9	Leeds United	Away	0	0
Sat. " 16	(1) Sunderland	Home	5	1
Wed. " 20	Arsenal (League Cup, Semi-final, 1st Leg)	Away	0	1
Sat. " 23	Southampton	Away	1	2
Wed. Dec. 4	Arsenal (League Cup, Semi-final, 2nd Leg)	Home	1	1
Sat. " 7	(2) Wolverhampton Wanderers	Away	0	2
Sat. " 14	Manchester City	Home	1	1
Sat. " 21	Liverpool	Away	0	1
1969				
Sat. Jan. 4	Walsall (F.A. Cup, 3rd Round)	Away	1	0
Sat. " 11	Stoke City	Away	1	1
Sat. " 18	Leeds United	Home	0	0
Sat. " 25	Wolverhampton W. (F.A. Cup, 4th Rd.)	Home	2	1
Wed. " 29	Queen's Park Rangers	Home	3	2
Sat. Feb. 1	Sunderland	Away	0	0
Wed. " 12	Aston Villa (F.A. Cup, 5th Rd.)	Home	3	2
Sat. " 15	Queen's Park Rangers	Away	1	1
Sat. " 22	Wolverhampton Wanderers	Home	1	1
Sat. Mar. 1	Manchester City (F.A. Cup, 6th Rd.)	Away	0	1
Sat. " 8	Everton	Home	1	1
Tues. " 18	Ipswich Town	Home	2	2
Sat. " 22	(S.F.) Chelsea	Home	1	0
Mon. " 24	Arsenal	Away	0	1
Sat. " 29	Burnley	Away	2	2
Wed. Apr. 2	Newcastle United	Home	0	1
Fri. " 4	Coventry City	Home	2	0
Mon. " 7	West Bromwich Albion	Away	3	4
Sat. " 12	Nottingham Forest	Away	2	0
Sat. " 19	West Ham United	Home	1	0
Tues. " 22	Southampton	Home	2	1
Sat. " 26	F.A. Cup Final			
Tues. " 29	Leicester City	Away	0	1
	Sheffield Wednesday	Away	0	0

© Copyright The Football League Limited 1968

FOOTBALL COMBINATION

RESERVE TEAM FIXTURES

Date	Opponents	Ground	For	Ag.
Sat. Oct. 26	Luton Town	Home	8	0
Mon. " 28	Enfield (Lon. Challenge Cup, Semi-final)	Home	3	1
Sat. Nov. 2	Southampton	Away	1	0
Sat. " 9	Oxford United	Home	5	0
Mon. " 18	West Ham U. (Lon. Challenge Cup, Final)	Home	2	2
Sat. " 23	Cardiff City	Home	3	0
Sat. " 30	Fulham	Away	0	2
Sat. Dec. 7	Northampton Town	Home	2	0
Wed. " 11	*Southampton (Semi-final, 1st Leg)	Away	0	2
Sat. " 14	Queen's Park Rangers	Away	1	0
Mon. " 16	West Ham U. (Lon. Chal. Cup Final, Replay)	Away	2	3
Sat. " 21	Reading	Home	4	1
1969				
Sat. Jan. 4	Plymouth Argyle	Home	5	0
Sat. " 11	Bristol Rovers	Home	2	1
Tues. " 14	Ipswich Town	Away	1	6
Sat. " 25	Chelsea	Away	1	5
Sat. Feb. 1	Swansea Town	Home	1	1
Wed. " 26	*Southampton (Semi-final, 2nd Leg)	Home	3	3
Sat. Mar. 1	Peterborough United	Home	4	4
Sat. " 8	West Ham United	Away	2	2
Sat. " 15	Bournemouth & B.A.	Home	6	0
Fri. " 21	Crystal Palace	Away	3	1
Sat. " 29	Arsenal	Home	0	1
Tues. Apr. 1	Birmingham City	Away		
Tues. " 8	Walsall	Away		
Sat. " 12	Swindon Town	Home		
Thur. " 17	Norwich City	Away		

© Copyright The Football League Limited 1968

* Combination Cup

'A' TEAM — METROPOLITAN LEAGUE

Date	Opponents	Ground	For	Ag.
1969				
Sat. Jan. 11	Stevenage Athletic	Home	1	1
Sat. Feb. 1	Bletchley	Away	0	3
Sat. " 15	†Wellingborough Town (2nd Round)	Away	2	0
Sat. Mar. 1	†West Ham United (2nd Round)	Home	1	2
Sat. " 8	*Chelmsford City (Semi-final, 1st Leg)	Away	2	0
Sat. " 15	*Chelmsford City (Semi-final, 2nd Leg)	Home	3	1
Sat. " 22	Wimbledon	Home	4	0
Wed. " 26	Arsenal	Away	1	0
Fri. " 28	Chelmsford City	Away	1	1
Tues. Apr. 1	Braintree & Crittall Athletic	Away		
Sat. " 5	†Bletchley (Semi-final)	Away		
Mon. " 7	Cray Wanderers	Away		
Sat. " 12	Metropolitan Police	Home		
Sat. " 19	Bury Town	Away		
Sat. " 26	Cray Wanderers	Home		
Wed. " 30	Bletchley	Home		
Sat. May 3	Stevenage Athletic	Away		
	Hatfield Town	Away		
	Braintree & Crittall Athletic	Home		

* Autumn Shield

† Professional Cup

† Challenge Cup