

# FINAL LEAGUE TABLES—SEASON 1968-69

## FOOTBALL LEAGUE

## FOOTBALL COMBINATION

### DIVISION I

	P.	W.	D.	L.	F.	A.	Ps.
Leeds United	42	27	13	2	66	26	67
Liverpool	42	25	11	6	63	24	61
Everton	42	21	15	6	77	36	57
Arsenal	42	22	12	8	56	27	56
Chelsea	42	20	10	12	73	53	50
<b>Tottenham H.</b>	<b>42</b>	<b>14</b>	<b>17</b>	<b>11</b>	<b>61</b>	<b>51</b>	<b>45</b>
Southampton	42	16	13	13	57	48	45
West Ham Un.	42	13	18	11	66	50	44
Newcastle Un.	42	15	14	13	61	55	44
West Bromwich	42	16	11	15	64	67	43
Manchester Un.	42	15	12	15	57	53	42
Ipswich Town	42	15	11	16	59	60	41
Manchester City	42	15	10	17	64	55	40
Burnley	42	15	9	18	55	82	39
Sheffield Wed.	42	10	16	16	41	54	36
Wolverhampton	42	10	15	17	41	58	35
Sunderland	42	11	12	19	43	67	34
Nottingham F.	42	10	13	19	45	57	33
Stoke City	42	9	15	18	40	63	33
Coventry City	42	10	11	21	46	64	31
Leicester City	42	9	12	21	39	68	30
Queen's Park R.	42	4	10	28	39	95	18

### Goals

	P.	W.	D.	L.	F.	A.	Ps.
Arsenal	25	20	4	1	71	18	44
Fulham	25	18	4	3	76	32	40
<b>Tottenham Hotspur</b>	<b>25</b>	<b>17</b>	<b>3</b>	<b>5</b>	<b>69</b>	<b>26</b>	<b>37</b>
Ipswich Town	25	16	5	4	65	33	37
Crystal Palace	25	16	3	6	47	31	35
West Ham United	25	9	13	3	42	28	31
Southampton	25	11	6	8	37	21	28
Gillingham	25	11	6	8	30	30	28
Bristol City	25	12	3	10	44	36	27
Walsall	25	9	6	10	41	38	24
Leicester City	25	9	6	10	35	37	24
Peterborough Un.	25	7	10	8	32	36	24
Cardiff City	25	9	6	10	35	37	24
Queen's Park R.	25	8	7	10	39	45	23
Chelsea	25	9	4	12	43	43	22
Bournemouth & B.	25	6	9	10	33	46	21
Plymouth Argyle	25	6	9	10	23	37	21
Bristol Rovers	25	8	5	12	39	54	21
Birmingham City	25	7	6	12	36	37	20
Norwich City	25	6	8	11	41	51	20
Swansea Town	25	7	6	12	38	49	20
Luton Town	25	5	10	10	28	51	20
Oxford United	25	7	4	14	26	52	18
Swindon Town	25	6	4	15	17	41	16
Northampton Town	25	5	3	17	27	59	13
Reading	25	4	4	17	24	65	12

## METROPOLITAN LEAGUE

## SOUTH-EAST COUNTIES

### Goals

	P.	W.	D.	L.	F.	A.	Ps.
Bury Town	30	20	3	7	55	23	43
<b>Tottenham H.</b>	<b>30</b>	<b>17</b>	<b>8</b>	<b>5</b>	<b>68</b>	<b>38</b>	<b>42</b>
Bletchley	30	16	6	8	47	25	38
Met. Police	30	16	5	9	72	52	37
Braintree & Critt.	30	12	11	7	36	26	35
West Ham Un.	30	14	6	10	50	41	34
Wellingborough	30	15	3	12	57	49	33
Chelmsford City	30	11	9	10	56	45	31
Stevenage Ath.	30	11	9	10	50	44	31
Romford	30	11	9	10	59	60	31
Sheppey United	30	12	7	11	53	54	31
Cray Wanderers	30	11	5	14	49	49	27
Arsenal	30	9	4	17	34	59	22
Hatfield Town	30	4	9	17	37	65	17
Wimbledon	30	6	3	21	30	70	15
Bedford Town	30	5	3	22	28	81	13

### DIVISION I

### Goals

	P.	W.	D.	L.	F.	A.	Ps.
Millwall	32	26	4	2	126	35	56
Ipswich Town	32	24	7	1	98	30	55
Orient	32	24	7	1	96	36	55
Charlton Athletic	32	20	7	5	81	40	47
Queen's Park R.	32	16	5	11	72	53	37
Crystal Palace	32	17	3	12	77	68	37
<b>Tottenham H.</b>	<b>32</b>	<b>14</b>	<b>4</b>	<b>14</b>	<b>82</b>	<b>47</b>	<b>32</b>
Chelsea	32	13	4	15	79	45	30
West Ham Un.	32	11	8	13	58	67	30
Fulham	32	10	5	17	40	57	25
Colchester Un.	32	11	3	18	52	98	25
Luton Town	32	7	9	16	49	68	23
Gillingham	32	9	4	19	36	71	22
Reading	32	8	6	18	45	96	22
Watford	32	9	3	20	44	92	21
Brighton & Hove	32	7	4	21	50	84	18
Oxford United	32	2	5	25	18	96	9



## FOOTBALL LEAGUE—DIVISION ONE

# TOTTENHAM HOTSPUR 4

v.

# BURNLEY 0

## Official Programme

Price SIXPENCE



SEASON 1969-70

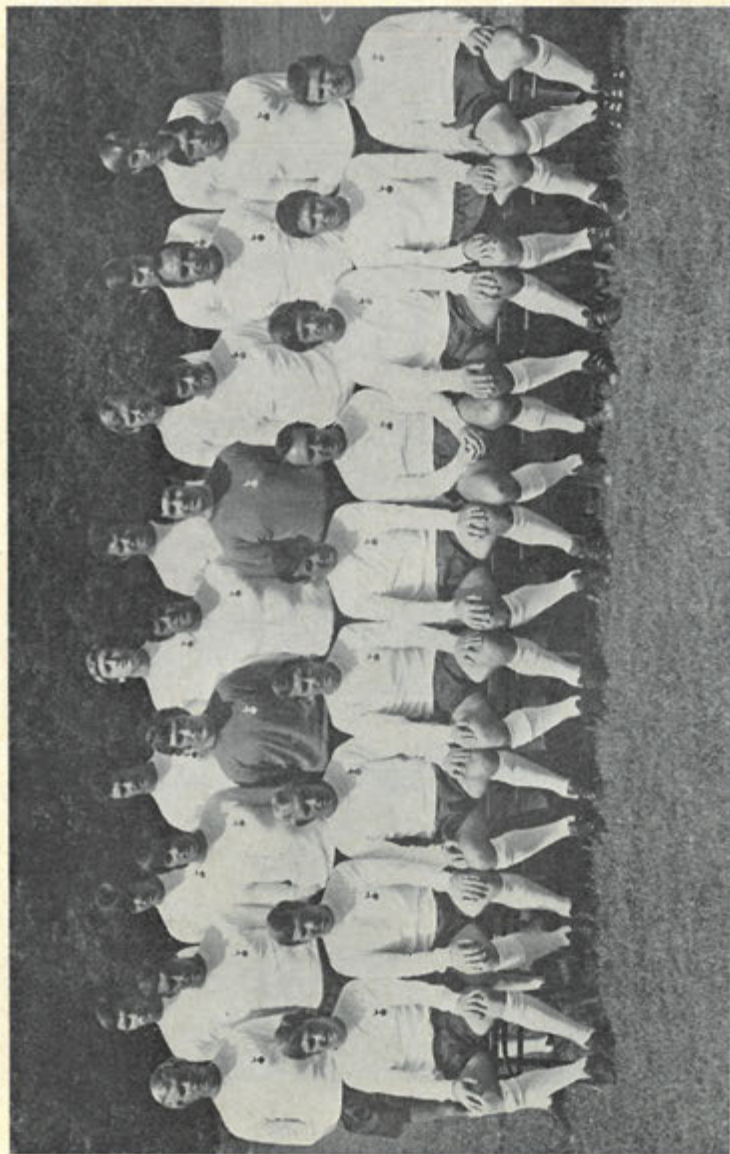
Vol. 62

No. 2

Wednesday, 13th Aug., 1969

KICK-OFF 7.30 p.m.





**TOTTENHAM HOTSPUR F.C., 1969-70**

Back row, left to right: John Pratt, Joe Kinnear, Jimmy Pearce, Terry Naylor, David Jenkins, Ray Bunkell, John Collins, John Cutbush, Centre row, left to right: Philip Beal, Martin Chivers, Peter Collins, Pat Jennings, Mike England, Ken Hancock, Cyril Knowles, Alan Gilzean, Ray Evans. Front row, left to right: Jimmy Neighbour, Dennis Bond, Tony Want, Neil Johnson, Alan Mullery (Capt.), Jimmy Greaves, Roger Morgan, Steve Perryman, Philip Holder. Photo by Owen Barnes, Stanmore

# TOTTENHAM HOTSPUR

## FOOTBALL AND ATHLETIC COMPANY LIMITED

Chairman: FREDK. WALE Vice-Chairman: S. A. WALE

Directors: C. F. COX, A. RICHARDSON, H. G. S. GROVES

Manager: W. E. NICHOLSON Secretary: G. W. JONES Medical Officer: Dr. BRIAN CURTIN

League Champions: 1950-51, 1960-61 F.A. Cup Winners: 1901, 1921, 1961, 1962, 1967

Winners of European Cup Winners Cup: 1963

COPYRIGHT

ALL RIGHTS RESERVED

## COMMENT

This evening, on the occasion of our first home match of the new season, we extend a hearty welcome to all our supporters, and to the officials, players and followers of Burnley, our opponents.

In recent years the close-season period has shortened, and it seems but a short time since our final League match of last season on Sheffield Wednesday's ground in May.

For the players, management and training staff, the break from football has been extremely brief. Two days after that last match at Sheffield, the team left for the United States and Canada, and were not back until 4th June.

With the current League season opening as early as last Saturday, it was necessary to recall the playing staff before mid-July, and the First Team has, of course, already fulfilled the opening League fixture, away to Leeds United on Saturday, and the two full-scale pre-season friendly matches, away to Hearts and Glasgow Rangers.

Moreover, three of our key players have already had a taste of top-level representative football. Pat Jennings and Alan Mullery were both in the Rest of the United Kingdom team against the Welsh side that included Mike England in the Investiture Celebration Match at Cardiff last month.

### OPTIMISM

Last season our opening League match ended in defeat at home, and we hardly

need say that we are anxious to improve on that performance tonight.

Optimism is, of course, the keynote in the early weeks of a new season, and we know Burnley will tackle us in determined mood. Our Lancashire opponents will need no reminding that we defeated them by seven clear goals on this ground last season, and we cannot expect to catch them in such a generous mood tonight.

Burnley provided us with our first home League win last season. We wish our Lancashire friends no harm, but we hope for a repeat performance this evening.

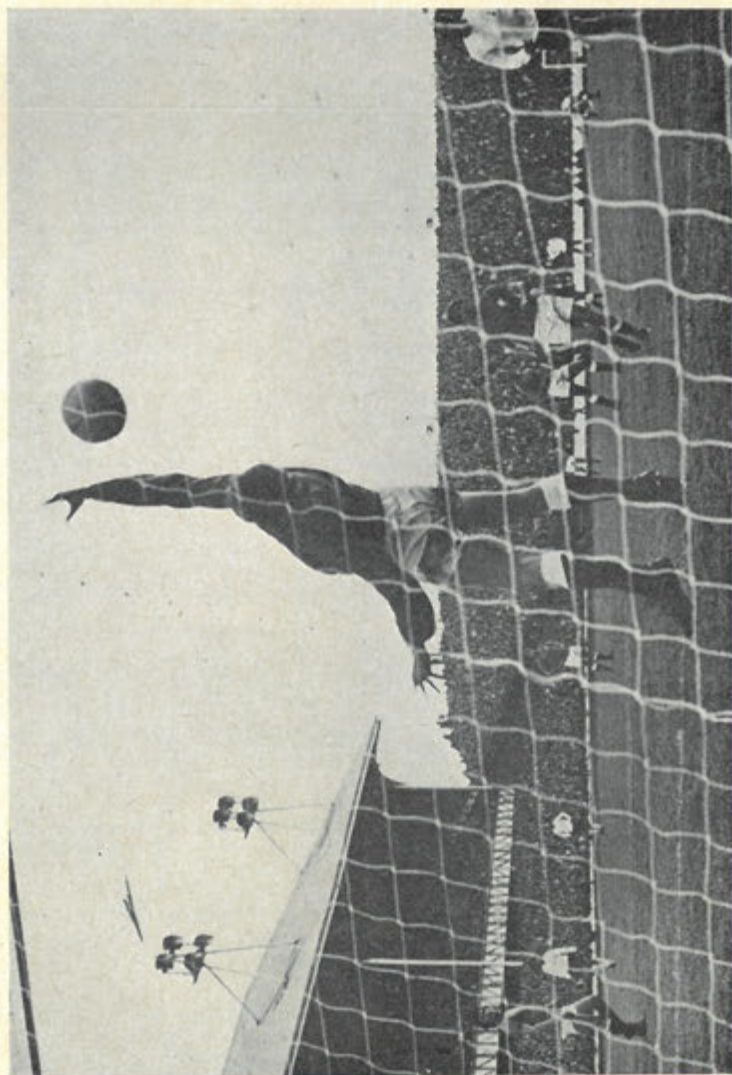
Burnley made an encouraging start to the season by holding promoted Derby County to a goalless draw at the Baseball Ground on Saturday.

Last season Burnley finished in 14th position in the First Division, and were knocked-out in the Fourth Round of the F.A. Cup 2-1 by Liverpool.

### LEAGUE MATCH BOOKINGS

Bookings for reserved seats price 13s. 0d. will open 21 days before each League match. Applications should be addressed to the Ticket Office Manager, and must be accompanied by a stamped addressed envelope.





Glasgow Rangers v. Spurs. This lob by Jimmy Pearce gave Spurs victory over Rangers in the pre-season match in Glasgow.

Photo by "Scottish Daily Express"

## MAN IN CHARGE

Referee for tonight is Mr. Eric Jennings of Stourbridge, who has been on the League List for 18 years, 16 as a referee.

At one time he played as a goalkeeper in amateur football in the Birmingham area, but decided to take up refereeing while serving as a flight-sergeant gunner in the Royal Air Force.

Mr. Jennings, who is on the F.I.F.A. panel, has controlled plenty of big matches. He refereed the Amateur Cup Final between Enfield and Skelmersdale United three seasons ago, and has also officiated at international level abroad.

Referee Jennings, who was a linesman in the 1958 F.A. Cup Final between Bolton Wanderers and Manchester United, graduated to League level via the Birmingham League and the Worcestershire Combination.

Married, with two grown-up daughters, Mr. Jennings is employed as a technical representative by a London firm of water specialists. He is a keen club cricketer.

As he reaches the age limit for League referees early next year, this will be his last season.

## YOUTH MANAGER

During the close season, Mr. Pat Welton was appointed Youth Team Manager and Coach. The development of young players is a vital function to every club, and Pat's is an important and responsible post.

For several years Pat was manager of the England Youth team, and prior to joining us in a full-time capacity he was Physical Education Instructor at Forest School, Snaresbrook.

An Eltham man by birth, Pat spent his League playing career as a goalkeeper with Orient and Queen's Park Rangers. He made his League debut with Orient in 1949-50, and was ever-present in the Leyton team that won promotion to the Second Division in season 1955-56.

## DEPARTURES

The name of Ron Henry, who served us so loyally and so well over so many years, is missing from our list of players this season.



Time catches up with every player, and Ron, who captained the "A" team in the Metropolitan League last season, played his last match in a Spurs shirt at Hatfield in May.

Ron made his League debut for Spurs at Huddersfield in April, 1955, and in all made close on 300 League and Cup appearances for the Club. He was, of course, the last survivor of our "double-winning" team of 1961.

Happily, Henry will continue to serve the club. He will be assisting with the coaching of schoolboy and young players two evenings each week.

As our supporters will be aware, Terry Venables was transferred to Queen's Park Rangers in June.

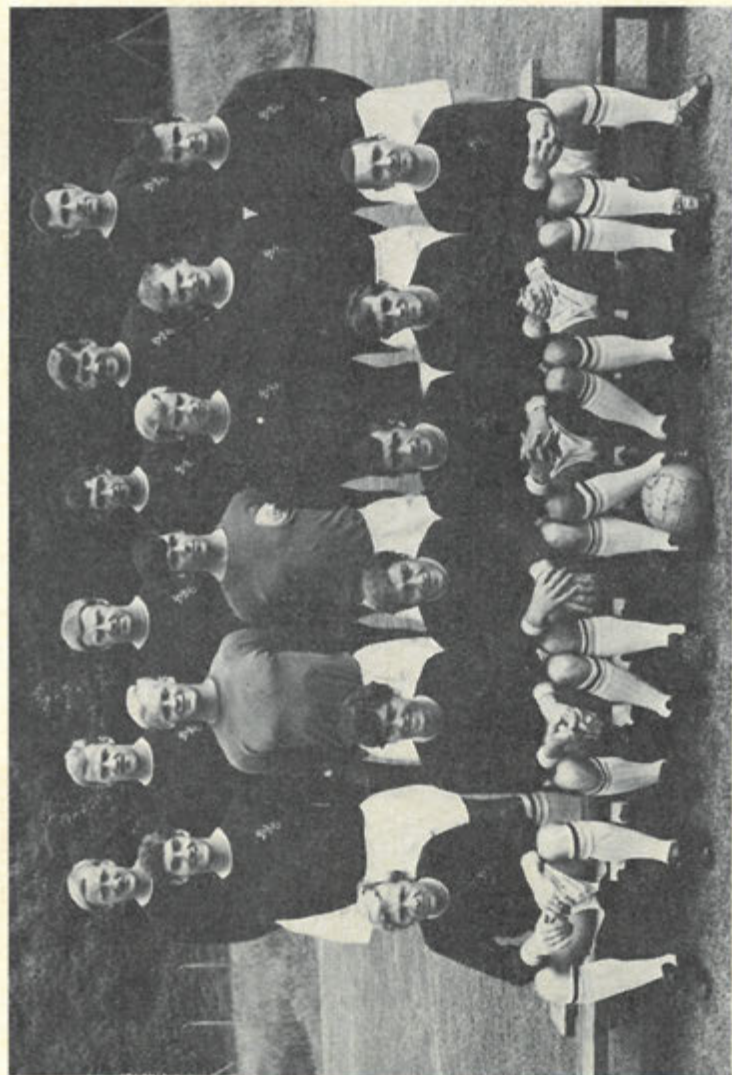
Venables joined us from Chelsea in May, 1966, and made his League debut for Spurs at Blackburn in the final match of that season. A member of our F.A. Cup-winning team of 1967, he made 140 League and Cup appearances for Spurs, and played three times as substitute. He scored nine goals in League and Cup.

We wish Terry every success with Rangers, and will watch his progress with interest.

## QUIZ FOR TONIGHT—Answers on page 13

1. Who scored the goals in the F.A. Cup-final between Spurs and Burnley in 1962?
2. Can you name the former Burnley player who later managed the Lancashire club, and is now in charge of another First Division club?
3. How many of Spurs' seven goals against Burnley on this ground last season were scored in the first half?
4. A former Burnley player is now in his first season of management with a Lancashire Second Division Club. Who is he?
5. In which season was Jimmy Greaves missing from Spurs' team owing to illness from November to February?





**Burnley, 1969-70.** Back row, left to right: S. Todd, J. Thomson, D. Merrington, F. Smith, L. Lachman, J. Angus. Centre row, left to right: M. Dobson, P. J. Mellor, R. Jones, C. Waldron, C. Blant. Front row, left to right: D. Collins, D. Thomas, R. Coates, F. Casper, A. Bellamy, B. O'Neil.

Photo by Provincial Press Agency, Southampton

## TONIGHT'S VISITORS

BURNLEY have a reputation second to none among First Division clubs for finding and developing their own players.

Burnley use the transfer market when need arises, but the frequency with which the Lancashire club introduces young players of quality reflects considerable credit on the nursery system at Turf Moor.

Most of the players expected to wear Burnley's colours this evening have come off their own assembly line. This certainly applies to full-backs **Les Latcham** and **Fred Smith**.

Latcham was born at Stanley in the North-east, and joined Burnley straight from school. He made his debut in the outside-left position, but has since settled down well in a defensive role.

Smith comes from West Sleafburn in Northumberland, and he also joined Burnley as a youngster. He signed as a professional in 1959, and was 20 when he made his League debut against Stoke City in 1963.

### NURSERY PRODUCT

**Martin Dobson**, another of Burnley's nursery products, may fill a half-back position this evening. He has been a full professional only since August, 1967, and made his League debut two seasons ago.

Wing-half **Sammy Todd** is a full Irish international. He comes from Belfast, and was formerly on the books of Glentoran, the Irish League club. Todd made his debut for Burnley against Spurs at Turf Moor in April, 1964.

Burnley defenders who were secured from other clubs in the Football League are goalkeeper **Rodney Jones** and centre-half **Colin Waldron**. Jones joined Rotherham United from Ashton United, the Cheshire League club, and made the further move to Burnley in March, 1967.

Waldron made his name in League football with Bury, who transferred him to Chelsea in July, 1967. His stay at Stamford Bridge was brief, Burnley stepping in for his transfer in the following October. Waldron is a Bristol man.

### DOCHERTY'S SON

Midfield player **Brian O'Neil** comes from Bedlington in Northumberland,

and was only 19 when he made his Burnley debut in 1963. Wing-half **Michael Docherty**, son of Aston Villa manager Tommy Docherty, made his League debut last season, while **Eric Probert**, who scored against Spurs at Burnley last March, is another player with only a few League appearances to his credit.

A close eye will have to be kept on centre-forward **Frank Casper**, who has finished top goalscorer for the club in each of the last two seasons. His total of goals last season was 21.

Casper is another of the few players signed by Burnley from other League clubs. He was secured from Rotherham in June, 1967. He is a Yorkshireman from Barnsley.

If **Doug Collins**, another Burnley import, is on show tonight he will be making his first appearance here for the Lancashire club.

Left-winger Collins joined Burnley from Grimsby Town shortly after the corresponding match last season. The step from Fourth to First Division is not easy for any player, but it proved well within the capacity of Collins.

Rotherham spotted Collins when he was playing for Pinxton Miners' Welfare in the Mansfield Youth League, and he spent a year with the Yorkshire club as an amateur. Rotherham wanted to keep him as an apprentice, but Collins preferred to accept a full-time professional offer from Grimsby.

### TEENAGER

Winger **David Thomas** is a teenager who played in both matches against Spurs last season. It was only last season that Thomas fully established himself as a senior Burnley player, and a lot is expected of him in the future. He is a former apprentice professional, who has been on full pro. forms since October, 1967.

**Ralph Coates**, who also played in both matches against us last season, is an England Under-23 forward. He is another of Burnley's North-eastern discoveries, and has something in common with Burnley manager Harry Potts.



They both come from Hetton-le-Hole in County Durham.

Coates made his League debut for Burnley against Sheffield United in 1964.

A place in the Burnley team may be found for **Jim Thomson**, who was signed from Chelsea at the end of last September.

Thomson, a half or full-back, is a Scot from Glasgow. He joined Chelsea from Provenside Hibs in January, 1965, and made his League debut for our West London rivals in a home match against Blackburn Rovers in May, 1966.

Goalkeeper **Peter Mellor** was signed from Witton Albion as recently as last April. In contrast, full-back **John Angus** is the longest-serving player on Burnley's books. He made his debut as a 17-year-old in 1956.

Angus comes from Amble in Northumberland, and is a full English international. He was in the Burnley team beaten by Spurs in the F.A. Cup Final of 1962.

Mellor had the bad luck to injure a finger at Derby on Saturday.

**Steve Kindon**, a forward, was introduced to Burnley's League team last August. He developed through the youth ranks, and is still a teenager.

Burnley fielded the following team in the corresponding match last season: Thomson; Angus, Latcham; O'Neil, Waldron, Merrington; Coates, Lochhead, Casper, Bellamy and Thomas. Harry Thomson was transferred to Blackpool last month.

Burnley have won only once in the course of their last 13 League visits to this ground. That was by 1-0 in our final home match of season 1965-66.

## NEW PRO.

Terry Naylor, who played regularly as an amateur in our "A" team half-back



Terry Naylor

We wish him a successful career in our colours.

This season we have four new apprentice professionals in Graeme Souness (inside-forward or wing-half), Tommy Dillon (inside-forward), David Staines (centre-forward) and Vic Appleyard (inside-forward or winger).

Souness is a Scot from Edinburgh, who was in the Scottish Boys team against England on this ground in March of last year. Last season he played mainly in our South East Counties League, Div. 1 side.

Tommy Dillon is the younger brother of Michael Dillon, who signed for us as an apprentice a year earlier. Tommy was born in Islington, and played for Islington Boys.

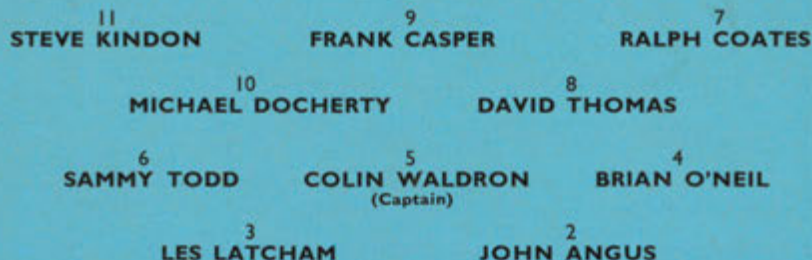
Staines was born at Poplar, and is a former member of the East London Boys team. Before signing apprentice forms he was employed in a printing works.

Appleyard left school in Welwyn Garden City only last month. He has played for Mid-Herts and District, and the Hertfordshire County Boys teams.

## FOOTBALL LEAGUE, DIVISION I KICK-OFF 7.30 p.m.

### TOTTENHAM HOTSPUR

White Shirts, Blue Shorts



1 PETER MELLOR

### BURNLEY

Claret and Blue Shirts, White Shorts

## FORTHCOMING FIXTURES

Saturday, 16th August, 1969

### LIVERPOOL

Football League, Division I

Kick-off 3 p.m.

Saturday, 23rd August, 1969

### BRISTOL CITY RESERVES

Football Combination

Kick-off 3 p.m.

Referee: **Mr. E. T. JENNINGS**, Worcs.

Linesmen: **Mr. D. G. MARTIN**, Beds (Red Flag)

**Mr. I. J. MILLER**, Wilts (Yellow Flag)

Substitutes: (Home Club)..... (Visiting Club).....





## DEVELOPMENT SOCIETIES

# DAILY DRAW PRIZES £190 WEEKLY

**AGENTS REQUIRED** for our expanding scheme. If you are over 21, why not contact our Pools Organiser, Mr. Ron Clarke, who will be pleased to supply full details. Whilst doing a worthwhile job for the Club, you can obtain for yourself the following benefits:

- ★ Commission on Sales
- ★ Special Prizes every week
- ★ Ground admission concessions

All enquiries to the Pools Office:

Spurs Development Society, 748 High Road, Tottenham, N.17  
or RING 808-0281

### RESULTS: WEEK 43 — 4th to 9th August, 1969

	Mon.	Tues.	Wed.	Thurs.	Fri.
£10 . .	0310	9876	3856	8724	2544
£5 . .	6779	4485	8329	4865	3115
£3 . .	4238	6684	0791	5672	9953

Saturday: £75 5246      £15 2859      £10 8710

Tickets, priced 1s. each, can be obtained from the Pools Office in the main entrance or through agents.

## ★ GOAL TIME ★

At all home First Team matches you can win:

**£50** (1st Prize)      **£25** (2nd Prize)      **£10** (3rd Prize)

Tickets, priced one shilling each, can be obtained from the officially-appointed sellers in the main entrance and at various positions throughout the ground.

## DISAPPOINTING

### Leeds United 3, Spurs 1

Our defeat at Leeds on Saturday was disappointing in the sense that we played well enough to have picked up a point if only the slightest measure of luck had come our way.

We acknowledge fully that Leeds are a fine side, and it would probably be fair to say that they were the better team on the day. At the same time two of their goals were of the kind that make a mockery of all our pre-match planning.

The first Leeds goal, in the 15th minute by Billy Bremner, was a brilliant effort, and we offer no complaint about that. The second, in the 57th minute, was altogether different.

Peter Collins tried to head the ball back to Pat Jennings, but the alert Alan Clarke managed to connect with it first. Admittedly, the ball bounced awkwardly, but the irretrievable outcome was a 2-0 lead for Leeds.

### BEST GOAL

Five minutes were left on the clock when Jimmy Greaves wormed his way through the Leeds defence to create his own space to place the ball in the net. It was a splendid goal, and we cannot be accused of bias in rating it the best produced by the match.

As shots by Greaves and Roger Morgan also hit the post, and Martin Chivers thumped one against the angle, it is clear that things may well have ended differently.



Roger Morgan

The third Leeds goal, netted in the last minute by Johnny Giles after Collins was adjudged to have handled in the penalty area, gave the home team a flattering margin of victory.

It was the first time we had conceded as many as three goals in our first League match of the season since Blackpool won here by 3-2 on the opening day of 1958-59.

SPURS: Jennings; Beal, Knowles; Mullery, England, Collins, P.; Want, Greaves, Chivers, Gilzean and Morgan.

Attendance: 35,804.

## LATE WINNER

### Spurs Res. 1, Fulham Res. 0

The Reserves won their opening match at home to Fulham last Saturday, but less than a minute remained for play



Neil Johnson

when Neil Johnson scored the goal that secured the points.

Neil started the move with a typical dash upfield, and after Fulham's defenders had failed to clear from his cross, he ran in to hammer the loose ball.

Spurs deserved to win, but inability to finish off moves built up from midfield left the issue open until that last vital minute.

Not that Spurs enjoyed any luck. Fulham were on the defensive for a lot of the second half, and on one occasion scrambled the ball away when a goal seemed certain.

A fine shot by Dennis Bond was deflected by David Jenkins into the net off a post, but the latter was given offside. That was in the 75th minute, and seconds before Johnson's winner, Bond had a hard shot beaten down.

Although Fulham are now a Third Division club, they fielded six players — Brian Williamson, Mike Pentecost, Wilf Tranter, Steve Earle, Frank Large and Les Barrett—who have played in First Division football.

Team: Hancock; Cutbush, Holder; Pratt, Evans, Naylor; Johnson, Bond, Jenkins, Perryman and Neighbour.

### NEW STRIP

Supporters who travelled to Leeds on Saturday must have been surprised to see the team turn out in yellow shirts with a blue cockerel emblem.

As Leeds wear white we were forced to change. Our change strip in recent years has been navy blue shirts, but this colour has now been banned by the League as it clashes with the referee's outfit.

In addition to ourselves and Leeds, the only other First Division club sporting white shirts is Derby County.





An unusual training shot of goalkeepers Pat Jennings and Ken Hancock.

Photo by Sport & General Press Agency Ltd.

## GOOD PROGRESS

Joe Kinnear is making good progress after breaking his right leg against Leeds last January, but is not yet back in full training. He is due to see a specialist early next month.

Joe has trained during the close season, and plenty of tennis, plus a week on a health farm at Shenley in company with Dave Mackay, our former skipper, have helped towards his recovery.

Joe accompanied Dave and his family on holiday to Alicante for a fortnight.

*A thorough overhaul of the playing pitch has taken place during the close season. Drainage deficiencies were apparent last season, and within hours of the final match, the task of installing a completely new system was put into operation.*

Bobby Steel, who joined Spurs in 1908, and captained the team before the first world war, celebrated his 81st birthday during the close season. He lives at Winchmore Hill, and we are glad to hear he is well in health. Congratulations Bob.

Burnley have failed to score on each of their last three visits to this ground.

*Terry Shanahan, who was on our apprentice staff last season, has joined Ipswich.*

Terry Medwin, our former winger, has returned to London football as Fulham's trainer-coach. Last season he was with Cardiff City.

This is not the first occasion Burnley have provided the opposition for our opening home match. They beat us here 1-0 on the opening day of season 1955-56, Brian Pilkington scoring the goal.

## GEORGE FOREMAN

It was with the deepest regret that we learned of the death in June of George Foreman, who was our regular centre-forward in the early days after the war. George made his name with West Ham United before the war, and his first association with Spurs was as a "guest" player in regional war-time football. Early in 1946 his transfer was secured from West Ham.

## HANDBOOK

The Club Handbook for 1969-70 is now on sale, and can be purchased on the ground this evening, price 2s. or by post 2s. 6d. In addition to the usual wealth of information, the Handbook includes a Foreword by the Chairman, Mr. Fredk. Wale, and a photographic section covering the whole of last season. In all, the Handbook includes 23 full-page illustrations in addition to a mass of interesting data on the Club and individual players.

## NEW COLOURS

Of the players released by the club on free transfers at the end of last season, winger Steve Pitt is now with Colchester United, and Billy Mail, also a winger, is trying his luck in South African football with Germiston Callies.

At Colchester Pitt has renewed association with our former left-winger Terry Dyson, who now combines coaching with playing duties for the Essex club.

In joining a South African club, Mail has followed in the path of other ex-Spurs in Peter Baker and Tony Smith.

## FOR THE RECORD

### PRE-SEASON FRIENDLIES

SATURDAY, 26TH JULY  
St. Albans City 2, Spurs Res. 2

Team: Hancock; Evans, Cutbush; Pratt, Collins, P., Naylor; Jenkins (sub. Holder), Bond, Chivers, Want and Neighbour.

Goalscorers: Opponent own goal, Pratt.

SATURDAY, 2ND AUGUST  
Hearts 1, Spurs 1

Team: Jennings; Beal (sub. Want), Knowles; Mullery, England, Collins, P.; Johnson (sub. Gilzean), Greaves, Chivers, Pearce and Morgan.

Goalscorer: Morgan.

MONDAY, 4TH AUGUST  
Glasgow Rangers 0, Spurs 1

Team: Jennings; Want, Knowles; Mullery, England, Beal; Gilzean, Greaves, Chivers, Pearce (sub. Pratt) and Morgan.

Goalscorer: Pearce.

## ANSWERS TO QUIZ

1. Jimmy Greaves, Bobby Smith and Danny Blanchflower for Spurs, and Jimmy Robson for Burnley.
2. Mr. Alan Brown, manager of Sunderland.
3. Four.
4. Mr. Les Shannon of Blackpool.
5. Season 1965-66.



# FOOTBALL LEAGUE—DIVISION I

## FIRST TEAM FIXTURES

Date	Opponents	Ground	For	Ag.
1969				
Sat. Aug. 2	Heart of Midlothian (Friendly)	Away	1	1
Mon. " 4	Glasgow Rangers (Friendly)	Away	1	0
Sat. " 9	Leeds United	Away	1	3
Wed. " 13	Burnley	Home	4	0
Sat. " 16	Liverpool	Home	2	0
Tues. " 19	Burnley	Away	1	0
Sat. " 23	Crystal Palace	Away	1	0
Wed. " 27	Chelsea	Home	1	0
Sat. " 30	Ipswich Town	Home	1	0
Wed. Sept. 3	(League Cup 2) <i>WOLVES</i>	Away	1	0
Sat. " 6	West Ham United	Away	1	0
Sat. " 13	Manchester City	Home	1	0
Tues. " 16	Arsenal	Away	1	0
Sat. " 20	Derby County	Away	1	0
Wed. " 24	(League Cup 3)	Home	2	1
Sat. " 27	Sunderland	Home	2	1
Sat. Oct. 4	Southampton	Away	2	0
Tues. " 7	Liverpool	Away	2	0
Sat. " 11	Wolverhampton Wanderers	Home	2	0
Wed. " 15	(League Cup 4)	Home	2	1
Sat. " 18	Newcastle United	Home	2	1
Sat. " 25	Stoke City	Away	2	1
Wed. " 29	(League Cup 5)	Home	2	0
Sat. Nov. 1	Sheffield Wednesday	Home	2	0
Sat. " 8	Nottingham Forest	Away	2	0
Sat. " 15	West Bromwich Albion (F.A. Cup 1)	Home	2	0
Wed. " 19	(League Cup Semi-Final, 1st Leg)	Away	1	3
Sat. " 22	Manchester United	Home	1	3
Sat. " 29	Everton	Home	2	3
Wed. Dec. 3	(League Cup Semi-final, 2nd Leg)	Away	2	3
Sat. " 6	Coventry City (F.A. Cup 2)	Away	2	3
Sat. " 13	Manchester City	Away	2	0
Sat. " 20	West Ham United	Home	2	0
Fri. " 26	Crystal Palace	Home	2	0
Sat. " 27	Ipswich Town	Away	2	0
1970				
Sat. Jan. 3	(F.A. Cup 3) <i>BRADFORD CITY</i>	Away	2	2
Sat. " 10	Derby County	Home	2	2
Sat. " 17	Sunderland	Away	2	0
Sat. " 24	(F.A. Cup 4) <i>PALACE</i>	Home	2	0
Sat. " 31	Southampton	Home	2	0
Sat. Feb. 7	Wolverhampton Wanderers (F.A. Cup 5)	Away	2	0
Sat. " 14	Leeds United	Home	2	0
Sat. " 21	Stoke City (F.A. Cup 6)	Home	2	0
Sat. " 28	Newcastle United	Away	2	0
Sat. Mar. 7	Manchester United (League Cup Final)	Home	2	0
Sat. " 14	Everton (F.A. Cup Semi-final)	Away	2	0
Sat. " 21	Coventry City	Home	2	0
Fri. " 27	Nottingham Forest	Home	2	0
Sat. " 28	West Bromwich Albion	Away	2	0
Mon. " 30	Sheffield Wednesday	Away	2	0
Sat. Apr. 4	Chelsea	Away	2	0
Sat. " 11	(F.A. Cup Final)	Home	2	0
Wed. " 15	Arsenal	Home	2	0

© Copyright The Football League Limited 1969

# FOOTBALL COMBINATION

## RESERVE TEAM FIXTURES

Date	Opponents	Ground	For	Ag.
1969				
Sat. Aug. 9	Fulham	Home	1	0
Wed. " 20	Reading	Away	2	0
Sat. " 23	Bristol City	Home	2	0
Sat. " 30	Luton Town	Away	2	0
Sat. Sept. 6	Leicester City	Home	2	0
Wed. " 10	Oxford United	Away	2	0
Mon. " 15	(London Challenge Cup, Prelim. Round)			
Sat. " 20	West Ham United	Home	2	0
Sat. " 27	Swansea City	Away	2	0
Mon. " 29	(London Challenge Cup 1)			
Sat. Oct. 4	Southampton	Home	2	0
Mon. " 13	(London Challenge Cup 2)			
Wed. " 15	Cardiff City	Away	2	0
Tues. " 21	Northampton Town	Away	2	0
Sat. " 25	Luton Town (Cup)	Home	2	0
Mon. " 27	(London Challenge Cup Semi-finals)			
Sat. Nov. 1	Gillingham	Away	2	0
Sat. " 8	Norwich City	Home	2	0
Wed. " 12	Plymouth Argyle	Away	2	0
Mon. " 17	(London Challenge Cup Final)			
Sat. " 22	Crystal Palace	Home	2	0
Wed. " 26	Walsall (Cup)	Home	2	0
Sat. " 29	Swindon Town	Away	2	0
Sat. Dec. 6	Bournemouth & Boscombe A.	Away	2	0
Sat. " 13	Ipswich Town	Home	2	0
Sat. " 20	Leicester City (Cup)	Away	2	0
1970				
Wed. Jan. 7	Birmingham City (Cup)	Away	2	0
Wed. " 14	Northampton Town (Cup)	Home	2	0
Sat. " 17	Queen's Park Rangers	Home	2	0
Tues. " 20	Luton Town (Cup)	Away	2	0
Sat. " 24	Birmingham City	Home	2	0
Tues. " 27	Walsall (Cup)	Away	2	0
Tues. Feb. 3	Northampton Town (Cup)	Away	2	0
Sat. " 7	Walsall	Home	2	0
Sat. " 14	Arsenal	Away	2	0
Tues. " 17	Bristol Rovers	Away	2	0
Wed. " 25	Leicester City (Cup)	Home	2	0
Sat. " 28	Birmingham City (Cup)	Home	2	0
Mon. Mar. 23	Peterborough United	Away	2	0
Sat. Apr. 4	Chelsea	Home	2	0

© Copyright The Football League Limited 1969

## YOUTH TEAM—SOUTH-EAST COUNTIES—DIV. I

Date	Opponents	Ground	For	Ag.
1969				
Sat. Aug. 9	Reading	Home	6	1
Sat. " 16	Millwall	Away	1	3
Sat. " 23	Watford	Home	2	0
Sat. " 30	Gillingham	Away	2	0
Sat. Sept. 6	Colchester United	Home	2	0
Sat. " 20	Ipswich Town	Home	2	0
Sat. " 27	Charlton Athletic	Away	2	0
Sat. Oct. 4	Arsenal	Home	2	0