

LEAGUE TABLES

FOOTBALL LEAGUE

FOOTBALL COMBINATION

DIVISION I

Up to and incl. 26th Aug.	Goals						
	P.	W.	D.	L.	F.	A.	Ps.
Everton	6	5	1	0	11	3	11
Liverpool	5	4	1	0	14	6	9
Wolverhampton	5	4	1	0	11	6	9
Coventry City	5	3	2	0	6	2	8
Leeds United	6	2	4	0	10	5	8
Derby County	5	2	3	0	5	2	7
Arsenal	6	2	3	1	5	4	7
Tottenham H.	5	3	0	2	9	5	6
West Ham Un.	6	2	2	2	6	6	6
Newcastle Un.	5	2	1	2	5	4	5
Stoke City	5	1	3	1	4	5	5
Burnley	6	1	3	2	7	10	5
Nottingham F.	6	1	3	2	4	7	5
West Bromwich	6	2	0	4	6	7	4
Crystal Palace	5	1	2	2	5	6	4
Chelsea	5	1	2	2	4	8	4
Sheffield Wed.	6	2	0	4	8	12	4
Southampton	5	1	1	3	9	10	3
Manchester City	5	1	1	3	7	8	3
Manchester Un.	5	0	2	3	3	11	2
Sunderland	5	0	2	3	1	7	2
Ipswich Town	5	0	1	4	1	6	1

Up to and incl. 26th Aug.

	Goals						
	P.	W.	D.	L.	F.	A.	Ps.
West Ham United	3	3	0	0	7	1	6
Cardiff City	3	3	0	0	7	3	6
Southampton	3	2	1	0	10	2	5
Ipswich Town	3	2	1	0	9	2	5
Swansea City	3	2	1	0	2	0	5
Queen's Park R.	3	2	1	0	9	5	5
Oxford United	2	2	0	0	6	1	4
Tottenham Hotspur	2	2	0	0	3	0	4
Chelsea	3	2	0	1	5	4	4
Arsenal	3	1	1	1	5	2	3
Luton Town	2	1	1	0	4	2	3
Bristol Rovers	3	1	1	1	4	4	3
Bournemouth & B.	3	0	3	0	4	4	3
Birmingham City	3	1	1	1	4	5	3
Leicester City	3	1	1	1	6	7	3
Reading	1	1	0	0	2	1	2
Bristol City	3	1	0	2	6	6	2
Plymouth Argyle	3	1	0	2	4	7	2
Norwich City	3	0	1	2	1	3	1
Swindon Town	3	0	1	2	3	7	1
Walsall	3	0	0	3	3	9	0
Gillingham	3	0	0	3	3	9	0
Peterborough Un.	3	0	0	3	2	9	0
Crystal Palace	2	0	0	2	3	6	0
Fulham	3	0	0	3	0	4	0
Northampton Town	1	0	0	1	0	6	0

SOUTH-EAST COUNTIES LEAGUE

DIVISION I

Up to and incl. 23rd Aug.	Goals						
	P.	W.	D.	L.	F.	A.	Ps.
West Ham Un.	3	2	1	0	11	4	5
Ipswich Town	3	2	1	0	4	2	5
Crystal Palace	3	2	0	1	3	1	4
Orient	2	2	0	0	8	3	4
Tottenham H.	3	2	0	1	9	4	4
Charlton Athletic	3	1	2	0	11	5	4
Queen's Park R.	3	1	2	0	8	4	4
Arsenal	3	1	1	1	8	2	3
Millwall	3	1	1	1	8	7	3
Colchester Un.	3	1	1	1	7	7	3
Chelsea	3	1	1	1	4	4	3
Luton Town	3	1	0	2	4	8	2
Watford	3	0	1	2	3	7	1
Gillingham	2	0	1	1	2	6	1
Fulham	3	0	0	3	3	17	0
Reading	3	0	0	3	1	13	0

DIVISION 2 CUP

Up to and incl. 23rd Aug.	Goals						
	P.	W.	D.	L.	F.	A.	Ps.
Millwall	3	2	0	1	7	9	4
Crystal Palace	2	1	1	0	5	4	3
Chelsea	2	1	1	0	5	4	3
West Ham Un.	2	1	0	1	7	2	2
Charlton Athletic	1	1	0	0	3	0	2
Tottenham H.	1	0	1	0	4	4	1
Fulham	3	0	1	2	5	11	1
Orient	2	0	0	2	1	3	0

LEAGUE MATCH BOOKINGS

Bookings for reserved seats, price 13s. 0d., will open 21 days before each League match. Applications should be addressed to the Ticket Office Manager, and must be accompanied by a stamped addressed envelope.



FOOTBALL LEAGUE—DIVISION ONE

TOTTENHAM HOTSPUR

v.

IPSWICH TOWN

Official Programme

Price SIXPENCE



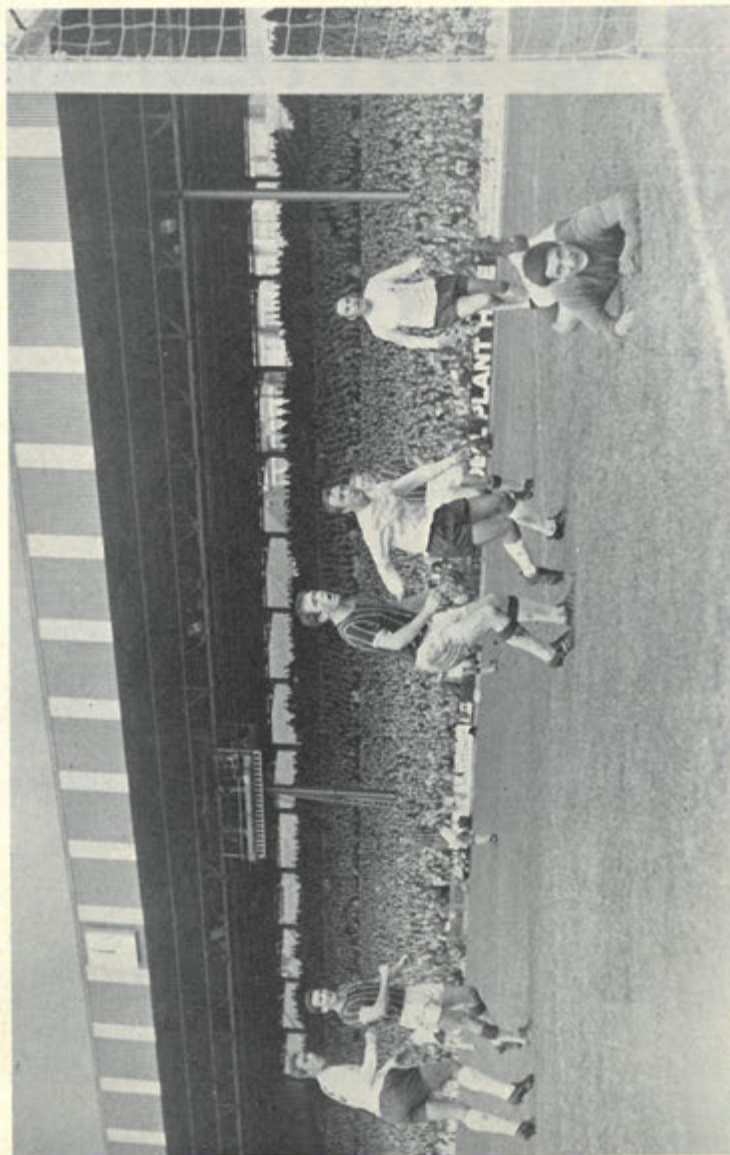
SEASON 1969-70

Vol. 62

No. 6

Saturday, 30th August, 1969

KICK-OFF 3 p.m.



Crystal Palace v. Spurs. Martin Chivers (left) turns away after heading Spurs' first goal at Selhurst Park.

Photo by Sport & General Press Agency Ltd.

TOTTENHAM HOTSPUR

FOOTBALL AND ATHLETIC COMPANY LIMITED

Chairman: FREDK. WALE

Vice-Chairman: S. A. WALE

Directors: C. F. COX, A. RICHARDSON, H. G. S. GROVES

Manager: W. E. NICHOLSON

Secretary: G. W. JONES

Medical Officer: Dr. BRIAN CURTIN

League Champions: 1950-51, 1960-61

F.A. Cup Winners: 1901, 1921, 1961, 1962, 1967

Winners of European Cup Winners Cup: 1963

COPYRIGHT

ALL RIGHTS RESERVED

COMMENT

HERE we are at the last week-end of August, with six League fixtures already played in addition to our two big pre-season matches in Scotland. The season is well under way, and it is now a far cry to the old days when the League season opened on the last Saturday in August. Yet that was the practice until 1947-48.

With six matches played, we have completed one-seventh of our League programme. It would be timely to indulge in the popular soccer pastime of comparisons with our record after six matches last season, but as these notes were of necessity written before Wednesday evening's match with Chelsea, our findings would be of little value.

Suffice it to say that after our first five League matches last season, three of which were at home, we had only three points. If that comparison has any value at all, it is at least a favourable one.

WELCOME, IPSWICH

This afternoon we offer warm greetings to the officials, players and supporters of Ipswich Town, who have had a most disheartening start to the season.

Here again, these notes had to be written prior to the visit of Ipswich to Southampton on Wednesday, and the result of that match would undoubtedly have some influence on the mood of our visitors today.

Adversity is nothing new to Ipswich. They were involved in a struggle against relegation only last season, and after

playing 26 League matches had only 21 points. At that stage only four clubs stood below Ipswich on the First Division chart, but they staged a commendable rally in the second half of the season to finish in 12th position.

Prior to their mid-week visit to Southampton, Ipswich had gained only one point from their first five matches, three of which were at home. A goalless draw at home to Nottingham Forest on the season's opening day yielded that solitary point, and Derby County and Coventry City have since visited Ipswich and won by the only goal of the match.

Ipswich lost their first two away matches to Chelsea and Derby by 1-0 and 3-1 respectively. The goal at Derby was scored by Frank Brogan.

LAST SEASON

When Ipswich were here last season, the match ended in a 2-2 draw.

Ron Wigg exploited a lapse in our defence to give Ipswich the lead in the early minutes, but Jimmy Greaves put us level from the penalty spot following an infringement against Alan Gilzean.

Before half-time we went ahead with a goal by Cyril Knowles, who flighted a deceptive dipping shot into the Ipswich net. Midway through the second half Derek Jefferson saved a point for Ipswich with a long-range shot.

The game was played on a dismal March evening before a crowd of 21,608, our smallest home gate of the season.

CRYSTAL PALACE v. SPURS



Philip Beal in midfield action with Tony Want in close attendance.

Photo by MONTE FRESCO—DAILY MIRROR



Alan Gilzean indulges in a spot of ball-juggling, to the obvious apprehension of John Jackson, the Palace goalkeeper.

Photo by Topix—Thomson Newspapers

MAN IN CHARGE

Referee for today is Mr. Pat Partridge of Middlesbrough, who is in his second season on the Football League Full List of Referees after two seasons on the Supplementary List and one as a League linesman.

Mr. Partridge has been refereeing since 1953, when he started in minor football, and is a prominent personality in refereeing circles in the North-East of England.

He is secretary to the Middlesbrough Branch of the Referees' Association, and is employed as a technical electrical representative.

Mr. Partridge is a firm believer in regular meetings between referees and players as a means of bringing about a better all-round understanding of the Laws of the Game. He also feels that talks by referees to supporters' organisations can do untold good.

His last match on this ground was our League engagement with Stoke City last November.

PAST CLASHES

Here are the results of past meetings between Spurs and Ipswich in the League, F.A. Cup and F.A. Charity Shield. Spurs' score is shown first.

LEAGUE			
Season	Home	Away	
1961-62	1-3	2-3	Div. 1
1962-63	5-0	4-2	Div. 1
1963-64	6-3	3-2	Div. 1
1968-69	2-2	1-0	Div. 1
F.A. CUP			
1964-65	5-0		fourth round
F.A. CHARITY SHIELD			
1962-63	-	5-1	

IPSWICH CHIEF

Mr. Bobby Robson took over as manager of Ipswich Town in January of this year.

He comes from County Durham, and joined Fulham as a junior in 1950. A wing-half or inside-forward, he was transferred to West Bromwich Albion in 1956, and while with the Staffordshire

club he made many appearances for England.

In 1962 Bobby returned to Fulham, and remained at Craven Cottage until two years ago, when he became manager of the Vancouver club in Canada.

In January, 1968 he was appointed manager of Fulham, thus joining the West London club a third time, but he remained in charge of the Cottagers only until last November.

Mr. Robson's predecessors in the managerial chair at Ipswich were Bill McGarry, Jackie Milburn, Alf Ramsey and Adam Scott Duncan.

NEW GROUND

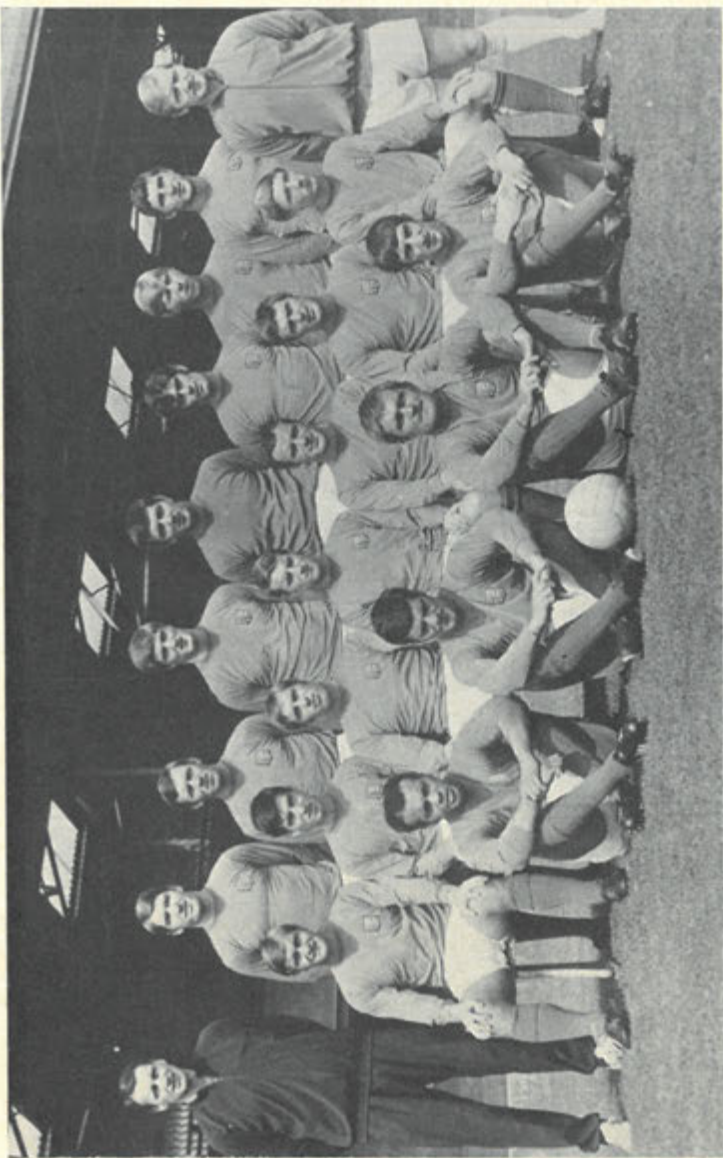
Our match with Crystal Palace last Saturday meant breaking new ground as far as League football is concerned. Never previously had we met Palace for League points, and until last week-end Selhurst Park was the only London ground we had not visited in the competition.

It is, perhaps, a point of interest that the promotion of Palace at the end of last season has left Millwall as the only London club never to have competed in the First Division.

The First Division experience of Queen's Park Rangers and Fulham is of recent memory, while Orient spent season 1962-63 in the top flight. Charlton Athletic were in the First Division from 1936 to 1956, and Brentford enjoyed that distinction from 1935 to 1947.

QUIZ FOR TODAY—Answers on page 13

1. Who was the last player to figure in a transfer deal between Spurs and Ipswich, and when?
2. Only one member of the team that beat Ipswich in the F.A. Charity Shield match in August, 1962 is still a player with Spurs. Who is he?
3. Can you name the former Ipswich star who is now playing for a London Second Division club?
4. A key defender in the Ipswich team that won the League championship in season 1961-62 is now coach to a London club. Who is he?
5. Which club accompanied Ipswich into the first division at the end of season 1967-68?



Ipswich Town, 1969-70. Back row, left to right: Mr. R. Robson (Manager), D. Jefferson, C. Woods, R. Wigg, D. Best, J. O'Rourke, R. Bell, M. McNeil, C. Lea (Trainer). Centre row, left to right: M. Mills, M. Lambert, C. Harper, W. Baxter, T. Carroll, I. Collard, C. Woods. Front row, left to right: S. Stacey, P. Morris, R. Hunt, F. Brogan.

Photo by H. H. Clarke, Ipswich

TODAY'S VISITORS . . .

Most of the players expected to appear for Ipswich today were in the team that held us to a draw in the corresponding match last season.

David Best, the goalkeeper, is truly a product of village football. He was born in Wareham, Dorset, and played for a village club named Stoborough United before stepping up into the Dorset Combination with the Wareham club.

He turned professional with Bournemouth, and later moved to Oldham Athletic. Ipswich signed him from Oldham last October.

The Ipswich defensive line is likely to consist of **Tommy Carroll**, **Billy Baxter**, **Derek Jefferson** and **Mick Mills**.

LONE IRISHMAN

Carroll, who has played for *Eire* at Under-23 and full international level, is the only Irishman on the club's books. He was born in Dublin, and joined Ipswich from Cambridge City in July, 1966.

Baxter is the Ipswich skipper. An Edinburgh man, he joined Ipswich from Broxburn Athletic in June, 1960, and has gained both First and Second Division championship medals with the Suffolk club.

We have good reason to remember **Jefferson**. He scored the second-half equaliser that earned Ipswich a point here last season. He comes from Morpeth in the north-east, and first signed for Ipswich as an apprentice professional in May, 1964.

POMPEY YOUTH

Mills comes from Godalming in Surrey, and was at one time a member of Portsmouth's youth squad. When Pompey decided to scrap their youth scheme, **Mills** joined Ipswich as an apprentice. That was in August, 1965, and in the following February, he became a full professional.

If Ipswich adopt a 4-3-3 formation, their midfield trio may consist of **Charlie Woods**, **Peter Morris** and **Colin Viljoen**.

Woods, often described as a winger, is a Cumberland man. He is a former Newcastle United and Bournemouth

player, who spent 12 months with Crystal Palace before joining Ipswich in July, 1966.

Morris is a Mansfield man, who spent nine years with the Mansfield Town club before signing for Ipswich in March, 1968.

Viljoen is a South African, whose home-town is Johannesburg. He joined Ipswich as an amateur in 1965, and became a full-time professional in August, 1967. **Viljoen** enjoyed a spectacular start to his League career.

GOAL THREAT

The Ipswich goal threat is expected to come from **John O'Rourke**, **Ron Wigg** and **Frank Brogan**. Naturally, we hope it doesn't come at all!

O'Rourke's background is well known in London. After making his mark as centre-forward in the Barking Boys team, he joined Arsenal's ground staff. He moved to Chelsea, and later signed for Luton Town. His next move took **O'Rourke** to Middlesbrough, who transferred him to Ipswich in February, 1968.

Wigg, who scored the first goal of the match for Ipswich here last season, is a Londoner who was formerly on Orient's books.

Brogan has been with Ipswich since June, 1964, when his transfer was secured from Celtic. He is a Glasgow man, and before joining Celtic played for St. Rochs, the Scottish minor club.

A newcomer to Ipswich this season is **Ian Collard**, signed from West Bromwich Albion in mid-May. Collard, who wore the No. 8 shirt for Albion here last season, is a North-easterner from South Hetton. He joined Albion as a youngster.

Mick McNeil is the former English international full-back, who was signed from Middlesbrough in June, 1964. He is a North-easterner from Stockton.

The Ipswich team in the corresponding match last season was: **Best**; **Mills**, **Houghton**; **Morris**, **Baxter**, **Jefferson**; **Hegan**, **Viljoen**, **Wigg**, **O'Rourke** and **Woods**. **Billy Houghton** and **Danny Hegan** are now with Leicester City and West Bromwich Albion respectively.

HALF-TIME SCORES IN OTHER MATCHES

The appended Code corresponds with letters on the Scoring Board thus means the first-named Club has scored 1 and their opponents 0.

A! ★ Not played

A Burnley v. Manchester City	N Huddersfield T. v. Bristol City
B Chelsea v. Crystal Palace	O Middlesbrough v. Aston Villa
C Coventry v. Wolverhampton W.	P Millwall v. Leicester City
D Everton v. Leeds United	Q Norwich City v. Carlisle United
E Manchester United v. Sunderland	R Portsmouth v. Blackburn Rovers
F Newcastle United v. Arsenal	S Preston North End v. Oxford Un.
G Nottingham F. v. West Ham Un.	T Swindon Town v. Charlton Ath.
H Sheffield Wednesday v. Liverpool	U Watford v. Sheffield United
J Stoke City v. Southampton	V Barrow v. Fulham
K West Bromwich v. Derby County	W Gillingham v. Luton
L Birmingham C. v. Queen's Park R.	X Orient v. Mansfield Town
M Cardiff City v. Bolton Wanderers	Y Brentford v. Rochdale

FOOTBALL LEAGUE CUP — SECOND ROUND WOLVERHAMPTON W. v. TOTTENHAM HOTSPUR

In the event of next Wednesday's match at Wolverhampton resulting in a draw, the replay will take place here on **MONDAY, 8th SEPTEMBER**, kick-off 7.30 p.m. It has not been possible to arrange a replay on the usual Wednesday evening owing to the anticipated calls on players for the Ireland v. U.S.S.R. match.

RESERVED SEATS

We regret that owing to the limited time available, NO POSTAL APPLICATIONS can be accepted. Tickets, priced 16s. and 13s., would be on sale at the Ticket Office from 10 a.m. to 5 p.m. on Thursday, Friday and Saturday, 4th to 6th September, and also from 10 a.m. to 1 p.m. on Sunday, 7th September.

SEASON-TICKET HOLDERS wishing to obtain their usual seats should produce completed coupon "A" from their ticket books.

WEST STAND	Blocks H, J, K and L	16s.
	Blocks M and G	13s.
EAST STAND	Blocks C, D, E, F and G	16s.
NORTH STAND	Block S	13s.

UNRESERVED SEATS

Seats in the North and Park Lane Stands would be available through the turnstiles on the evening of the match at 10s.

FORTHCOMING FIXTURES

Saturday, 6th September, 1969

LEICESTER CITY RESERVES

Football Combination Kick-off 3 p.m.

Saturday, 13th September, 1969

MANCHESTER CITY

Football League, Division I Kick-off 3 p.m.

FOOTBALL LEAGUE, DIVISION I

KICK-OFF 3 p.m.

TOTTENHAM HOTSPUR

White Shirts, Blue Shorts

RIGHT WING
LEFT WING

1
PAT JENNINGS

2
TONY WANT 3
CYRIL KNOWLES

4
ALAN MULLERY 5
MIKE ENGLAND 6
PETER COLLINS
(Captain)

8
JIMMY GREAVES 10
ALAN GILZEAN

7
JIMMY PEARCE 9
MARTIN CHIVERS 11
ROGER MORGAN

11
FRANK BROGAN 9
RON WIGG 7
CHARLIE WOODS


10
BOBBY HUNT 8
IAN COLLARD

6
DEREK JEFFERSON 5
BILLY BAXTER 4
COLIN VILJOEN
(Captain)

3
MICK MILLS 2
TOMMY CARROLL

1
DAVID BEST

LEFT WING
RIGHT WING



IPSWICH TOWN

Royal Blue Shirts, White Shorts

Referee: **Mr. P. PARTRIDGE**, Warks

Linesmen: **Mr. J. H. V. JACKSON**, Hunts (Red Flag)

Mr. R. I. KIRK, Wilts (Yellow Flag)

Substitutes: (Home Club)..... (Visiting Club).....



DEVELOPMENT SOCIETIES

DAILY DRAW PRIZES £190 WEEKLY

AGENTS REQUIRED for our expanding scheme. If you are over 21, why not contact our Pools Organiser, Mr. Ron Clarke, who will be pleased to supply full details. Whilst doing a worthwhile job for the Club, you obtain for yourself the following benefits:

- ★ Commission on Sales
- ★ Special Prizes every week
- ★ Ground admission concessions

All enquiries to the Pools Office:

Spurs Development Society, 748 High Road, Tottenham, N.17
or RING 808-0281

RESULTS: WEEK 45 — 16th to 23rd August, 1969

	Mon.	Tues.	Wed.	Thurs.	Fri.
£10	1650	9812	0658	6942	7525
£5	0577	6993	1245	5272	9071
£3	1331	1410	9780	8196	7003

Saturday: £75—7487 £15—1845 £10—9496

Tickets, priced 1s. each, can be obtained from the Pools Office in the main entrance or through agents.

★ GOAL TIME ★

At all home First Team matches you can win:

£50 (1st Prize) **£25** (2nd Prize) **£10** (3rd Prize)

RESULT: LIVERPOOL—16th August

1st Goal: 1 min. 56 sec., **£50** 2nd Goal: 35 min. 11 sec., **£25**

The third prize of £10 was shared equally between the holders of the three "No Goal" tickets.

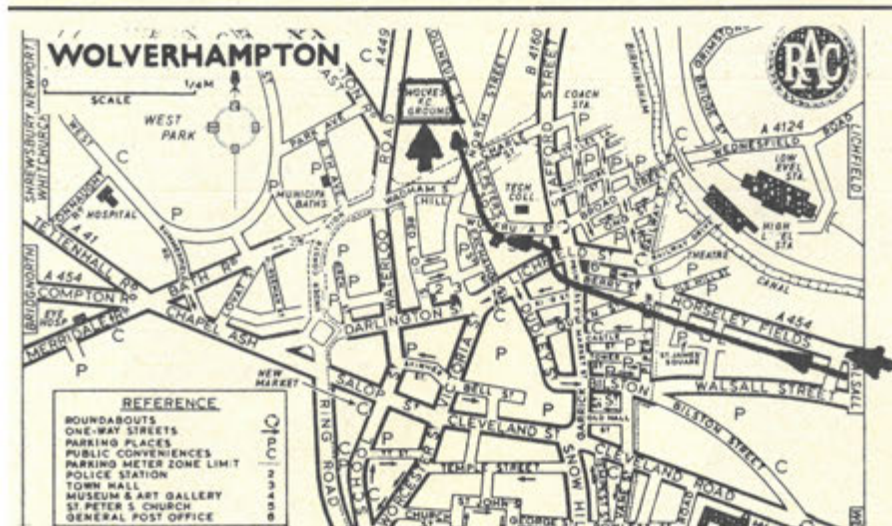
Tickets, priced 1s. each, can be obtained from the officially-appointed sellers in the main entrance and at various positions throughout the ground.



SPURS FIRST TEAM SQUAD

Back row, left to right: Alan Gilzean, Martin Chivers, Mike England, Pat Jennings, Ken Hancock, Peter Collins, Cyril Knowles, Philip Beal. Front row, left to right: Dennis Bond, Joe Kinnear, Neil Johnson, Jimmy Greaves, Alan Mullery, Jimmy Pearce, David Jenkins, Roger Morgan, Tony Want.

Photo by Atkins Photos, Tottenham



GOING TO WOLVERHAMPTON ?

For the benefit of supporters planning to watch our League Cup match at Wolverhampton next Wednesday evening, we have reproduced the above map, together with the following directions, compiled by the R.A.C., for those travelling by road.

Follow M.1 Motorway northward to intersection with the M.45 . . . proceed by the M.45, then A.45 to Stonebridge . . . turn right on to A.452 and continue for 11½ miles to the junction with B.4149, along which turn left to the A.34 . . . continue by the A.34 to Walsall, then left on to the A.454 to Wolverhampton. The total distance from the Tottenham area is approximately 132 miles.

Enter Wolverhampton by Horseley Fields (A.454) and continue to the crossroads. Proceed ahead to the end of Berry Street. Turn right and continue to roundabout and take the first exit—Wulfruna Street. Turn right and at the crossroads bear left to Molineux Street and the ground is on the left.

Parking is controlled by the police so watch for signs, including diversions. The nearest car parks are at Park

Avenue, Stafford Street (Coach Station), North Street and Waterloo Road.

COACH TRAVEL

Henry Coaches will operate a service at 19s. return. Coaches will leave No. 1 Broad Lane, N.15 at 2.15 p.m. and Whitehall Street (opposite ground) at 2.30 p.m. For fuller details telephone 806 0661.

BY RAIL

British Rail will issue day return tickets at 43s. Trains suitable for the 7.30 p.m. kick-off are as follows:

FORWARD			
Euston	dep.	15.15R	15.45*
Wolverhampton			
(High Level)	arr.	17.16	17.37
Euston	dep.	16.15R	16.45R
Wolverhampton			
(High Level)	arr.	18.16	18.41
R—Restaurant service			
*—Change at Birmingham			
RETURN			
Wolverhampton			
(High Level)	dep.	22.15	
Euston	arr.	02.38	
Change at Birmingham			

JIMMY'S LANDMARK

Today is another landmark in the career of Jimmy Greaves. This afternoon he is due to make his 300th League appearance in Spurs' colours.



Congratulations, Jim. May today's match prove yet another memorable occasion in your career.

ANOTHER HONOUR

Another distinction has come the way of Jimmy Greaves. He has been elected "Player of the Year" by the Spurs Supporters' Club, and will receive his award at a special presentation dance at the Bruce Grove Ballroom on Thursday, 16th October.

Alan Mullery has won the award in each of the last two years, and previous winners were Jimmy Robertson and Ron Henry.

Next to Jimmy, most votes were polled by Philip Beal and Pat Jennings.

INTER-LEAGUE MATCH

The Football League will play the Football League of Ireland on Barnsley's ground on 10th September, 1969, kick-off 7.30 p.m.

This will be an *all-ticket* match and tickets in advance are obtainable from the Secretary, Barnsley Football Club, Oakwell Ground, Grove Street, Barnsley, Yorkshire, as follows:

Centre Stand	£1 5s. 0d.
Wing Stand (bench seating)	£1 0s. 0d.
Terrace Paddock	7s. 6d.
Ground	6s. 0d.

Applications for tickets, obtainable only from the Barnsley club, should be accompanied by remittance and stamped addressed envelope for return of tickets.

NO BOOKINGS

Supporters planning to watch our away match with West Ham United next Saturday should note that no pre-match bookings can be made. A limited number of seats are available, however, at the West Ham ground on the day of the game.

In Passing

Spurs have been drawn at home to Brentford in the First Round of the London Challenge Cup. This match will be played on Wednesday evening, 1st October, provided we are not involved in a League Cup replay.

Our First Round away match with Ipswich in the South-East Counties Senior League Cup has been dated for 13th September.

Spurs have lost on each of the last three visits to Wolverhampton. We hope our luck changes in the League Cup on Wednesday.

Brian Turner, who scored for the Youth team against Watford last Saturday, has travelled all the way from New South Wales, Australia, to spend a trial period with Spurs.

Pat Jennings watched Queen's Park Rangers, skipped by former Spur Terry Venables, beat Blackpool 6-1 on Tuesday evening.

FLASHBACK

TO 20 YEARS AGO THIS WEEK-END

SPURS gave a disappointing display against Blackburn Rovers in our first home Saturday match of the season, and finished losers by 3-2.

Sonny Walters gave Spurs an early lead, but Blackburn equalised through an own goal by Alf Ramsey before half-time. Walters regained Spurs' lead with a fine goal in the second half, but late goals by Bob Priddy and Dennis Westcott won the game for Blackburn.

Team: Ditchburn; Ramsey, Withers; Nicholson, Clarke, Burgess; Walters, Bennett, Duquemin, Bailly and Medley. Attendance: 53,016.

ANSWERS TO QUIZ

1. Ken Hancock, who was transferred from Ipswich to Spurs in March of this year.
2. Jimmy Greaves.
3. Ray Crawford of Charlton Athletic.
4. Andy Nelson of Millwall.
5. Queen's Park Rangers.

FOOTBALL LEAGUE—DIVISION I

FIRST TEAM FIXTURES

Date	Opponents	Ground	For	Ag.
1969				
Sat. Aug. 2	Heart of Midlothian (Friendly)	Away	1	1
Mon. " 4	Glasgow Rangers (Friendly)	Away	1	0
Sat. " 9	Leeds United	Away	1	3
Wed. " 13	Burnley	Home	4	0
Sat. " 16	Liverpool	Home	0	2
Tues. " 19	Burnley	Away	2	0
Sat. " 23	Crystal Palace	Away	2	0
Wed. " 27	Chelsea	Home	1	1
Sat. " 30	Ipswich Town	Home	2	0
Wed. Sept. 3	Wolverhampton W., League Cup 2nd Rd.	Away	0	0
Sat. " 6	West Ham United	Away	0	0
Sat. " 13	Manchester City	Home	0	0
Tues. " 16	Arsenal	Away	0	0
Sat. " 20	Derby County	Away	0	0
Wed. " 24	(League Cup 3)			
Sat. " 27	Sunderland	Home	0	0
Sat. Oct. 4	Southampton	Away	0	0
Tues. " 7	Liverpool	Away	0	0
Sat. " 11	Wolverhampton Wanderers	Home	0	0
Wed. " 15	(League Cup 4)			
Sat. " 18	Newcastle United	Home	2	1
Sat. " 25	Stoke City	Away	1	1
Wed. " 29	(League Cup 5)			
Sat. Nov. 1	Sheffield Wednesday	Home	1	0
Sat. " 8	Nottingham Forest	Away	0	0
Sat. " 15	West Bromwich Albion (F.A. Cup 1)	Home	0	0
Wed. " 19	(League Cup Semi-Final, 1st Leg)			
Sat. " 22	Manchester United	Away	1	2
Sat. " 29	Everton	Home	2	0
Wed. Dec. 3	(League Cup Semi-final, 2nd Leg)			
Sat. " 6	Coventry City (F.A. Cup 2)	Away	2	0
Sat. " 13	Manchester City	Away	2	0
Sat. " 20	West Ham United	Home	0	0
Fri. " 26	Crystal Palace	Home	0	0
Sat. " 27	Ipswich Town	Away	0	0
1970				
Sat. Jan. 3	(F.A. Cup 3) BRADFORD C.	Away	2	0
Sat. " 10	Derby County	Home	2	0
Sat. " 17	Sunderland	Away	2	0
Sat. " 24	(F.A. Cup 4) PALACE	Home	2	0
Sat. " 31	Southampton	Home	2	0
Sat. Feb. 7	Wolverhampton Wanderers (F.A. Cup 5)	Away	2	0
Sat. " 14	Leeds United	Home	2	0
Sat. " 21	Stoke City (F.A. Cup 6)	Home	2	0
Sat. " 28	Newcastle United	Away	2	0
Sat. Mar. 7	Manchester United (League Cup Final)	Home	2	0
Sat. " 14	Everton (F.A. Cup Semi-final)	Away	2	0
Sat. " 21	Coventry City	Home	2	0
Fri. " 27	Nottingham Forest	Home	2	0
Sat. " 28	West Bromwich Albion	Away	2	0
Mon. " 30	Sheffield Wednesday	Away	2	0
Sat. Apr. 4	Chelsea	Away	2	0
Sat. " 11	(F.A. Cup Final)			
Wed. " 15	Arsenal	Home	2	0

© Copyright The Football League Limited 1969

FOOTBALL COMBINATION

RESERVE TEAM FIXTURES

Date	Opponents	Ground	For	Ag.
1969				
Sat. Aug. 9	Fulham	Home	1	0
Sat. " 23	Bristol City	Home	2	0
Sat. " 30	Luton Town	Away		
Sat. Sept. 6	Leicester City	Home		
Wed. " 10	Oxford United	Away		
Sat. " 20	West Ham United	Home		
Sat. " 27	Swansea City	Away		
Wed. Oct. 1	Brentford, London Challenge Cup 1st Rd.	Home	0	0
Sat. " 4	Southampton	Home	3	0
Mon. " 13	(London Challenge Cup 2) BAR KING	Away	2	0
Sat. " 15	Cardiff City	Away		
Sat. " 25	Luton Town (Cup)	Home		
Mon. " 27	(London Challenge Cup Semi-finals)			
Sat. Nov. 1	Gillingham	Away	3	1
Sat. " 8	Norwich City	Home		
Wed. " 12	Plymouth Argyle	Away		
Mon. " 17	(London Challenge Cup Final) AGS 3 WIMBORNE	Home		
Sat. " 22	Crystal Palace	Home		
Wed. " 26	Walsall (Cup)	Home		
Sat. " 29	Swindon Town	Away		
Sat. Dec. 6	Bournemouth & Boscombe A.	Away		
Sat. " 13	Ipswich Town	Home	4	2
Sat. " 20	Leicester City (Cup)	Away	1	2
1970				
Wed. Jan. 7	Birmingham City (Cup)	Away		
Wed. " 14	Northampton Town (Cup)	Home		
Sat. " 17	Queen's Park Rangers	Home		
Tues. " 20	Luton Town (Cup)	Away		
Sat. " 24	Birmingham City	Home		
Tues. " 27	Walsall (Cup)	Away		
Tues. Feb. 3	Northampton Town (Cup)	Away		
Sat. " 7	Walsall	Home		
Sat. " 14	Arsenal	Away		
Tues. " 17	Bristol Rovers	Away		
Wed. " 25	Leicester City (Cup)	Home		
Sat. " 28	Birmingham City (Cup)	Home		
Mon. Mar. 23	Peterborough United	Away		
Sat. Apr. 4	Chelsea	Home		
	Reading	Away		

© Copyright The Football League Limited 1969

YOUTH TEAM—SOUTH-EAST COUNTIES—DIV. I

Date	Opponents	Ground	For	Ag.
1969				
Sat. Aug. 9	Reading	Home	6	1
Sat. " 16	Millwall	Away	1	3
Sat. " 23	Watford	Home	2	0
Sat. " 30	Gillingham	Away		
Sat. Sept. 6	Colchester United	Home		
Sat. " 13	Ipswich Town (Cup)	Away		
Sat. " 20	Ipswich Town	Home		
Sat. " 27	Charlton Athletic	Away	0	0
Sat. Oct. 4	Arsenal	Home		