

## LEAGUE TABLES

### FOOTBALL LEAGUE

### FOOTBALL COMBINATION

#### DIVISION I

Up to and incl. 9th Nov.	P.	W.	D.	L.	F.	A.	Ps.
Liverpool	18	11	4	3	35	12	26
Everton	18	10	6	2	36	16	26
Leeds United	17	10	5	2	25	15	25
Arsenal	17	8	7	2	20	11	23
Chelsea	18	8	6	4	32	18	22
Burnley	18	10	2	6	28	31	22
West Ham Un.	18	7	7	4	34	21	21
Tottenham H.	18	7	7	4	32	26	21
Sheffield Wed.	17	6	7	4	21	20	19
West Bromwich	18	7	5	6	27	30	19
Sunderland	18	5	7	6	21	29	17
Newcastle United	18	4	8	6	25	25	16
Manchester Un.	17	5	6	6	22	26	16
Southampton	18	5	6	7	22	26	16
Wolverhampton	18	5	6	7	17	22	16
Manchester City	18	4	7	7	24	26	15
Stoke City	18	5	4	9	17	27	14
Ipswich Town	18	5	3	10	24	31	13
Coventry City	18	3	6	9	19	30	12
Nottingham F.	16	1	9	6	23	28	11
Leicester City	18	3	5	10	16	30	11
Queen's Park R.	18	2	5	11	22	42	9

#### Up to and incl. 12th Nov.

Goals	P.	W.	D.	L.	F.	A.	Ps.
Tottenham Hotspur	6	6	0	0	22	1	12
Arsenal	6	4	2	0	17	4	10
Queen's Park R.	6	4	2	0	17	8	10
Bristol Rovers	6	4	1	1	16	11	9
Fulham	5	4	0	1	14	5	8
West Ham United	6	2	4	0	13	6	8
Birmingham City	7	4	0	3	17	10	8
Crystal Palace	5	4	0	1	8	5	8
Cardiff City	5	3	1	1	5	3	7
Gillingham	6	3	1	2	6	5	7
Oxford United	6	3	1	2	11	12	7
Chelsea	6	2	1	3	13	11	5
Ipswich Town	6	1	3	2	13	13	5
Plymouth Argyle	6	2	1	3	6	8	5
Peterborough United	6	1	3	2	6	10	5
Swansea Town	7	1	3	3	9	19	5
Southampton	5	2	0	3	7	5	4
Bristol City	4	2	0	2	6	7	4
Norwich City	5	1	2	2	10	9	4
Northampton Town	5	2	0	3	5	10	4
Leicester City	6	2	0	4	7	16	4
Walsall	6	1	1	4	12	18	3
Reading	6	1	1	4	5	17	3
Luton Town	6	1	0	5	6	21	2
Bournemouth & B.A.	5	0	1	4	3	11	1
Swindon Town	5	0	0	5	2	11	0

### METROPOLITAN LEAGUE

### SOUTH-EAST COUNTIES

#### Up to and incl. 9th Nov.

Goals	P.	W.	D.	L.	F.	A.	Ps.
Tottenham H.	11	7	2	2	32	16	16
Stevenage Ath.	11	6	3	2	17	12	15
West Ham Un.	14	5	3	6	22	25	13
Braintree & Crit.	10	5	2	3	14	10	12
Romford	11	4	4	3	29	26	12
Chelmsford City	13	5	2	6	25	24	12
Bury Town	8	5	1	2	14	6	11
Sheppey United	9	5	1	3	22	18	11
Arsenal	11	5	1	5	14	22	11
Cray Wanderers	10	4	2	4	18	13	10
Met. Police	8	5	0	3	25	23	10
Bletchley	8	4	1	3	10	9	9
Hatfield Town	10	1	5	4	12	18	7
Wellingborough T.	9	3	0	6	16	20	6
Wimbledon	6	2	0	4	9	13	4
Bedford Town	13	1	1	11	11	35	3

#### DIVISION I

#### Up to and incl. 9th Nov.

Goals	P.	W.	D.	L.	F.	A.	Ps.
Ipswich Town	11	10	1	0	44	7	21
Millwall	10	9	1	0	42	14	19
Orient	10	7	3	0	40	16	17
Queen's Park R.	11	5	4	2	22	14	14
Crystal Palace	11	7	0	4	33	22	14
Charlton Ath.	9	4	4	1	21	11	12
Tottenham H.	10	5	1	4	21	10	11
Colchester Un.	11	5	0	6	19	27	10
West Ham Un.	11	4	2	5	14	24	10
Chelsea	11	4	1	6	21	25	9
Fulham	10	4	0	6	13	18	8
Luton Town	11	3	2	6	21	30	8
Brighton & Hove	11	3	1	7	13	19	7
Reading	11	2	3	6	8	35	7
Gillingham	10	3	0	7	7	18	6
Watford	10	1	2	7	11	37	4
Oxford United	10	0	1	9	5	28	1



## FOOTBALL LEAGUE—DIVISION ONE

# TOTTENHAM HOTSPUR

v.

# SUNDERLAND

## Official Programme

Price SIXPENCE



SEASON 1968-69

Vol. 61

No. 27

Saturday, 16th November, 1968

KICK-OFF 3 p.m.





**Spurs v. Stoke City.** Gordon Banks, Stoke's goalkeeper, clears with Alan Gilzean in close attendance. Photo by Atkins Photos, Tottenham

# TOTTENHAM HOTSPUR

## FOOTBALL AND ATHLETIC COMPANY LIMITED

Chairman: FREDK. WALE Vice-Chairman: S. A. WALE

Directors: C. F. COX, A. RICHARDSON

Manager: W. E. NICHOLSON Secretary: G. W. JONES Medical Officer: Dr. BRIAN CURTIN

League Champions: 1950-51, 1960-61

F.A. Cup Winners: 1901, 1921, 1961, 1962, 1967

Winners of European Cup Winners Cup: 1963

COPYRIGHT

ALL RIGHTS RESERVED

## COMMENT

OUR hard-earned point at Leeds last Saturday has left us with 21 points from the 18 League matches played to date. At the same stage of last season, with 18 First Division matches played, we had one point more.

In the course of the next five League matches last season, three of which were at home, we picked up only two points. It was a bad patch that pushed us down to a mid-table position.

We recovered to finish the League season in seventh position, but the effects of a mid-season slump are obvious. With our knowledge of last season's events in mind—and that was not the first time we have hit a barren spell a few weeks before Christmas—we cannot afford any similar lapses if we are to force our way into a leading position.

We therefore look to our players to improve their home record at the expense of Sunderland, to whom we extend a cordial welcome this afternoon.

### MID-TABLE

Sunderland stand halfway on the First Division chart, and have already shown a lot of improvement on last season, when they finished in 15th position.

The Wearsiders have yet to win away from home, and they will not thank us for reminding them that their last visit to London—at West Ham last month—ended with an 8-0 defeat.

Sunderland have, however, drawn five of their away matches, and too much

notice should not be taken of their collapse at West Ham. They have picked up a point each from their visits to Leeds, Wolverhampton and Sheffield Wednesday (all 1-1), and at Queen's Park Rangers and Arsenal, where they drew 2-2 and 0-0 respectively.

Sunderland's home record is better than our own. Of the nine matches played at Roker Park, they have won five and drawn two.

The two clubs who have visited Roker and left with both points are Manchester City (4-0) and Leeds (1-0). Newcastle United and Manchester United both held Sunderland to a 1-1 draw on their own ground, but the other five visiting clubs—Ipswich, Southampton, Leicester, Nottingham Forest and Coventry City—were all beaten.

### QUIZ FOR TODAY—Answers on page 13

1. Which Sunderland player conceded an own goal in the League match here last season?
2. Spurs and Sunderland supplied a player each to the England Under-23 team that beat Hungary at Everton last May. Who were they?
3. Who scored Spurs' goal in the 1-1 Sixth Round F. A. Cup match at Sunderland in March, 1961?
4. Spurs defeated Sunderland on this ground in a Fourth Round F. A. Cup-tie in 1950. What was the score?
5. Who scored Spurs' winning goal at Sunderland last season?

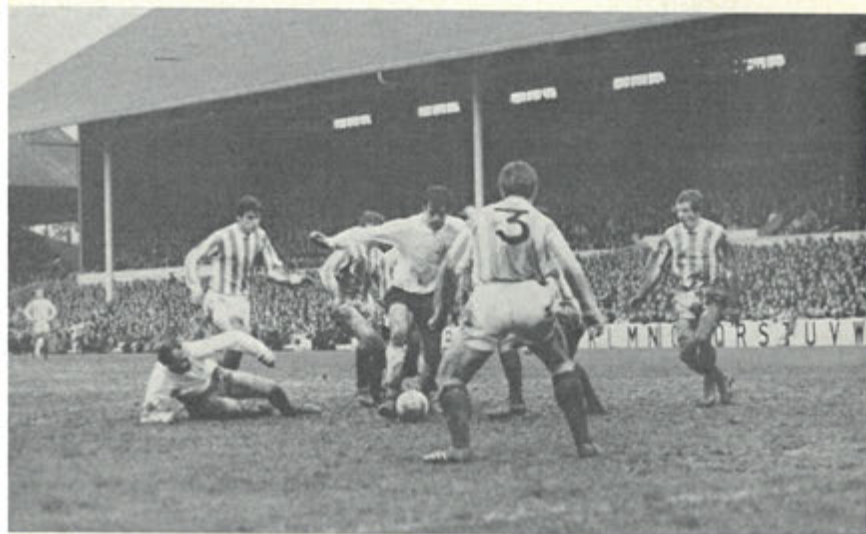


## SPURS v. STOKE CITY



Jimmy Greaves scoring his 200th League goal early in the second half.

*Photo by Central Press Photos Ltd.*



Mike England in possession with Stoke's defenders closing in.

*Photo by Atkins Photos, Tottenham*

## ALAN BROWN

Sunderland's manager is Mr. Alan Brown, who is in his second spell in charge of the Weariders. Mr. Brown, who has also managed Burnley and Sheffield Wednesday, spent his playing career as a centre-half with Huddersfield Town, Burnley and Notts County. A north-easterner from Consett, he was Wednesday's trainer-coach in the early 1950s. When Burnley were beaten in the 1947 F.A. Cup Final, Alan was a member of the team.

## RECORD GATE

Any student of Spurs' history will know that the record crowd for any match on this ground was for a cup-tie against Sunderland before the war.

The attendance figure for that match was 75,038. It was a Sixth Round tie, and the date was 5th March, 1938. Although more than 30 years have since passed, there will be many spectators here today who saw that memorable cup-tie, and perhaps some who made the trip from Sunderland.

Spurs, then in the Second Division, lost the tie by the only goal of the match, scored by Raich Carter. Apart from the gate figure, the match is memorable, however, for the controversy that raged over the goal disallowed to Spurs at the Park Lane end.

Before Carter scored, Colin Lyman, our left-winger, shot from the left wing. The ball finished up in the net, but in dashing up to add the final touch, "Jack" Gibbons handled it.

At first the referee pointed to the centre, but after protests by Sunderland, he gave a free-kick on the grounds that Gibbons had touched the ball before it crossed the line. It was a hair-line decision that made all the difference to Spurs. Heartened by their escape, Sunderland went away to score. Disappointing though it was to Spurs at the time, it was a great match. Here are the teams:

SPURS: Hooper; Ward, Whatley; Buckingham, Rowe, Grice; Sargent, Hall, G. W., Morrison, A. H. Gibbons and Lyman.

SUNDERLAND: Mapson; Gorman, Hall; Thomson, Johnston, Hastings; Duns, Carter, Gurney, Gallacher and Burbanks.

## DID YOU KNOW...

THAT Sunderland maintained continuous membership of the First Division from 1890 to 1958?

THAT Sunderland were formed originally as Sunderland School Teachers' Association F.C.?

THAT in 1949 Sunderland were knocked out of the F.A. Cup by Yeovil Town?

## JIMMY'S RECORD

When Jimmy Greaves scored against Stoke, he became the first player in Spurs' history to reach a total of 200 League goals for the club.

Next on the list to Greaves comes Bobby Smith, whose total of League goals for Spurs was 176, and when Cliff Jones left us for Fulham last month his figure was 134.

In pre-war days George Hunt scored 125 League goals, and Jimmy Dimmock netted exactly 100. A substantial number of the goals scored by Hunt and Dimmock were in Second Division football.

## MAN IN CHARGE

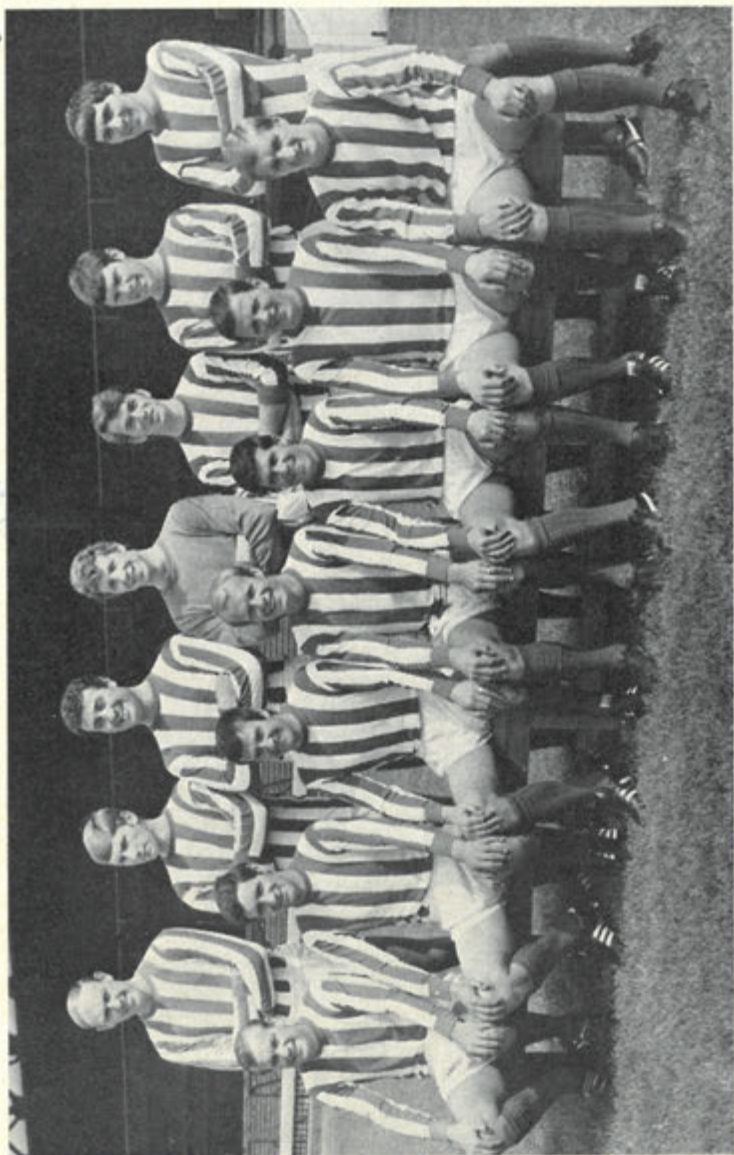
Referee for today is Mr. Norman Burtenshaw of Great Yarmouth.

Mr. Burtenshaw, who was born in Gorleston, took up refereeing 15 years ago after injury had put an end to his playing days. He started in amateur football in Norfolk, and graduated to Football League status via the Eastern Counties League and the Football Combination.

Mr. Burtenshaw is a member of the F.I.F.A. panel of international referees, and has officiated in many big matches. He was a linesman in the 1965 F.A. Cup Final between Leeds United and Liverpool. During the summer he visited Zambia on a refereeing instruction course.

Mr. Burtenshaw is employed in the telephone department of the G.P.O. at Great Yarmouth. His sporting interests are varied, and in addition to football he is keenly interested in athletics, tennis, badminton and cross-country running.





**Sunderland, 1968-69.** Back row, left to right: C. Irwin, C. Todd, C. Hurley, J. Montgomery, C. Suggett, L. Ashurst, I. Porterfield. Front row, left to right: G. Harris, G. Kinnell (now with Middlesbrough), G. Mulhall, C. Palmer, G. Herd, M. Harvey and B. Stuckey.

Photo by "The Sunderland Echo"

## THE MEN OF ROKER...

THE personnel of a football team sometimes changes quickly, and it is likely that less than half the Sunderland team that played us here in the corresponding match last season will be wearing the red-and-white stripes of the Roker Park club this afternoon.

Certain absentees from last season's line-up are half-backs George Kinnell and Jim Baxter, who have since been transferred to Middlesbrough and Nottingham Forest respectively, and centre-forward Neil Martin, signed by Coventry City last February.

Two newcomers who may be in Sunderland's team today are no strangers to White Hart Lane. Wing-half **Calvin Palmer** is the former Stoke City player, who signed in February for Sunderland. A versatile player, he was born at Skegness, and made his name with Nottingham Forest.

### WEMBLEY MEMORY

The other Sunderland newcomer who is familiar to First Division crowds is inside-forward **Gordon Harris**, who was signed from Burnley last January.

Harris, who played against Spurs for Burnley in the F.A. Cup Final at Wembley in 1962, comes from Worksop, and gained a full England cap when he was at Turf Moor.

Palmer and Harris are seasoned performers, but Sunderland may include two young players who have not appeared for them on this ground in the past. They are wing-half **Dick Huntley**, and inside- or centre-forward **Malcolm Moore**.

Huntley made his First Division debut at Everton a fortnight ago. He comes from Hetton-le-Hole in Durham, and is a product of Sunderland's youth scheme.

Moore was born at Silksworth, and first caught the eye as a member of the Seaham Boys team.

### UNDER-23 PLAYER

**Jim Montgomery**, Sunderland's goal-keeper, is an England Youth and Under-23 player. He is a local Sunderland-born player, who graduated through the nursery system at Roker Park.

Right-back **Cecil Irwin** has been an established member of Sunderland's team since the club's Second Division days. He was born at Ashington, and was a first-team player at the age of 16.

**Martin Harvey** is another of Sunderland's best-known players. He made his name as a wing-half, and has played for no other senior club. Harvey is a Belfast man, who has made many appearances for Ireland.

**Colin Todd** is another Sunderland defender who has played for the England Under-23s. He comes from Chester-le-Street, and joined Sunderland immediately on leaving school.

Right-winger **George Herd** is the Scottish international, who was signed from Clyde in 1962. He was born in Glasgow, and played for Queen's Park, the Scottish amateur club, before joining Clyde in 1957.

Winger **Billy Hughes**, who was in Sunderland's team here two seasons ago, is also a Scot. He was born at Coatbridge, and joined the Wearsiders straight from school.

**George Mulhall** is one of the best-known wingers in First Division football, and one of the most experienced. He was born at Aberdeen, and spent nine years with the Aberdeen club before moving to Sunderland in 1963.

### FROM RAITH

**Ian Porterfield**, the wing-half who was signed from Raith Rovers last December, may find a place in the team today. Porterfield is yet another Scot, who was born at Cowdenbeath, and played for Lochore Welfare before joining Raith.

In spite of his long years of service, centre-half **Charlie Hurley** is still a senior player. Hurley, many times capped by Eire, was born in Cork, but at the age of seven months he was brought to England. That makes Joe Kinnear, who left Dublin when he was seven years of age, much more of an Irishman!

Inside-forward **Colin Suggett** is another of Sunderland's own discoveries. He was born at Chester-le-Street, played for England Boys, and has been at Roker since leaving school.



## HALF-TIME SCORES IN OTHER MATCHES

The appended Code corresponds with letters on the Scoring Board thus means the first-named Club has scored 1 and their opponents 0.

A! ★ Not played

A Burnley v. Wolverhampton W.	N Cardiff City v. Derby County
B Chelsea v. Southampton	O Carlisle United v. Fulham
C Coventry City v. Leeds United	P Charlton Athletic v. Hull City
D Everton v. Queen's Park Rangers	Q Crystal Palace v. Blackburn R.
E Manchester Un. v. Ipswich T.	R Huddersfield Town v. Millwall
F Newcastle Un. v. Manchester C.	S Middlesbrough v. Bolton Wand.
G Nottingham Forest v. Arsenal	T Norwich City v. Oxford United
H Sheffield Wednesday v. Liverpool	U Portsmouth v. Aston Villa
J West Bromwich A. v. Stoke City	V Preston North End v. Bristol City
K West Ham Un. v. Leicester City	W Brentford v. Woking
L Birmingham City v. Blackpool	X Cheltenham Town v. Watford
M Bury v. Sheffield United	Y Orient v. Gillingham

## LEAGUE CUP SEMI-FINAL

For the second leg of our Football League Cup Semi-final against Arsenal on this ground on Wednesday, 4th December, kick-off 7.30 p.m., tickets will be on sale here from 10 a.m. on Sunday, 24th November, 1968 as follows:

GROUND at 5s. . . . . Two per person  
SEATS at 12s. . . . . One per person

**THIS IS AN ALL-TICKET MATCH**

### SEASON TICKET HOLDERS

Season-ticket holders can obtain their seats either by personal call at the Office on production of their Football League Cup Semi-final second-leg coupon or by post. Postal applications must be accompanied by the coupon, the correct remittance and a stamped addressed envelope.

WEST STAND Blocks G and M, 12s. Blocks H, J, K, L, 15s.  
EAST STAND Blocks C, D, E, F, G, 15s.

**NO ADDITIONAL SEATS CAN BE SUPPLIED**

Season-ticket holders have until Wednesday, 27th November to claim their seats.

## FORTHCOMING FIXTURES

Monday, 18th November, 1968

## WEST HAM UNITED

London Challenge Cup, Final

Kick-off 7.30 p.m.

Saturday, 23rd November, 1968

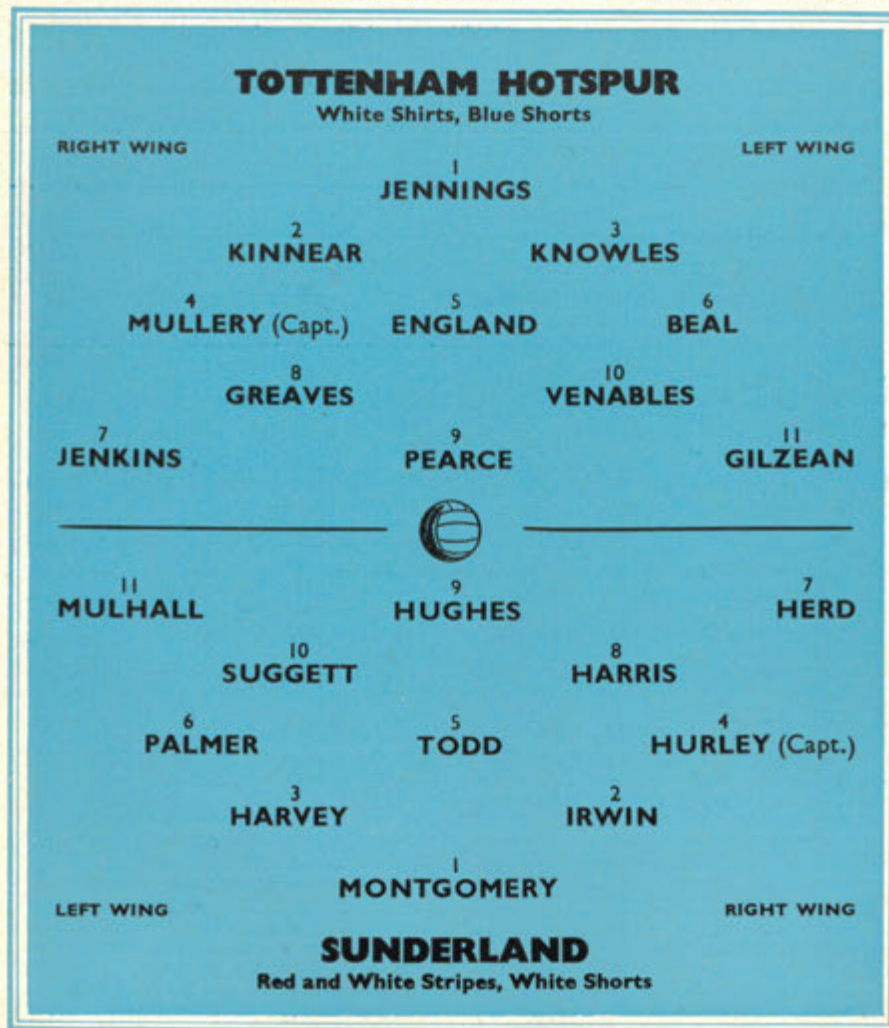
## CARDIFF CITY RESERVES

Football Combination

Kick-off 3 p.m.

## FOOTBALL LEAGUE, DIVISION I

KICK-OFF 3 p.m.



Referee: **Mr. N. C. H. BURTENSHAW**, Norfolk

Linesmen: **Mr. R. R. H. MITCHENER**, Dorset (Red Flag)

**Mr. E. A. READ**, Wilts (Yellow Flag)

Substitutes: (Home Club) \_\_\_\_\_ (Visiting Club) \_\_\_\_\_



## MAINLY DEFENSIVE

Leeds United 0, Spurs 0

As the score-line suggests our drawn match at Leeds last Saturday was mainly of a defensive nature. As was to be expected, it was a hard gruelling game, and there is some significance in the fact that Leeds have conceded only three goals in home League matches this season.

In the circumstances it was satisfying for Spurs to come away from Leeds with a point. Our previous four visits had all ended in defeat.

The tactics we adopted proved successful, but it was a game in which there were no really good scoring chances. Raids by either side were only spasmodic, but Spurs had one narrow escape when Terry Cooper, the Leeds back, struck the crossbar.

This was our first goalless draw of the season.

Team: Jennings; Kinnear, Knowles; Mullery, Collins, P., Beal; Pearce, Greaves, England, Venables and Gilzean. Tony Want stood by as substitute.

Attendance: 38,995.

## ANOTHER WIN

Spurs Res. 5, Oxford United Res. 0

The Reserves pulled off another convincing win by 5-0 at home to Oxford United on Saturday in an entertaining match.

The first goal was scored by Steve Perryman, who cracked in his shot on the half-volley from nearly 25 yards. Billy Mail added the second before half-time from a cross by Dennis Bond, and the third goal, scored from the penalty spot by Ray Bunkell after he had been brought down himself, gave Spurs a comfortable lead after the change-over.

Bunkell scored Spurs' fourth after good work by Bond, and the last goal was headed through by Mail after a shot by Roy Woolcott had been beaten out. Team: Skeet; Cutbush, Collins, J.; T. Naylor, Pratt, Bond; Pitt, Bunkell, Perryman, Woolcott and Mail.



Ray Bunkell

## "A" TEAM DRAW

Spurs "A" 2, West Ham United "A" 2

The "A" team were held to a 2-2 draw by West Ham at Cheshunt in the Metropolitan League on Saturday. All four goals were scored in the first half, and at one stage Spurs were a goal behind.

Terry Shanahan gave Spurs the lead after only two minutes' play, but after West Ham had netted twice, John Gilroy equalised from a pass by Ray Clarke.

Team: Daines; Holder, P., Bish; A. Bennett, Edwards, Henry; Shoemark, Neighbour, Clarke, Gilroy and Shanahan.

Second-half goals by Steve Pitt and John Pratt gave Spurs a 2-0 win over Cambridge University on the Cambridge City ground on Tuesday. Team: Skeet; Collins, J., Bish; Cutbush, Pratt, Henry; Shoemark, Bunkell, Gilroy, Pitt and Neighbour.

## LEICESTER BOOKINGS

Supporters planning to watch our away match with Leicester City on Boxing Day may wish to note that seats at 12s. 6d. and 10s. will be available for purchase four weeks in advance of the date. Applications must be made direct to the Leicester Club at Filbert Street, Leicester.

Unreserved seats will also be available through the turnstiles on the day of the match only.

## FLASHBACK

### TO 20 YEARS AGO THIS WEEK-END

AFTER a goalless first half in a Second Division match with Barnsley on this ground, Spurs struck scoring form with four great goals. Les Bennett netted the first, and Eddie Baily increased the lead with a shot that was too hot for Barnsley goalkeeper Pat Kelly to stop.

Spurs kept up the pressure, and Baily hit a brilliant third. Our fourth goal was scored by Len Duquemin, following an exchange of passes with Baily. George Robledo scored a late consolation goal for Barnsley.

Team: Ditchburn; Tickridge, Willis; Nicholson, Buckingham, Burgess; Cox, Bennett, Duquemin, Baily and Jones.

## Know the Game

### LAW 8

Did you notice that Referee Pat Partridge ordered the kick-off to be taken a second time in our last home match against Stoke City?

Stoke kicked off, but a Spurs player encroached into the centre circle before David Herd, Stoke's centre-forward, first touched the ball.

Law 8 lays down that "every player shall be in his own half of the field and every player of the team opposing that of the kicker shall remain not less than 10 yards from the ball until it is kicked off". As the radius of the centre circle is 10 yards from the centre spot, any opposing player encroaching into the circle is infringing the Law.

For any infringement of this Law, the kick-off shall be retaken, except in the case of the kicker playing the ball again before it has been touched or played by another player.

For this offence, an indirect free-kick shall be taken by a player of the opposing team from the place where the infringement occurred.

## TRAVEL

For our away match with Southampton next Saturday, British Rail will issue cheap day return tickets at 26s. Passengers may travel outward and return on any train, and the following services are suitable for connection with the 3 p.m. kick-off:

### FORWARD

Waterloo . . . . .	dep. 11.43	12.30
Southampton . . . . .	arr. 13.33	13.40

### RETURN

Southampton . . . . .	dep. 17.12	17.38
Waterloo . . . . .	arr. 18.59	19.04

In connection with this match Henry Coaches will operate a service at a return fare of 15s. Coaches will leave Whitehall Street (opposite ground) at 9.45 a.m. and No. 1 Broad Lane, Tottenham, N.15 at 10 a.m.

In the Second Round of the F.A. Youth Cup we have been drawn away to Millwall.

## FOR THE RECORD

WEDNESDAY, 30TH OCTOBER

Spurs 1, Southampton 0

(Football League Cup, Fifth Round)

Team: Jennings; Kinnear, Knowles; Mullery, England, Beal; Bond (sub. Collins, P.), Greaves, Pearce, Venables and Gilzean.

Goalscorer: Collins, P.

SATURDAY, 2ND NOVEMBER

Spurs 1, Stoke City 1

(Football League, Division 1)

Team: Jennings; Kinnear, Knowles; Mullery, England, Beal; Jenkins (sub. Collins, P.), Greaves, Pearce, Bond and Gilzean.

Goalscorer: Greaves.

Southampton Res. 0, Spurs Res. 1

(Football Combination)

Team: Daines; Cutbush, Collins, J.; Evans (sub. Clarke), Pratt, Want; Johnson, Bunkell, Perryman, Woolcott and Mail.

Goalscorer: Woolcott.

Spurs "A" 1, Metropolitan Police 0

(Met. League Autumn Shield)

Team: Skeet; Holder, P., Bish; T. Naylor, A. Bennett, Henry; Shoemark, Neighbour, Gilroy, Pitt and Shanahan.

Goalscorer: Pitt.

TUESDAY, 5TH NOVEMBER

Oxford University 1, Spurs 3

(Friendly)

Team: Skeet; Collins, J., Bish; Cutbush, Pratt, Henry; Johnson, Pitt, V. Cogger, Bunkell and Shoemark.

Goalscorer: V. Cogger (3).

In last Saturday's Reserve programme Les Charker was incorrectly named as a goalscorer against Harpenden in the F.A. Youth Cup match. Our fifth goal was scored by Steve Perryman, who played inside-left with Charker wearing the No. 8 shirt.

We are pleased to report that Martin Chivers is making good progress after the serious knee injury he sustained against Nottingham Forest in September.

For the past fortnight he has been attending the Royal National Orthopaedic Hospital at Stanmore for physiotherapy, and has been allowed to take off the back splint while resting at his Epping home.



## SPURS v. SOUTHAMPTON



Peter Collins heading the goal that won us a place in the Semi-final of the Football League Cup.  
Photo by Associated Newspapers Ltd.



Mike England heads the ball away, watched by Frank Saul, our former player.

Photo by "Southern Evening Echo", Southampton

## APPEARANCES AND GOALSCORERS

### League, Division 1 (League Cup in brackets)

Jennings . . . 18 (4)	Chivers . . . 10 (1)
Beal . . . 18 (4)	Pearce . . . 9 (3)
Mullery . . . 18 (4)	Robertson . . . 8 (1)
Greaves . . . 18 (4)	Jones . . . 6 (2)
Kinnear . . . 17 (4)	Collins, P. . . 4 (1)
Gilzean . . . 17 (4)	Want . . . 3
Venables . . . 16 (4)	Jenkins . . . 3
England . . . 16 (3)	Bond . . . 2 (2)
Knowles . . . 15 (3)	

Substitutes.—League: Robertson 3; Pearce, Knowles, Jones and Collins, P. 1 each. League Cup: Collins, P. and Bond 1 each.

Goalscorers in League: Greaves 15; Jones and Gilzean 5 each; Chivers 3; England, Robertson, Pearce and Mullery 1 each.

Goalscorers in League Cup: Greaves 4; Chivers 3; Pearce 2; Jones, Venables and Collins, P. 1 each.

### Combination Cup and League (London Challenge Cup in brackets)

Pratt . . . 16 (3)	Bond . . . 9 (3)
Woolcott . . . 16 (3)	Evans . . . 9 (3)
Skeet . . . 15 (3)	Pearce . . . 7
Johnson . . . 14 (3)	Perryman . . . 4
Mail . . . 14 (3)	Knowles . . . 1 (1)
Bunkell . . . 14 (3)	T. Naylor . . . 1
Want . . . 12 (2)	Jones . . . 1
Collins, J. . . 12 (1)	Pitt . . . 1
Cutbush . . . 10 (3)	Kinnear . . . 1
Hoy . . . 9	Daines . . . 1
Collins, P. . . 9 (2)	

Substitutes in Combination: Evans, Clarke and Charker 1 each. In Challenge Cup: Pitt 1.

Goalscorers in Combination Cup and League: Woolcott 17; Mail 9; Pearce 8; Bunkell 6 (3 pens.); Johnson 4; Perryman, Want (pen.) and Collins, P. 1 each; Gillingham 2 own goals.

In Challenge Cup: Woolcott 7; Bond 2; Bunkell (pen.), Want (pen.) and Johnson 1 each.

### Metropolitan League, Autumn Shield and Challenge Cup

Henry . . . 17	Perryman . . . 13
Pitt . . . 16	Neighbour . . . 13
T. Naylor . . . 16	Holder, P. . . 12
Daines . . . 16	Shoemark . . . 11
Gilroy . . . 14	A. McCulloch . . . 9
Bish . . . 14	Evans . . . 7

Cutbush . . . 6	Edwards . . . 2
Collins, J. . . 5	Bunkell . . . 2
A. Bennett . . . 5	Woolcott . . . 1
Shanahan . . . 4	Skeet . . . 1
Clarke . . . 3	

Substitutes: Clarke, Holder, P. and Gilroy 1 each.

Goalscorers: Gilroy 10; Pitt (4 pens.) and A. McCulloch 9 each; Neighbour 4; T. Naylor 3; Evans and Shanahan 2 each; Perryman, Bunkell, Woolcott, Clarke, Henry, Shoemark and Collins J. 1 each; Bedford Town own goal.

## DEVELOPMENT SOCIETIES

**DAILY DRAW.** The results of the draw run by the Spurs Development Society No. 1 for the week ended 9th November (Week No. 4) were as follows:

	£10	£5
Monday . . . . .	3421	1019
Tuesday . . . . .	3229	0349
Wednesday . . . . .	6945	1247
Thursday . . . . .	1156	5886
Friday . . . . .	1247	6102
Saturday . . . . .	1376—£75	

Tickets, priced 1s. each, can be obtained from the Pools Office in the main entrance or through agents.

### NEW AGENTS REQUIRED RING 808-0281

**"GOAL-TIME".** The following were the winning times in the competitions held by the Development Society No. 2:

#### 30th November—Southampton

1st Goal . . . 82 min. 31 sec. . . £50

The second prize of £25 and the third prize of £10 was shared between the holders of the three "No Goal" tickets.

#### 2nd November—Stoke City

1st Goal . . . 61 min. 54 sec. . . £50

2nd Goal . . . 63 min. 00 sec. . . £25

The third prize of £10 was shared between the holders of the three "No Goal" tickets.

These competitions are held on home first team matches only, and tickets, priced 1s. each, can be obtained from the officially-appointed sellers.

## ANSWERS TO QUIZ

1. Colin Todd.
2. Colin Todd (Sunderland) and Martin Chivers (Spurs).
3. Cliff Jones.
4. Spurs won 5-1.
5. Cliff Jones.



# FOOTBALL LEAGUE—DIVISION I

## FIRST TEAM FIXTURES

Date	Opponents	Ground	For	Ag.
Wed. July 31	Glasgow Rangers (Friendly)	Home	3	1
Sat. Aug. 3	F.K. Austria (Friendly)	Away	2	2
Sat. " 10	Arsenal	Home	1	2
Sat. " 17	Everton	Away	2	0
Wed. " 21	West Bromwich Albion	Home	1	1
Sat. " 24	Sheffield Wednesday	Home	1	2
Wed. " 28	Manchester United	Away	1	3
Sat. " 31	Chelsea	Away	2	2
Wed. Sept. 4	Aston Villa (League Cup, 2nd Round)	Away	4	1
Sat. " 7	Burnley	Home	7	0
Sat. " 14	West Ham United	Away	2	2
Tues. " 17	Coventry City	Away	2	1
Sat. " 21	Nottingham Forest	Home	2	1
Wed. " 25	Exeter City (League Cup, 3rd Round)	Home	6	3
Sat. " 28	Newcastle United	Away	2	2
Sat. Oct. 5	Leicester City	Home	3	2
Wed. " 9	Manchester United	Home	2	2
Sat. " 12	Manchester City	Away	0	4
Wed. " 16	Peterborough Un. (League Cup, 4th Rd.)	Home	1	0
Sat. " 19	Liverpool	Home	2	1
Sat. " 26	Ipswich Town	Away	1	0
Wed. " 30	Southampton (League Cup, 5th Round)	Home	1	0
Sat. Nov. 2	Stoke City	Home	1	1
Sat. " 9	Leeds United	Away	0	0
Sat. " 16	(1) Sunderland	Home	1	1
Wed. " 20	Arsenal (League Cup, Semi-final, 1st Leg)	Away	1	1
Sat. " 23	Southampton	Away	1	2
Sat. " 30	Queen's Park Rangers	Home	1	1
Wed. Dec. 4	Arsenal (League Cup, Semi-final, 2nd Leg)	Home	1	1
Sat. " 7	(2) Wolverhampton Wanderers	Away	1	1
Sat. " 14	Manchester City	Home	1	1
Sat. " 21	Liverpool	Away	1	1
Thur. " 26	Leicester City	Away	1	1
Sat. " 28	Ipswich Town	Home	1	1
1969				
Sat. Jan. 4	(3) Walsall	Away	1	0
Sat. " 11	Stoke City	Away	1	0
Sat. " 18	Leeds United	Home	1	0
Sat. " 25	(4) Wolverhampton W.	Home	1	0
Sat. Feb. 1	Sunderland	Away	1	0
Sat. " 8	(5) Southampton	Home	1	0
Sat. " 15	Queen's Park Rangers	Away	1	0
Sat. " 22	Wolverhampton Wanderers	Home	1	0
Sat. Mar. 1	(6) Arsenal	Away	1	0
Sat. " 8	Everton	Home	1	0
Sat. " 15	Sheffield Wednesday	Away	1	0
Sat. " 22	(S.F.) Chelsea	Home	1	0
Sat. " 29	Burnley	Away	1	0
Wed. Apr. 2	Newcastle United	Home	1	0
Fri. " 4	Coventry City	Home	1	0
Mon. " 7	West Bromwich Albion	Away	1	0
Sat. " 12	Nottingham Forest	Away	1	0
Sat. " 19	West Ham United	Home	1	0
Sat. " 26	F.A. Cup Final			

© Copyright The Football League Limited 1968

# FOOTBALL COMBINATION

## RESERVE TEAM FIXTURES

Date	Opponents	Ground	For	Ag.
Sat. Sept. 7	*Fulham	Away	0	0
Wed. " 11	*Gillingham	Home	3	0
Sat. " 14	*Fulham	Home	6	0
Wed. " 18	*Crystal Palace	Away	3	1
Sat. " 21	*Ipswich Town	Away	3	1
Sat. " 28	*Ipswich Town	Home	2	1
Mon. " 30	Dagenham (Lon. Challenge Cup, 1st Rd.)	Home	1	0
Sat. Oct. 5	Bristol City	Away	4	1
Sat. " 12	Gillingham	Home	2	0
Mon. " 14	Millwall (Lon. Challenge Cup, 2nd Rd.)	Home	8	2
Sat. " 19	Leicester City	Away	2	0
Sat. " 26	Luton Town	Home	8	0
Mon. " 28	Enfield (Lon. Challenge Cup, S/Final)	Home	3	1
Sat. Nov. 2	Southampton	Away	1	0
Sat. " 9	Oxford United	Home	5	0
Mon. " 18	West Ham U. (Lon. Challenge Cup, Final)	Home	2	2
Sat. " 23	Cardiff City	Home	3	0
Sat. " 30	Fulham	Away		
Sat. Dec. 7	Northampton Town	Home		
Sat. " 14	Queen's Park Rangers	Away		
Sat. " 21	Reading	Home		
Sat. " 28	Ipswich Town	Away		

1969  
Sat. Jan. 4 Plymouth Argyle  
© Copyright The Football League Limited 1968

\* Combination Cup

## 'A' TEAM—METROPOLITAN LEAGUE

Date	Opponents	Ground	For	Ag.
Sat. Sept. 14	Sheppey United	Away	2	0
Wed. " 18	West Ham United	Away	3	4
Sat. " 21	†Wimbledon	Away	4	1
Wed. " 25	*Bletchley	Away	3	1
Sat. " 28	Bury Town	Home	0	1
Sat. Oct. 5	Bedford Town	Home	8	1
Sat. " 12	*Bletchley	Home	0	3
Sat. " 19	Arsenal	Home	4	0
Sat. " 26	Romford	Home	4	4
Sat. Nov. 2	*Metropolitan Police	Home	1	0
Sat. " 9	West Ham United	Home	2	2
Sat. " 16	Wellingborough Town	Home		
Sat. " 23	Cray Wanderers	Away		
Sat. Dec. 7	Hatfield Town	Home		
Sat. " 14	Chelmsford City	Home		
Sat. " 21	Braintree & Crittall Athletic	Home		
Sat. " 28	Bletchley	Away		

\* Autumn Shield

† Challenge Cup, 1st Round