



FOOTBALL LEAGUE—DIVISION ONE

TOTTENHAM HOTSPUR

v.

CHELSEA

Official Programme

Price SIXPENCE

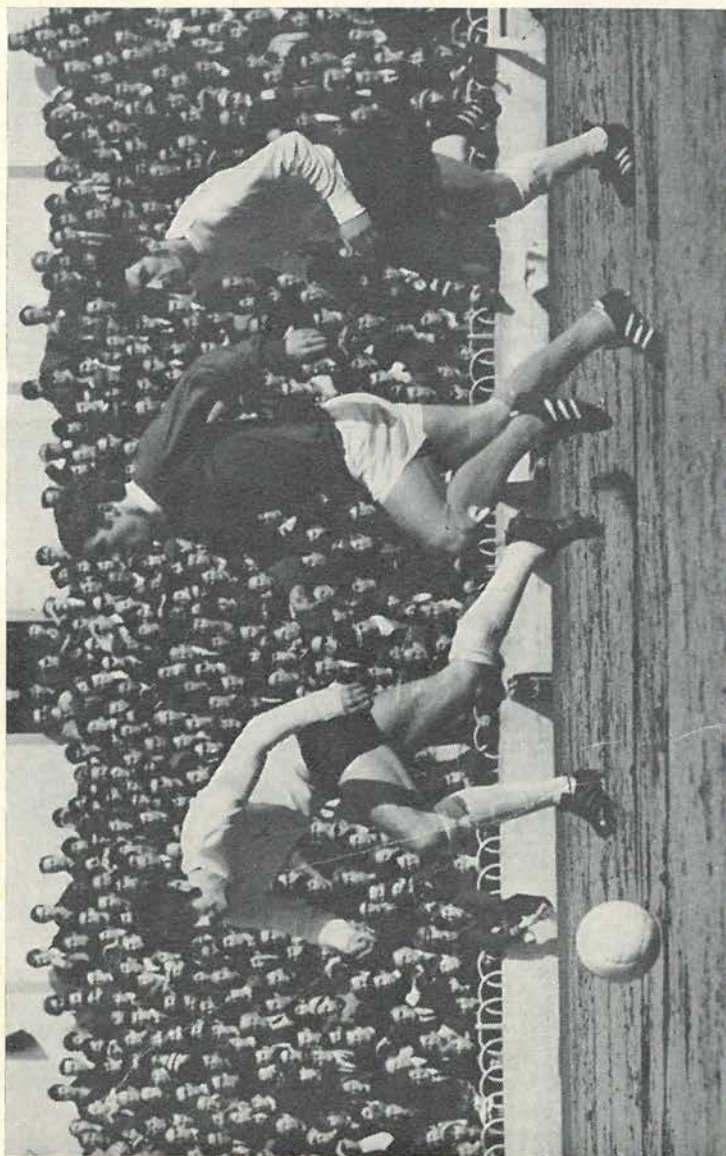


SEASON 1968–69

Vol. 61 No. 49

Saturday, 22nd March, 1969

KICK-OFF 3 p.m.



Spurs v. Everton. Peter Collins, Alan Ball (Everton) and Jimmy Pearce in midfield pursuit of the ball.

Photo by Atkins Photos, Tottenham

TOTTENHAM HOTSPUR

FOOTBALL AND ATHLETIC COMPANY LIMITED

Chairman: FREDK. WALE Vice-Chairman: S. A. WALE

Directors: C. F. COX, A. RICHARDSON, H. G. S. GROVES

Manager: W. E. NICHOLSON Secretary: G. W. JONES Medical Officer: Dr. BRIAN CURTIN

League Champions: 1950-51, 1960-61 F.A. Cup Winners: 1901, 1921, 1961, 1962, 1967
Winners of European Cup Winners Cup: 1963

COPYRIGHT

ALL RIGHTS RESERVED

COMMENT

IN a season in which so many postponements and fixture alterations have taken place, this is one of the few Saturdays when we would gladly have put off the scheduled match for an engagement in today's Semi-final stage of the F.A. Cup.

Chelsea, to whom we extend our usual cordial welcome, will share our sentiments in this respect. When we were losing by the only goal of the match on Manchester City's ground in the Sixth Round, Chelsea were also suffering their Cup knock-out at the hands of West Bromwich Albion.

We therefore stand in a somewhat similar position to Chelsea, although our West London rivals stand above us on the League chart. For neither club is there the prospect of a place in the honours list, and the season's remaining task is to gather as many points as possible and to provide the highest level of soccer entertainment.

In these circumstances it is fortunate that we are able to stage such an attractive match this afternoon. The visit of Chelsea is always one of the big attractions of the season here at White Hart Lane, and the good form of the Stamford Bridge team in recent matches adds interest to today's game.

HIGHER PLACING?

Last season Chelsea finished sixth in the First Division, one place above Spurs. This season they aim at a higher placing, and their record since that Cup defeat by

West Bromwich underlines the nature of the task facing our players today.

Chelsea bounced back with a win over Stoke City, and then gained a measure of revenge for their Cup knock-out by winning 3-0 at West Bromwich. Their last two matches, both at home, have resulted in victories over Coventry City (2-1) and Manchester United (3-2).

A glance at Chelsea's record shows they are far from goal-shy away from home. Away from Stamford Bridge they have scored no fewer than 29 League goals, three more than they have conceded on opponents' grounds.

In addition to West Bromwich, Chelsea have beaten six clubs on their own grounds in the League. Their victims were Manchester United and Queen's Park Rangers (both 4-0), Leicester

QUIZ FOR TODAY—Answers on page 13

1. Which Chelsea player scored from a penalty against Spurs at Stamford Bridge last September?
2. One of the most famous Chelsea players of all time made his League debut on this ground against Spurs in August, 1957. His name?
3. Who was the forward transferred from Chelsea to Spurs in December, 1959?
4. A former Chelsea goalkeeper played against Spurs in the F.A. Cup last month. Can you name him and his present club?
5. Who scored the goals in the F.A. Cup Final between Spurs and Chelsea in 1967?



Spurs v. Everton. Alan Mullery gives Everton's defence an anxious moment.

Photo by Atkins Photos, Tottenham

(4—1), Ipswich (3—1) and Coventry and Arsenal (both 1—0). They have also picked up away points from drawn matches with Sheffield Wednesday and Wolverhampton Wanderers. Both matches ended 1—1.

In any comparison between the records of Spurs and Chelsea, it should be noted that we have played three matches less.

TOP SCORER

Bobby Tambling leads Chelsea's goal-scoring list in the League with 16 out of the total of 62. Tommy Baldwin and Alan Birchenall have also reached double figures with 13 and 10 respectively.

The remaining 23 have been netted by Peter Osgood 9; David Webb 5; Peter Houseman and Ian Hutchison 3 each; John Hollins and John Boyle 1 each; and an own goal by Bill Baxter of Ipswich.

DID YOU KNOW . . .

THAT Chelsea have never won the F.A. Cup?

THAT Chelsea have made nine appearances in the Semi-finals of the F.A. Cup?

THAT Chelsea's ground stands on the site of an old market garden?

MAN IN CHARGE

Referee for today is Mr. Jack Taylor of Wolverhampton, one of the most experienced officials on the Football League List.

He graduated to the top flight via the Birmingham League, and had played in local amateur football before taking up refereeing. That was in 1949, and he has been on the League List over 11 years.

Mr. Taylor has refereed matches in numerous countries, including South America, and was a member of the 1966 World Cup panel. He was in charge of the 1966 F.A. Cup Final between Everton and Sheffield Wednesday, the 1962 F.A. Amateur Cup Final between Crook Town and Hounslow Town, and has refereed two Irish Cup Finals.

A past president of the Football League Referees' and Linesmen's Association, Mr. Taylor is a master butcher by profession.

CHELSEA CHIEF

Mr. David Sexton, who was appointed manager of Chelsea in October, 1967, has had a varied and colourful career. An inside or centre-forward in his playing days, Mr. Sexton started his career with Chelmsford City. His first League club was Luton Town, who transferred him to West Ham United in 1953.

Chelsea's chief also played for Orient, Brighton and Crystal Palace before injury finished his career. He has since coached his present club, Fulham and Arsenal, and also had a spell as Orient's manager. Mr. Sexton has therefore served no less than six London clubs.

In passing

Looking ahead . . . we have fixed a match away to Glasgow Rangers on Monday, 4th August, which is a Bank Holiday in Scotland.

When Chelsea were founded in 1905, their colour was light blue, not their present royal blue.

Ken Hancock is the only member of Spurs' playing staff who has performed in all four divisions of the League.

In the course of 65 League meetings, Spurs and Arsenal have each scored 112 goals. We hope to edge in front on Monday evening.

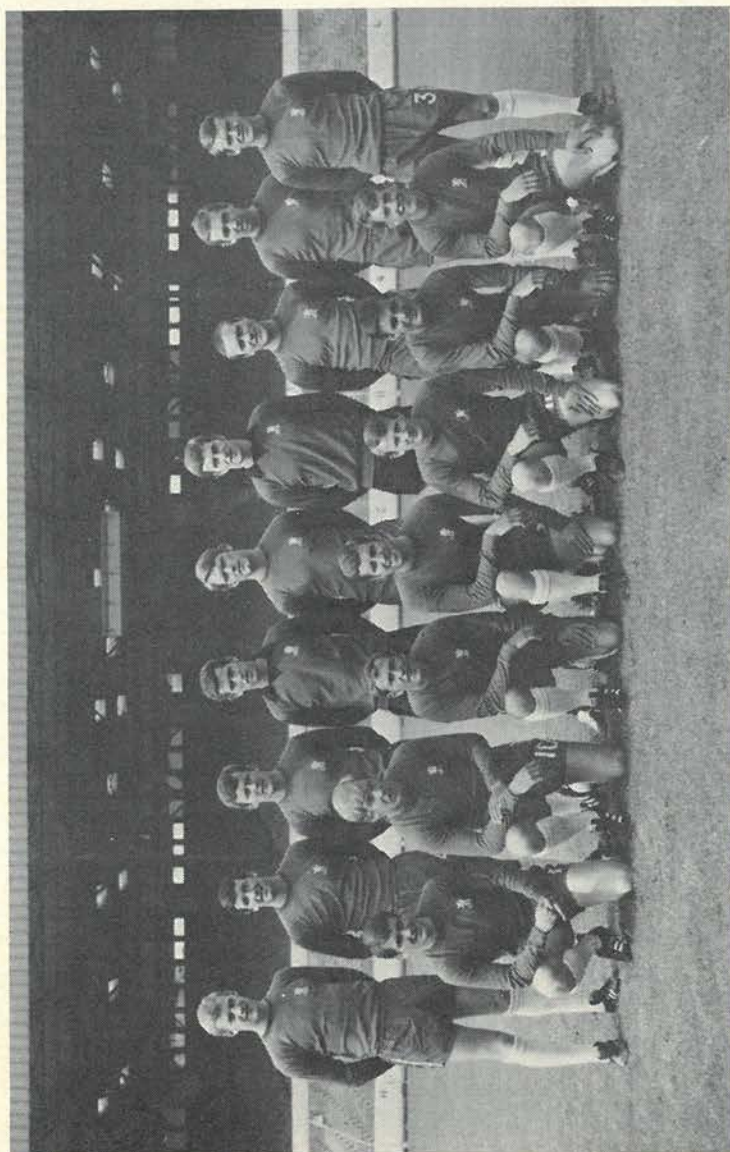
Since joining us from Queen's Park Rangers, Roger Morgan estimates he has saved an hour and a half driving time daily from his Waltham Abbey home . . . and a lot of petrol.

When we visited Chelsea in August, the gate figure was 48,472.

Mike England will captain Wales against West Germany in Frankfurt on Wednesday.

Mr. Dave Sexton, Chelsea's manager, took the opportunity of watching us play Ipswich on Tuesday evening.

Chelsea's last win on this ground was by 2—1 in February 1964.



Chelsea, 1968-69. Back row, left to right: J. Thomson (now Burnley), J. Boyle, J. Hollins, P. Bonetti, D. Webb, T. Hughes, R. Harris, M. Hinton, E. McCreadie. Front row, left to right: C. Cooke, A. Birchenall, T. Baldwin, P. Osgood, P. Houseman, R. Tambling, S. Houston.

Photo: Copyright Chelsea F.C.

MEN OF CHELSEA...

CHELSEA's team today may include four players who have joined the club since their last visit to this ground.

In fact, it was less than a fortnight after we had beaten Chelsea here last season that they signed inside-forward **Alan Birchenall** from Sheffield United.

Birchenall is, in fact, a Londoner. He was born at East Ham, but his family moved to Nottingham when he was only five years old, and it was in Midland football that he developed the skill that caught the eye of Sheffield United.

He had a spell as a young amateur with Notts County, but later played for Stamford, the Lincolnshire club, and Thorneywood Athletic, a Nottingham amateur club.

FROM FULHAM

Centre-half **John Dempsey** is a much more recent Chelsea signing. He was signed from the rival Fulham club towards the end of January, and was in the Cottagers' team, wearing the No. 3 shirt, when they held us to a draw on this ground last season.

Dempsey was born in London, but is an Eire international by parental qualification.

Ian Hutchinson, who may figure in Chelsea's attack, was signed from Cambridge United, the Southern League club, last July. Derby-born Hutchinson had the galling experience of having his first goal in big football, against Preston in the F.A. Cup, nullified by the subsequent failure of Chelsea's floodlights, and the abandonment of the match.

EAST LONDONER

Full-back **David Webb** was secured by Chelsea from Southampton in February, 1968. He is an East Londoner from West Ham, and was an amateur with the Hammers when he was 15.

He made the League grade with Orient, and was transferred to Southampton in March, 1966.

Goalkeeper **Peter Bonetti** ranks with the best players in his position in the country. Bonetti, a full English international, was born at Putney, but has lived in Sussex for many years.

Another international in Chelsea's

defence is full-back **Eddie McCreadie**, who has played for Scotland. A Glasgow man, McCreadie joined Chelsea from East Stirling in 1962.

Half-back **John Hollins**, who has played for England, became a full professional with Chelsea in 1963. He comes from Guildford, and is a younger brother of Dave Hollins, the Mansfield and former Welsh international goalkeeper.

HACKNEY BOY

Ron Harris, Chelsea's captain and full-back, is a Hackney boy. Ron, who is a younger brother of Allan Harris, former Chelsea back, and now with Queen's Park Rangers, has been a professional at Stamford Bridge since 1961. He has played for the England Under-23 team.

John Boyle, who wore the No. 10 shirt in the corresponding match last season, is a versatile performer. He was born at Motherwell, and after developing in Chelsea's junior ranks he signed as a professional in August, 1964.

Bobby Tambling hit the headlines only last week, when he scored his 200th goal for Chelsea in the League match with Coventry City at Stamford Bridge.

Tambling is a full English international, who joined Chelsea as a junior after winning seven schoolboy international caps. He was born at Storrington in Sussex.

ANOTHER LOCAL

Winger **Peter Houseman** is another of Chelsea's own local discoveries. He was born at Battersea, and graduated through the junior ranks to professional status in 1962. He made his League debut in a home match against Sheffield United a year later.

Peter Osgood is being used mainly in a midfield capacity this season, and by all accounts is making a big success of his new role. Osgood comes from Windsor, and has been a professional with Chelsea since September, 1964. He has made a number of appearances for the England Under-23 team.

Chelsea's team against Manchester United last Saturday was: Bonetti; Webb, McCreadie; Hollins, Dempsey, Harris; Boyle, Tambling, Hutchinson, Osgood and Houseman.

HALF-TIME SCORES IN OTHER MATCHES

The appended Code corresponds with letters on the Scoring Board thus means the first-named Club has scored 1 and their opponents 0.

A^o ★ Not played

A West Bromwich v. Leicester City	N Fulham v. Millwall
B Everton v. Manchester City	O Huddersfield T. v. Carlisle Un.
C Coventry City v. Burnley	P Middlesbrough v. Hull City
D Liverpool v. Leeds United	Q Oxford United v. Derby County
E Manchester Un. v. Sheffield Wed.	R Sheffield Un. v. Bolton Wand.
F Newcastle Un. v. Sunderland	S Brighton & Hove A. v. Barrow
G Queen's Park R. v. Arsenal	T Hartlepool v. Reading
H Stoke City v. Wolverhampton W.	U Luton Town v. Gillingham
J Blackburn Rovers v. Bristol City	V Northampton Town v. Walsall
K Blackpool v. Aston Villa	W Orient v. Southport
L Bury v. Norwich	X Plymouth Argyle v. Swindon T.
M Charlton A. v. Crystal Palace	Y Aldershot v. Notts County

TRAVEL

For our away match with Burnley next Saturday, British Rail will issue return tickets at a fare of 66s. (booked services only).

Suitable services for the 3 p.m. kick-off are as follow:

FORWARD

Euston	dep.	09.05
Preston	arr.	12.35
Preston	dep.	12.48
Burnley (Central)	arr.	13.44

RETURN

Burnley (Central)	dep.	17.51	18.21
Preston	arr.	18.46	19.16
Preston	dep.	19.02	19.40
Euston	arr.	22.45	22.55

Refreshments available in each direction between Euston and Preston.

Henry Coaches will operate a service at a return fare of 26s. Coaches will leave No. 1 Broad Lane, N.15 at 7.15 a.m. and Whitehall Street (opposite ground) at 7.25 a.m. For enquiries telephone Tottenham 0661.

ANOTHER DERBY

Just a reminder that we face another big London derby on Monday evening, when we play off our postponed League match with Arsenal at Highbury.

As Arsenal beat us here 2—1 in the opening League match of the season, and also defeated us by the narrowest of margins in the Semi-final of the Football League Cup, we have something to avenge.

FORTHCOMING FIXTURES

Saturday, 29th March, 1969

ARSENAL RESERVES

Football Combination

Kick-off 3 p.m.

Wednesday, 2nd April, 1969

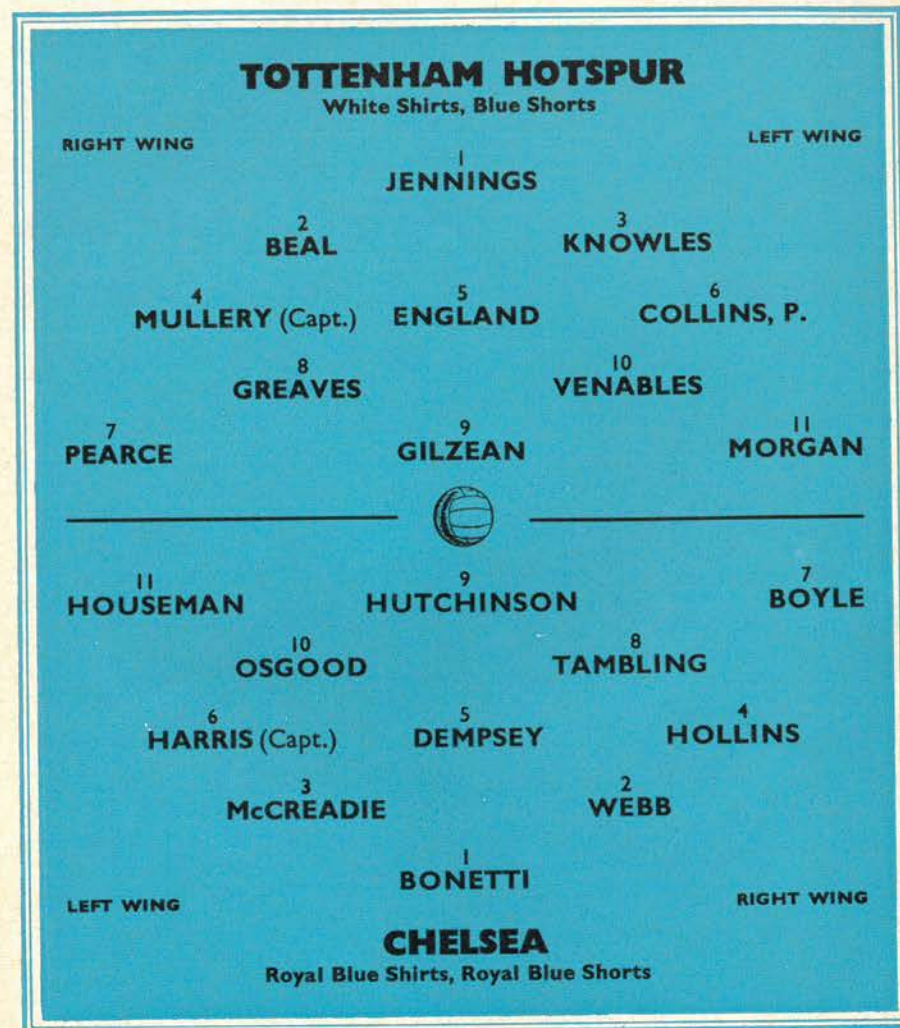
NEWCASTLE UNITED

Football League, Division I

Kick-off 7.30 p.m.

FOOTBALL LEAGUE, DIVISION I

KICK-OFF 3 p.m.



Referee: Mr. J. K. TAYLOR, Staffs.

Linesmen: Mr. R. C. CRABB, Devon (Red Flag)

Mr. T. P. BOSI, Staffs (Yellow Flag)

Substitutes: (Home Club)..... (Visiting Club).....

ANOTHER DRAW

Spurs 2, Ipswich Town 2

Our performance in dropping a home point to Ipswich on Tuesday evening was in keeping with the dismal weather. It was the seventh draw in our last eight League matches, and four of these have been in home matches. In the course of those eight matches, the only deviation from the drawing habit was our 3-2 home win over Queen's Park Rangers.

We cannot complain over the loss of a point to Ipswich. The Suffolk team gained in confidence as the game progressed, and only a spectacular goal-line clearance by Philip Beal, in which he conceded a corner, prevented Ipswich from scoring a third goal nine minutes from the end.



Philip Beal

After Alan Gilzean had headed narrowly over, and goalkeeper David Best had saved well from Jimmy Greaves in the opening minutes, Ron Wigg took full advantage of a lapse in our defence to put Ipswich in front.

HALF-TIME LEAD

Our prospects brightened when a foul on Gilzean brought us a penalty-kick. Greaves slammed home the kick with ease to register his 31st League and Cup goal of the season, and shortly before half-time we took the lead.

Gilzean, who had moved out to the left, turned the ball back for Cyril Knowles to spoon a deceptive dipping shot into the Ipswich net.

Terry Venables left the field with a back injury just after half-time, and was replaced by Neil Johnson, and we must face the fact that we never clicked in the second half.

Pat Jennings saved from Peter Morris, and Colin Viljoen flicked the ball just over before Derek Jefferson equalised with a long-range shot midway through the half.

It was our 15th drawn match in the League this season. If today's match ends in a draw we will equal the record number of drawn League matches by the club in one season. That was in season

1948-49, when we drew 16 Second Division matches.

SPURS: Jennings; Beal, Knowles; Mullery, England, Collins, P.; Pearce, Greaves, Gilzean, Venables (sub. Johnson) and Morgan.

IPSWICH: Best; Mills, Houghton; Morris, Baxter, Jefferson; Hegan, Viljoen, Wigg, O'Rourke and Woods.

Attendance: 21,699.

NOW IN FINAL

Spurs "A" 3, Chelmsford City Res. 1

In beating Chelmsford at Cheshunt last Saturday the "A" team have qualified for the Final of the Metropolitan League Autumn Shield. As Spurs won the first leg of the Semi-final by 2-0 at Chelmsford on the previous Saturday, we emerged victors on an aggregate score of 5-1.

Our first goal was netted early in the second half by Paul Shoemark, and a second soon followed when Billy Mail hit home a cross from the right.

A third goal to Spurs came towards the end when John Gilroy crossed the ball from the right wing for Vic Cogger, our amateur centre-forward, to net with the side of his foot. A defensive lapse in the closing minutes let Chelmsford in to score a consolation goal.

Team: Daines; Holder, P., Bish; Dillon, T. Naylor, Henry; Shoemark, Neighbour, V. Cogger, Gilroy and Mail.

FLASHBACK

TO 20 YEARS AGO THIS WEEK-END

SPURS had most of the play against Luton Town in a Second Division match on this ground, but it took a late goal by Les Bennett, from a centre by Bill Nicholson, to give us a 2-1 win in the closing minutes.

Bennett had given Spurs the lead in the first half with a shot that first struck the woodwork, but Bobby Brennan equalised for Luton in the second half.

It was in this match that Harry Clarke made his League debut for Spurs.

Team: Ditchburn; Tickridge, Ludford; Nicholson, Clarke, Burgess; Cox, Baily, Duquemin, Bennett and Jones.

Player Portrait



ALAN GILZEAN

Born at Coupar Angus in Perthshire . . . Joined Spurs from Dundee in December, 1964 . . . Made his debut as a Spur in a home match with Everton the same week . . . Has made 13 full appearances for Scotland and one as substitute . . . Has also played three times each for the Scottish Under-23s and the Scottish League . . . Has made 161 full appearances for Spurs in League matches alone . . . Before stepping up into big soccer with Dundee, played for Coupar Angus Juniors . . . Married, with a 17-month-old son, Kevin John . . . Lives at Enfield, and drives a Triumph 2000.

Alan tells us

THAT he rates his most memorable goal the one he headed for Scotland against England at Hampden Park in 1964. It was the only goal of the match, and Alan recalls how he managed to reach the ball from a corner-kick with Maurice Norman, England's centre-half that day, jumping with him.

THAT he has found the main difference between English and Scottish football to be in match atmosphere. "In England a player performs before big crowds every week," says Alan. "In Scotland there are only a few games each season played before capacity crowds."

THAT his greatest thrill was gaining his first Scottish cap against Norway at Hampden in 1963. Scotland won that match 6-2, and Dave Mackay scored two of the goals.

THAT the outstanding match of his career was our F.A. Cup Final victory over Chelsea in 1967. It was always Alan's ambition to play at Wembley, and victory set the seal on the occasion.

THAT golf is his favourite recreation. He is a member of Enfield Golf Club.

THAT nothing has impressed him more on sightseeing trips on tour than the view of New York City and the Hudson River from the top of the Empire State Building.



Spurs v. Everton. One of several tense moments for Gordon West, Everton's goalkeeper.

Photo by Ian McLennan, Westcliff-on-Sea

ROLL CALL

League appearances (F.A. Cup in brackets)	
Jennings	31 (4)
Beal	31 (4)
Mullery	31 (4)
Greaves	31 (4)
Gilzean	29 (4)
Venables	29 (4)
England	29 (4)
Knowles	28 (4)
Kinnear	24 (1)
Pearce	18 (2)
Cup in brackets	
Collins, P.	15 (4)
Chivers	10
Jenkins	10 (2)
Robertson	8
Jones	6
Morgan	4
Want	3
Bond	2
Johnson	2 (3)

League Cup	
Jennings	6
Beal	6
Mullery	6
Greaves	6
Gilzean	6
Kinnear	6
Venables	5
England	5
Knowles	
Knowles	5
Pearce	5
Collins, P.	3
Bond	2
Jones	2
Chivers	1
Robertson	1
Want	1

Substitutes.—League: Robertson and Johnson 3 each; Pearce and Collins, P. 2 each; Want, Knowles and Jones 1 each. League Cup: Collins, P. and Bond 1 each. F.A. Cup: Jenkins 1.

Goalscorers in League: Greaves 22 (2 pens.); Gilzean 6; Jones 5; Chivers and England 3 each; Jenkins and Morgan 2 each; Robertson, Pearce, Beal, Mullery and Knowles 1 each.

Goalscorers in F.A. Cup: Greaves 4 (1 pen.); Johnson and England 1 each.

Goalscorers in League Cup: Greaves 5; Chivers 3; Pearce 2; Jones, Venables and Collins, P. 1 each.

Combination Cup and League (London Challenge Cup in brackets):
(Excluding last night's match with Crystal Palace)

Pratt	31 (5)	Collins, P.	10 (2)
Woolcott	31 (5)	Hoy	9
Bunkell	29 (5)	Perryman	9
Skeet	27 (5)	Pearce	7
Mail	25 (5)	Jenkins	4
Cutbush	25 (5)	T. Naylor	3
Evans	23 (5)	Holder, P.	3
Johnson	21 (5)	Daines	2
Collins, J.	21 (3)	Hancock	2
Want	21 (4)	Knowles	1 (1)
Bond	20 (4)	Jones	1
Pitt	15 (1)	Kinnear	1

Substitutes.—In Combination: Evans 2; Gilroy, Clarke and Charker 1 each. In Challenge Cup: Pitt 2.

Goalscorers in Combination Cup and League: Woolcott 26; Bunkell 13 (6 pens.); Mail 11; Johnson and Pearce 8 each; Pitt 5; Bond 3; Want (1 pen.) and Perryman 2 each; Gilroy, Jenkins, Collins, P. and Pratt 1 each; Gillingham 2 own goals.

Goalscorers in Challenge Cup: Woolcott 8; Bond and Bunkell (1 pen.) 2 each; Want (pen.), Johnson, Pratt and Mail 1 each.

Metropolitan League, Autumn Shield and Professional and Challenge Cups

Henry	28	Pitt	18
T. Naylor	28	A. Bennett	12
Daines	27	V. Cogger	11
Bish	26	A. McCulloch	10
Gilroy	26	Evans	9
Neighbour	24	Shanahan	9
Holder, P.	22	Cutbush	6
Shoemark	20	Collins, J.	5
Perryman	19	Dillon	5

Clarke	4	Mail	2
Edwards	2	Woolcott	1
Bunkell	2	Charker	1
Skeet	2		

Substitutes: Clarke, G. Souness, Holder, P. and Gilroy 1 each.

Goalscorers: Gilroy 13; A. McCulloch and Pitt (4 pens.) 10 each; Neighbour, V. Cogger and Shanahan 5 each; T. Naylor 4; Shoemark and Henry 3 each; Evans and Mail 2 each; Perryman, G. Souness, Bunkell, Woolcott, Clarke and Collins, J. 1 each; Bedford Town own goal.

DEVELOPMENT SOCIETIES

DAILY DRAW. The results of the draw run by the Spurs Development Society No. 1 for the week ended 15th March (Week No. 22) were as follows:

	£10	£5	£3
Monday	0938	5942	6009
Tuesday	4609	7662	8262
Wednesday	0942	5850	4211
Thursday	0905	8937	6903
Friday	1367	5703	7929
Saturday	0895—£75		

Tickets, priced 1s. each, can be obtained from the Pools Office in the main entrance or through agents.

NEW AGENTS REQUIRED
RING 808 0281

"GOAL-TIME". The following were the winning times in the competition held by the Development Society No. 2: **Everton**—8th March, 1969

1st Goal	36 min. 25 sec.	£50
2nd Goal	85 min. 45 sec.	£25

The third prize of £10 was shared between the holders of the three "No Goal" tickets.

These competitions are held on home first-team matches only, and tickets, priced 1s. each, can be obtained from the officially-appointed sellers.

Owing to unfit pitches our Combination match at Birmingham on Tuesday and Metropolitan League game away to Arsenal on Wednesday were both postponed.

ANSWERS TO QUIZ

1. Peter Osgood.
2. Jimmy Greaves.
3. Les Allen, now player-manager to Queen's Park Rangers.
4. John Dunn of Aston Villa.
5. Jimmy Robertson and Frank Saul (Spurs), and Bobby Tambling (Chelsea).

FOOTBALL LEAGUE—DIVISION I

FIRST TEAM FIXTURES

Date	Opponents	Ground	For	Ag.
Wed. July 31	Glasgow Rangers (Friendly)	Home	3	1
Sat. Aug. 3	F.K. Austria (Friendly)	Away	2	2
Sat. " 10	Arsenal	Home	1	2
Sat. " 17	Everton	Away	2	0
Wed. " 21	West Bromwich Albion	Home	1	1
Sat. " 24	Sheffield Wednesday	Home	1	2
Wed. " 28	Manchester United	Away	1	3
Sat. " 31	Chelsea	Away	2	2
Wed. Sept. 4	Aston Villa (League Cup, 2nd Round)	Away	4	1
Sat. " 7	Burnley	Home	7	0
Sat. " 14	West Ham United	Away	2	2
Tues. " 17	Coventry City	Away	2	1
Sat. " 21	Nottingham Forest	Home	2	1
Wed. " 25	Exeter City (League Cup, 3rd Round)	Home	6	3
Sat. " 28	Newcastle United	Away	2	2
Sat. Oct. 5	Leicester City	Home	3	2
Wed. " 9	Manchester United	Home	2	2
Sat. " 12	Manchester City	Away	0	4
Wed. " 16	Peterborough Un. (League Cup, 4th Rd.)	Home	1	0
Sat. " 19	Liverpool	Home	2	1
Sat. " 26	Ipswich Town	Away	1	0
Wed. " 30	Southampton (League Cup, 5th Round)	Home	1	0
Sat. Nov. 2	Stoke City	Home	1	1
Sat. " 9	Leeds United	Away	0	0
Sat. " 16	(1) Sunderland	Home	5	1
Wed. " 20	Arsenal (League Cup, Semi-final, 1st Leg)	Away	0	1
Sat. " 23	Southampton	Away	1	2
Wed. Dec. 4	Arsenal (League Cup, Semi-final, 2nd Leg)	Home	1	1
Sat. " 7	(2) Wolverhampton Wanderers	Away	0	2
Sat. " 14	Manchester City	Home	1	1
Sat. " 21	Liverpool	Away	0	1
1969				
Sat. Jan. 4	Walsall (F.A. Cup, 3rd Round)	Away	1	0
Sat. " 11	Stoke City	Away	1	1
Sat. " 18	Leeds United	Home	0	0
Sat. " 25	Wolverhampton W. (F.A. Cup, 4th Rd.)	Home	2	1
Wed. " 29	Queen's Park Rangers	Home	3	2
Sat. Feb. 1	Sunderland	Away	0	0
Wed. " 12	Aston Villa (F.A. Cup, 5th Rd.)	Home	3	2
Sat. " 15	Queen's Park Rangers	Away	1	1
Sat. " 22	Wolverhampton Wanderers	Home	1	1
Sat. Mar. 1	Manchester City (F.A. Cup, 6th Rd.)	Away	0	1
Sat. " 8	Everton	Home	1	1
Tues. " 18	Ipswich Town	Home	2	2
Sat. " 22	(S.F.) Chelsea	Home	1	0
Mon. " 24	Arsenal	Away	0	1
Sat. " 29	Burnley	Away	2	2
Wed. Apr. 2	Newcastle United	Home	2	2
Fri. " 4	Coventry City	Home	2	3
Mon. " 7	West Bromwich Albion	Away	3	3
Sat. " 12	Nottingham Forest	Away	2	2
Sat. " 19	West Ham United	Home	1	2
Tues. " 22	Southampton	Home	2	1
Sat. " 26	F.A. Cup Final			
Tues. " 29	Leicester City	Away		
	Sheffield Wednesday	Away		

© Copyright The Football League Limited 1968

FOOTBALL COMBINATION

RESERVE TEAM FIXTURES

Date	Opponents	Ground	For	Ag.
Sat. Oct. 26	Luton Town	Home	8	0
Mon. " 28	Enfield (Lon. Challenge Cup, Semi-final)	Home	3	1
Sat. Nov. 2	Southampton	Away	1	0
Sat. " 9	Oxford United	Home	5	0
Mon. " 18	West Ham U. (Lon. Challenge Cup, Final)	Home	2	2
Sat. " 23	Cardiff City	Home	3	0
Sat. " 30	Fulham	Away	0	2
Sat. Dec. 7	Northampton Town	Home	2	0
Wed. " 11	*Southampton (Semi-final, 1st Leg)	Away	0	2
Sat. " 14	Queen's Park Rangers	Away	1	0
Mon. " 16	West Ham U. (Lon. Chal. Cup Final, Replay)	Away	2	3
Sat. " 21	Reading	Home	4	1
1969				
Sat. Jan. 4	Plymouth Argyle	Home	5	0
Sat. " 11	Bristol Rovers	Home	2	1
Tues. " 14	Ipswich Town	Away	1	6
Sat. " 25	Chelsea	Away	1	5
Sat. Feb. 1	Swansea Town	Home	1	1
Wed. " 26	*Southampton (Semi-final, 2nd Leg)	Home	3	3
Sat. Mar. 1	Peterborough United	Home	4	4
Sat. " 8	West Ham United	Away	2	2
Sat. " 15	Bournemouth & B.A.	Home	6	0
Fri. " 21	Crystal Palace	Away		
Sat. " 29	Arsenal	Home		
Tues. Apr. 8	Walsall	Away		
Sat. " 12	Swindon Town	Home		
Thur. " 17	Norwich City	Away		
	Birmingham City	Away		

© Copyright The Football League Limited 1968

* Combination Cup

'A' TEAM — METROPOLITAN LEAGUE

Date	Opponents	Ground	For	Ag.
1969				
Sat. Jan. 4	Romford	Away	2	2
Sat. " 11	Stevenage Athletic	Home	1	1
Sat. Feb. 1	Bletchley	Away	0	3
Sat. " 15	†Wellingborough Town (2nd Round)	Away	2	0
Sat. Mar. 1	*West Ham United (2nd Round)	Home	1	2
Sat. " 8	*Chelmsford City (Semi-final, 1st Leg)	Away	2	0
Sat. " 15	*Chelmsford City (Semi-final, 2nd Leg)	Home	3	1
Sat. " 22	Wimbledon	Home		
Sat. " 29	Chelmsford City	Away		
Tues. Apr. 1	Braintree & Crittall Athletic	Away		
Mon. " 7	Bury Town	Away		
Sat. " 12	Metropolitan Police	Home		
	Bletchley	Home		
	Braintree & Crittall Athletic	Home		
	Cray Wanderers	Home		
	Stevenage Athletic	Away		
	Hatfield Town	Away		
	Arsenal	Away		
	Cray Wanderers	Away		

* Autumn Shield

† Professional Cup

‡ Challenge Cup

LEAGUE TABLES

FOOTBALL LEAGUE

FOOTBALL COMBINATION

DIVISION I									
Up to and incl. 18th March									
	P.	W.	D.	L.	F.	A.	Ps.	Goals	
Leeds United	33	23	8	2	59	24	54		
Liverpool	32	21	6	5	52	19	48		
Everton	31	17	10	4	64	27	44		
Arsenal	30	17	8	5	43	18	42		
Chelsea	34	16	8	10	62	44	40		
West Ham United	31	12	13	6	58	37	37		
Southampton	35	12	11	12	44	43	35		
Burnley	34	13	8	13	44	63	34		
Tottenham H.	31	9	15	7	48	41	33		
Sheffield Wed.	31	10	11	10	34	38	31		
Wolverhampton	32	9	13	10	33	38	31		
Ipswich Town	33	11	8	14	48	50	30		
West Bromwich	32	11	8	13	44	53	30		
Manchester City	31	10	9	12	54	43	29		
Newcastle Un.	30	9	10	11	39	42	28		
Sunderland	34	9	9	16	37	61	27		
Manchester Un.	31	8	10	13	35	43	26		
Stoke City	32	7	11	14	29	46	25		
Nottingham F.	32	6	12	14	36	47	24		
Leicester City	30	6	10	14	28	52	22		
Coventry City	32	7	7	18	37	53	21		
Queen's Park R.	35	3	9	23	32	78	15		

Up to and incl. 17th March									
	P.	W.	D.	L.	F.	A.	Ps.	Goals	
Fulham	20	16	2	2	68	26	34		
Arsenal	17	13	4	0	53	12	30		
Crystal Palace	21	14	2	5	40	26	30		
Tottenham Hotspur	19	13	3	3	54	23	29		
West Ham United	19	8	9	2	36	21	25		
Ipswich Town	18	10	4	4	50	28	24		
Queen's Park R.	20	8	6	6	39	38	22		
Norwich City	18	6	7	5	40	33	19		
Gillingham	17	7	5	5	18	19	19		
Southampton	18	8	2	8	27	16	18		
Birmingham City	21	7	4	10	35	30	18		
Bristol City	17	8	2	7	33	27	18		
Cardiff City	19	7	4	8	22	29	18		
Bristol Rovers	20	8	2	10	34	45	18		
Walsall	17	7	3	7	30	26	17		
Plymouth Argyle	20	6	4	10	17	31	16		
Chelsea	18	6	3	9	30	34	15		
Peterborough Un.	19	3	9	7	23	31	15		
Leicester City	17	5	4	8	24	33	14		
Swansea Town	17	4	6	7	25	36	14		
Luton Town	18	4	6	8	18	41	14		
Oxford United	17	5	3	9	20	37	13		
Bournemouth & B.	18	3	6	9	20	38	12		
Northampton Town	19	4	2	13	23	46	10		
Swindon Town	18	4	2	12	14	32	10		
Reading	20	4	2	14	21	56	10		

METROPOLITAN LEAGUE

SOUTH-EAST COUNTIES

Up to and incl. 15th March									
	P.	W.	D.	L.	F.	A.	Ps.	Goals	
Met. Police	21	12	3	6	58	39	27		
Bletchley	20	10	5	5	27	18	25		
West Ham United	23	10	5	8	37	33	25		
Tottenham H.	18	9	6	3	43	27	24		
Stevenage Ath.	18	8	6	4	32	23	22		
Romford	23	8	6	9	43	47	22		
Chelmsford City	20	9	3	8	43	33	21		
Bury Town	16	9	2	5	30	17	20		
Braintree & Critt.	16	6	7	3	20	15	19		
Wellingborough	19	9	1	9	37	35	19		
Sheppey United	18	8	3	7	38	38	19		
Hatfield Town	16	4	7	5	23	24	15		
Cray Wanderers	15	5	4	6	23	21	14		
Arsenal	20	5	2	13	23	45	12		
Wimbledon	20	5	1	14	21	49	11		
Bedford Town	21	3	3	15	22	56	9		

DIVISION I									
Up to and incl. 15th March									
	P.	W.	D.	L.	F.	A.	Ps.	Goals	
Millwall	25	21	3	1	108	29	45		
Ipswich Town	22	17	5	0	70	20	39		
Orient	21	15	6	0	65	26	36		
Charlton Athletic	23	14	5	4	58	28	33		
Queen's Park R.	23	13	4	6	55	33	30		
Crystal Palace	25	13	1	11	57	57	27		
Tottenham H.	25	12	2	11	72	37	26		
West Ham United	26	8	7	11	44	56	23		
Chelsea	22	10	2	10	59	45	22		
Luton Town	24	7	7	10	46	54	21		
Fulham	22	7	3	12	31	41	17		
Watford	24	7	3	14	33	69	17		
Reading	25	6	5	14	37	82	17		
Colchester Un.	25	7	3	15	34	85	17		
Brighton & Hove	25	5	4	16	38	64	14		
Gillingham	20	4	1	15	21	45	9		
Oxford United	21	1	3	17	12	70	5		