

FOOTBALL LEAGUE—DIVISION ONE

**TOTTENHAM
HOTSPUR ²
v.
LIVERPOOL ¹**

Official Programme

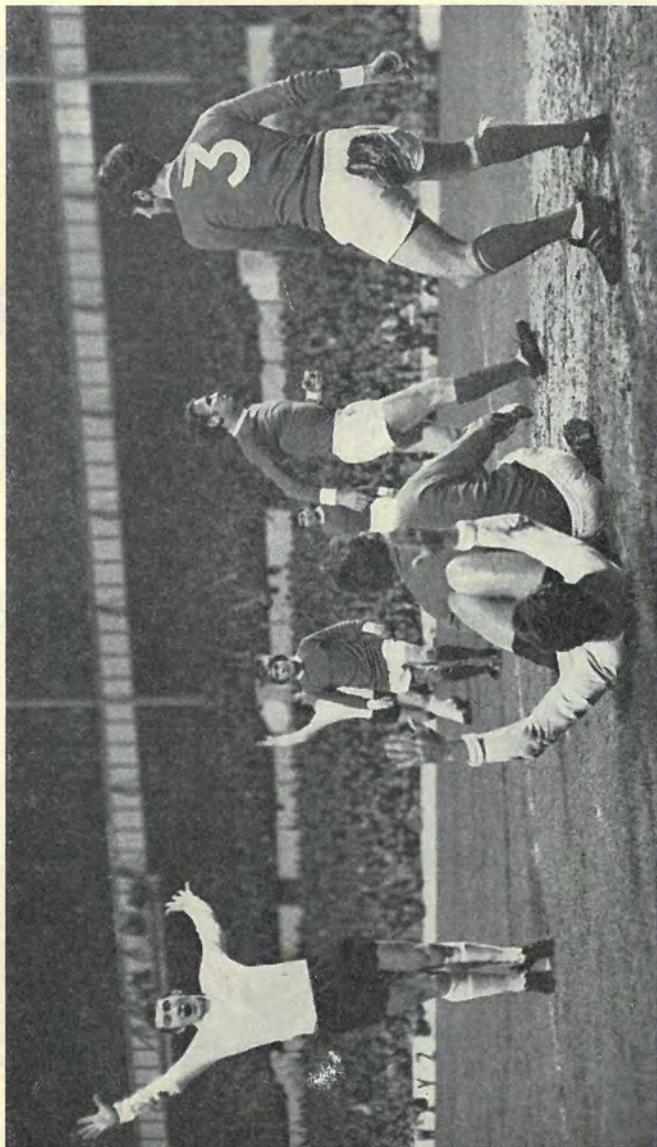
Price SIXPENCE



**SEASON 1968-69
Vol. 61 No. 19**

Saturday, 19th October, 1968

KICK-OFF 3 p.m.



Spurs v. Manchester United. Cliff Jones (on ground) after scoring his last goal for Spurs.
Picture by MONTE FRESCO—DAILY MIRROR

TOTTENHAM HOTSPUR

FOOTBALL AND ATHLETIC COMPANY LIMITED

Chairman: FREDK. WALE Vice-Chairman: S. A. WALE

Directors: C. F. COX, A. RICHARDSON

Manager: W. E. NICHOLSON Secretary: G. W. JONES Medical Officer: Dr. BRIAN CURTIN

League Champions: 1950-51, 1960-61

F.A. Cup Winners: 1901, 1921, 1961, 1962, 1967

Winners of European Cup Winners Cup: 1963

COPYRIGHT

ALL RIGHTS RESERVED

COMMENT

THE visit of Liverpool has become one of the big attractions of our League programme in recent years, and in welcoming officials, players and supporters of the Anfield club to White Hart Lane this afternoon, we have every reason to anticipate a match replete with thrills, excitement and high quality football.

Liverpool stand second to Leeds United at the top of the First Division, and it is obvious that our players face one of their hardest home matches of the season. Our own progress in the League was more than satisfying until that depressing crash on Manchester City's ground last Saturday, and we can only hope that the events at Maine Road will have stiffened the resolve of our players to regain the points-winning habit today.

Our two great F.A. Cup matches with Liverpool last season are still fresh in our minds, and our defeat in the replay at Anfield gives us something to avenge today. Three of the four matches we played against Liverpool last season ended in 1-1 draws, and our Cup defeat was by the narrow margin of 2-1.

If past results are any criterion, Spurs and Liverpool are evenly matched. It all suggests a tense struggle today.

STRONG DEFENCE

The strength of Liverpool's defence is underlined by their concession of a mere eight goals in the 14 League matches

played to date. The Merseysiders have yielded four away and four at home.

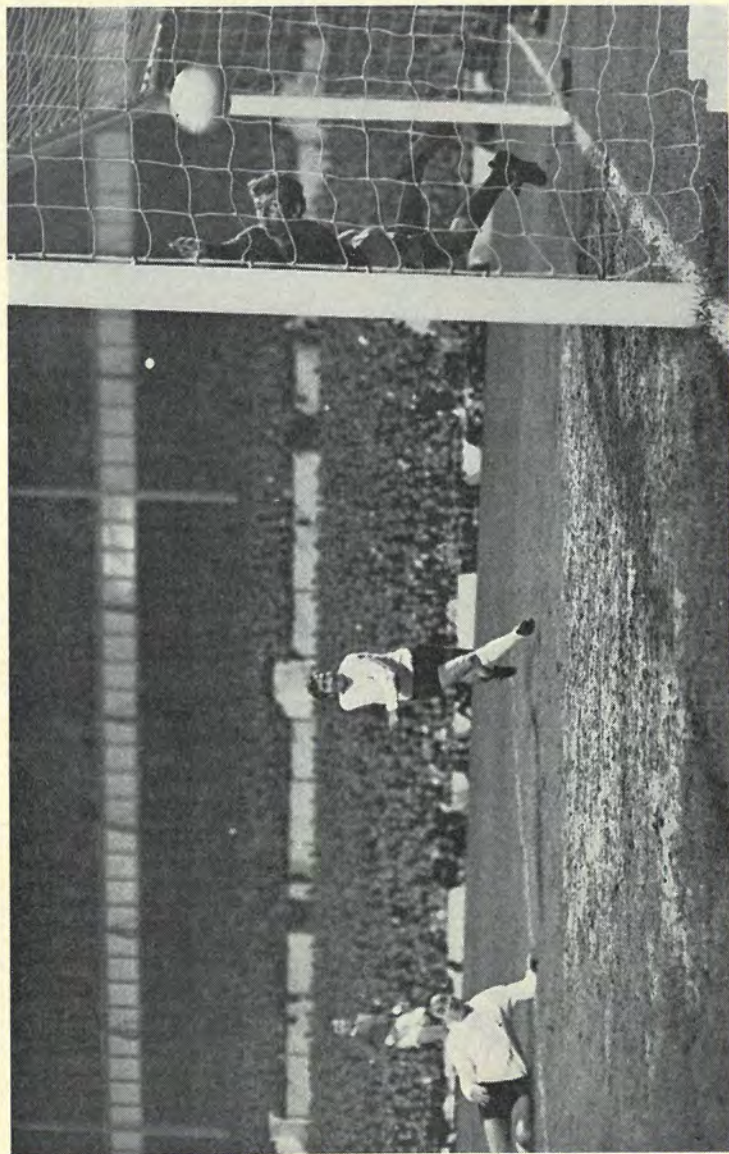
It is not only Liverpool's defence, however, that commands respect. The Anfielders have also scored more goals than any other club in the First Division.

Liverpool's only two defeats this season were at Southampton (0-2) and Leeds (0-1). They drew with Arsenal (1-1) and Everton (0-0) in away games, and have since won at Ipswich (2-0), Wolverhampton (6-0) and Burnley (4-0).

On their own ground Liverpool have won six of their seven League matches. The one point they dropped was to Everton in a 1-1 draw.

QUIZ FOR TODAY—Answers on page 13

1. Cliff Jones played the last 10 minutes as substitute when we lost to Liverpool in the Fifth Round of the F.A. Cup last March. Who did he replace?
2. A Spurs player made his First Division debut against Liverpool as a substitute. Who and when?
3. Which Spurs forward made his League debut for the club in an away match with Liverpool?
4. Mr. Bill Shankly, Liverpool's manager, played right-half for another Lancashire club against Spurs on this ground in his playing days. Can you name the club?
5. Who scored Liverpool's equaliser against Spurs last season in our home Fifth Round Cup-tie?



Spurs v. Manchester United. Alan Gilzean falls to the ground after heading our second goal.

Picture by MONTE FRESCO—DAILY MIRROR

GOAL RUSH

Spurs Res. 8, Millwall Res. 2

The Reserves had an easy passage into the Semi-final of the London Challenge Cup by beating Millwall here 8—2 on Monday evening.

In spite of the difference between the teams it was a match full of interest, and Millwall had more of the play than the final score suggests.

Neil Johnson put Spurs in front in the first minute, and Dennis Bond cracked in a brilliant second goal in the 13th. No. 3 was notched by Roy Woolcott, who snapped up the loose ball after goalkeeper Geoff Parsons had fumbled another shot by Bond.

In the two minutes before half-time, Bond with another great shot, and Woolcott from close range, took our lead to 5—0.

After Woolcott had headed our sixth goal in the 60th minute, George Duck, Millwall's second-half substitute, headed through for the visitors. Woolcott took his tally to five with two late goals, the first after a shot by Cyril Knowles had been pushed out by Parsons, and the other following an upfield dash by Knowles.

Between Woolcott's last two goals, Ronnie Howell converted a penalty for Millwall after he had been brought down by Stuart Skeet.

Team: Skeet; Cutbush, Knowles; Evans, Collins, P., Pratt; Johnson, Bunkell, Bond, Woolcott and Mail.

In the Semi-final on Monday, 28th October we are now at home to Enfield, our Isthmian League neighbours.

DID YOU KNOW . . .

THAT Liverpool's record crowd was 61,905 for a Cup match with Wolverhampton Wanderers in 1952?

THAT Liverpool were in the Second Division from 1954 to 1962?

THAT Spurs had never met Liverpool in the F.A. Cup until last season?



Dennis Bond

YOUTH WIN

Both the Youth and Junior teams pulled off good wins last Saturday.

The Youth XI were at home at Cheshunt to Ipswich Town in the Second Round of the South-East Counties League Cup, Division 1, and were winners by 3—0. The goals were scored by Graeme Souness, Ray Clarke and Peter McGillicuddy.

Team: Lee; A. Manley, Bowles; Dillon, Edwards, G. Souness; Charker, P. McGillicuddy, Clarke, C. Thompson and Shanahan.

On Wednesday the Youth team are at home on this ground to Charlton Athletic, kick-off 7.30 p.m., in the First Round of the London Youth Challenge Cup. Spurs are the current holders of this trophy.

The Junior team beat a strong Orient team at Walthamstow 3—1 on Saturday in the South-East Counties League, Division 2 Cup. The goals were scored by Michael Flanagan, David Staines and Bob Wiles.

Team: A. Hafford; M. Embleton, S. Hazle; P. Lowry, P. Goddard, S. Hayzelden; J. Oliver, R. Wiles, D. Staines, E. Jones and M. Flanagan.

MAN IN CHARGE

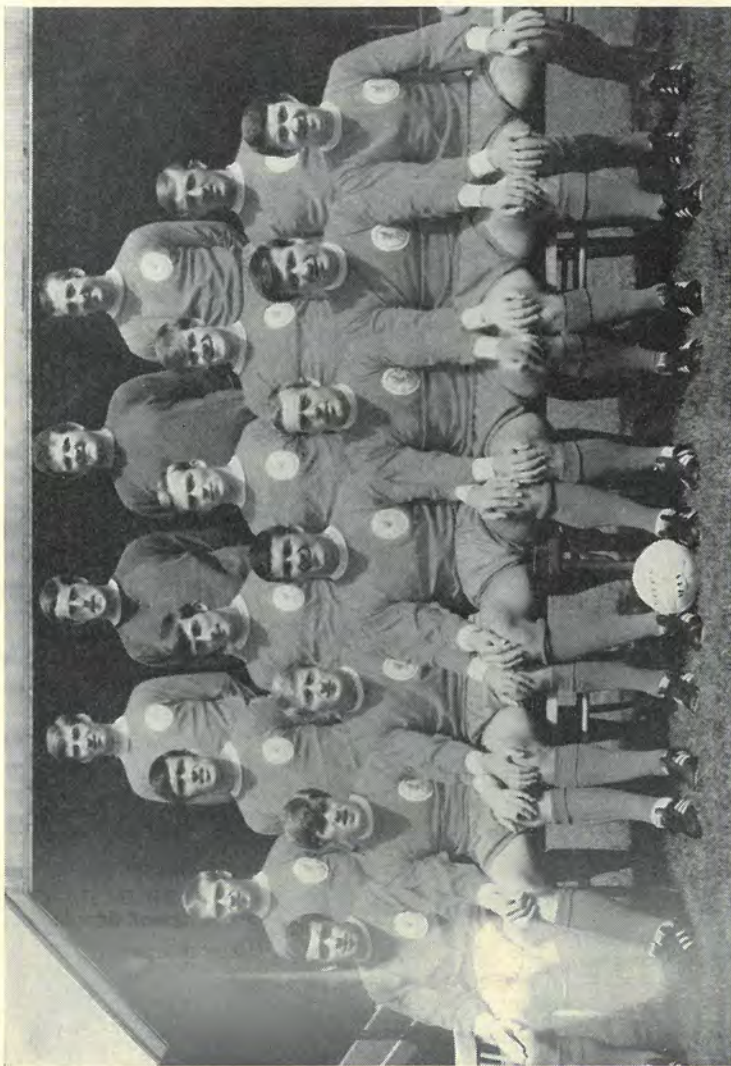
Referee for today is Mr. Tom Dawes of Norwich, who is one of the most experienced officials in football.

Mr. Dawes is, in fact, in his 11th season on the Football League List. His route to the top as a referee was via the East Anglian and Eastern Counties Leagues.

In his younger days Mr. Dawes played in good-class amateur football himself. He served in the R.A.F., and an injury in a Service match put an end to his days as a player.

Mr. Dawes has controlled many big games in the F.A. Cup, and has also officiated in the European Cup. He is employed as a sales representative.

His last match on this ground was the occasion of Manchester City's visit in February, 1967.



Liverpool, 1968-69. Back row, left to right: G. Strong, R. Clemence, T. Lawrence, G. Byrne. Centre row, left to right: R. Graham, T. Hateley (now Coventry City), T. Wall, I. Ross, A. Arrowsmith, P. Thompson. Front row, left to right: I. Callaghan, E. Hughes, R. Hunt, R. Yeats, I. St. John, T. Smith, C. Lawler.

Photo by Provincial Press Agency, Southampton

THE MEN OF ANFIELD . . .

LIVERPOOL are a star team, consisting of star players. Every man wearing the Liverpool colours this afternoon is a player of established reputation, but there has been one departure from the team that opposed us in that Fifth Round F.A. Cup replay at Anfield last March.

Tony Hateley, who played centre-forward against us, left Liverpool for Coventry City last month. In his place today we are likely to see **Alun Evans**, who was signed from Wolverhampton Wanderers last month.

Some players take time to settle down with a new club, but Evans struck the top note as soon as he arrived at Anfield. He comes from Bewdley in Worcestershire, and developed to League rank via Wolves' nursery system.

FROM WREXHAM

The only other player who may be wearing a Liverpool shirt on this ground for the first time is **Peter Wall**, the full-back signed from Wrexham in October, 1966. Wall was born at Shrewsbury, and played for the Shrewsbury Town club before joining Wrexham. He made his League debut for the Anfielders last season.

Tommy Lawrence, who has played for Scotland, is still the first-choice goalkeeper for Liverpool. Lawrence is a man of Ayrshire, but he has been at Anfield since he was 15.

Right-back **Chris Lawler** is one of Liverpool's local discoveries. He was born on Merseyside, and gained both schoolboy and youth international honours. It was in March, 1963 that Lawler made his League debut.

PENALTY MEMORY

We have good reason to remember **Tommy Smith**, Liverpool's midfield player. It was Smith's twice-taken penalty-kick that sealed our fate in last season's Cup replay at Anfield.

Smith is another local Liverpool discovery, who joined the club straight from school. A former England Under-23 player, Smith covers an enormous amount of ground in switching between defensive and attacking positions.

Ron Yeats, Liverpool's captain and centre-half, is a full Scottish international. He was born in Aberdeen, but made his name with Dundee United. Yeats was signed by Liverpool from the Scottish club in July, 1961.

Emlyn Hughes, who wore the No. 6 shirt against us last season, started as a left-back. He was born at Barrow-in-Furness, and started his career with Blackpool. Liverpool signed him from Blackpool in February, 1967.

FORMER GUNNER

Geoff Strong, wing-half or inside-forward, is a former Arsenal player. He was transferred from the Highbury club to Liverpool in November, 1964, but has spent a lot of his Anfield service in the Central League team.

Strong joined Arsenal from Stanley United, a club in the North-east, as an amateur in 1957, and turned professional with the Gunners the following year.

We have good reason to respect the goalscoring power of inside-forward **Roger Hunt**. The English international scored the first of Liverpool's two goals against us in last season's Anfield replay, and it was Hunt's equaliser that earned a point for his team in last season's League match here.

Hunt also netted all three goals when Liverpool beat us on this ground by 3-1 in March, 1964.

WORLD CUP PLAYER

Right-winger **Ian Callaghan** is a full English international, who played against France in the World Cup in the summer of 1966. He was born in Liverpool, and has been at Anfield since leaving school. Callaghan has been on professional forms with the club since March, 1960.

Ian St. John is another of Liverpool's international forwards. A Scot from Motherwell, he was transferred to Liverpool at the end of season 1960-61, and made his debut for the Anfield club in Second Division football in 1961-62.

Peter Thompson is a player of equal stature. Another full international, Thompson was born at Carlisle, and started his career with Preston North End. A schoolboy international,

HALF-TIME SCORES IN OTHER MATCHES

The appended Code corresponds with letters on the Scoring Board thus means the first-named Club has scored 1 and their opponents 0.

A₀ ★ Not played

A Burnley v. Leeds United	N Cardiff City v. Bolton Wand.
B Chelsea v. Leicester City	O Carlisle United v. Blackpool
C Coventry C. v. Manchester C.	P Charlton Athletic v. Oxford Un.
D Everton v. Stoke City	Q Crystal Palace v. Bristol City
E Manchester U. v. Southampton	R Huddersfield T. v. Sheffield U.
F Newcastle United v. Q.P.R.	S Middlesbrough v. Fulham
G Nottingham Forest v. Ipswich T.	T Norwich City v. Aston Villa
H Sheffield W. v. Wolverhampton	U Portsmouth v. Derby County
J West Bromwich A. v. Arsenal	V Preston N.E. v. Hull City
K West Ham United v. Sunderland	W Plymouth Argyle v. Luton Town
L Birmingham City v. Millwall	X Watford v. Barrow
M Bury v. Blackburn Rovers	Y Brentford v. Wrexham

Thompson chose to join Preston in preference to Manchester United in the belief that he would encounter less competition at Deepdale.

Thompson left Preston for Liverpool in August, 1963.

Alf Arrowsmith is a possible forward inclusion for Liverpool. He was born in Manchester, and played for Ashton United before signing professional forms for Liverpool in May, 1961.

AT IPSWICH

Next Saturday we visit Ipswich Town, who were promoted to the First Division at the end of last season. We hope many of our supporters will make the trip to cheer the team in Suffolk, but it should be noted that tickets for seats cannot be purchased in advance. All seats have

been sold by the Ipswich club as season-ticket bookings.

For this match British Rail will issue cheap day return tickets at a fare of 21s.

FORWARD

Liverpool St. dep. 11.30 12.30 13.30
Ipswich arr. 12.39 13.47 14.39

RETURN

Ipswich dep. 17.19 18.24 18.45
Liverpool St. arr. 18.43 19.40 20.51

A special train will also leave Liverpool St. at 11.25 arriving Ipswich 12.35. Return departure is 17.15, arriving Liverpool St. 18.34.

Henry Coaches will operate a service at a return fare of 14s. Coaches will leave Whitehall Street (opposite ground) at 10 a.m. and No. 1 Broad Lane, N.15 at 10.15 a.m.

FORTHCOMING FIXTURES

Wednesday, 23rd October, 1968

CHARLTON ATHLETIC YOUTH XI

London Youth Challenge Cup, 1st Round

Kick-off 7.30 p.m.

Saturday, 26th October, 1968

LUTON TOWN RESERVES

Football Combination

Kick-off 3 p.m.

FOOTBALL LEAGUE, DIVISION I

KICK-OFF 3 p.m.

TOTTENHAM HOTSPUR
White Shirts, Blue Shorts

RIGHT WING LEFT WING

1
JENNINGS

2 **KINNEAR** 3 **WANT**

4 **MULLERY (Capt)** 5 **COLLINS, P.** 6 **BEAL**

8 **GREAVES** 10 **VENABLES**

7 **ROBERTSON** 9 **PEARCE** 11 **GILZEAN**

11 **THOMPSON** 9 **EVANS** 7 **CALLAGHAN**

10 **ST. JOHN** 8 **HUNT**

6 **HUGHES** 5 **YEATS (Capt.)** 4 **SMITH**

3 **STRONG** 2 **LAWLER**

1 **LAWRENCE**

LEFT WING RIGHT WING

LIVERPOOL
Red Shirts, Red Shorts

Referee: **Mr. T. W. DAWES**, Norfolk

Linesmen: **Mr. K. S. CROFTS**, Devon (Red Flag)

Mr. D. J. DARGAVEL, Essex (Yellow Flag)

Substitutes: (Home Club)..... (Visiting Club).....

SPURS DEVELOPMENT SOCIETY No. 1

SPURS NEW DAILY DRAW

★ **PRIZES £100 WEEKLY** ★

★ £50 EACH SATURDAY

★ £10 EACH DAY (MONDAY TO FRIDAY)

★ Tickets, 1s. each, from Agents or the Pools Office

AGENTS REQUIRED

- ★ Commission on Sales
- ★ Special Prizes every week

Wherever you live and are interested in the New Daily Draw, you could become an Agent for the Development Society. Full details will be supplied on completion of the application form below, which can be sent by post, or handed in at the Pools Office in the main entrance.

Please send me, without obligation, details of the New Draw.
(I am over 21 years of age.)

NAME

(Block letters)

ADDRESS

..... Phone.....

To Pools Organiser:

Spurs Development Society, 748 High Road, Tottenham, N.17.

ALL PROCEEDS TO GROUND IMPROVEMENTS

Player Portrait



**MIKE
ENGLAND**

Born at Greenfield, near Holywell in North Wales . . . Joined Spurs from Blackburn Rovers on 19th August, 1966, and made his first appearance the following day at home to Leeds United in the opening match of the season . . . Has become a regular member of the Welsh international team since gaining his first full cap versus Ireland at Cardiff in 1962 . . . To date has made 87 League appearances for Spurs . . . Attended the same school in Holywell as his Welsh international colleague Ron Davies, the Southampton centre-forward . . . Married, with two small boys, Darren and Wayne . . . Lives at Cheshunt, and drives a Vauxhall SL 90 automatic.

Mike tells us

THAT he has never faced a more formidable opponent than the great Pele of Brazil. Playing wing-half for Wales, Mike once kept Pele in check until the last five minutes, when he broke loose to score twice for Brazil to win 3—1.

THAT his great ambition is to win a League championship medal with Spurs.

THAT considering the ground conditions, our match at West Ham this season was one of the finest he has ever played in.

THAT if he had not turned to football for his living, he would have chosen cricket. At 15 he had the choice of a trial with Blackburn or Glamorganshire County Cricket Club, and decided on the former.

THAT golf and cricket are his favourite forms of recreation.

THAT no sightseeing jaunt on his football travels has thrilled him more than visiting Hollywood.

MANCHESTER CITY v. SPURS



This shot from Jimmy Pearce struck City's crossbar.



Harry Dowd, City's goalkeeper, clearing from a corner by Jimmy Greaves (out of picture).

Photos by Provincial Press Agency, Southport

GOOD PROGRESS

We are pleased to report good progress by Martin Chivers following the serious knee injury, and subsequent operation, he sustained playing against Nottingham Forest last month.

With the aid of a stick, Martin is now able to attend our matches on this ground, and understandably, he is impatient for the next few weeks to pass.

He is due for a thorough examination in a fortnight's time, when we hope to have favourable news of his condition.



SPURS BOOK

The Tottenham Hotspur Football Book No. 2, published by Stanley Paul at 18s., is now on sale. This is, in a sense, a sequel to the book written about the club last year, and the author is again Dennis Signy, the football writer.

Mr. Signy has written at considerable depth, and in fascinating style, about the Club, individual players and our behind-the-scenes administration.

The book is profusely illustrated with action and off-field photographs, and there is a commendable accuracy about the facts and figures given by the author.

This book, with its foreword by Alan Mullery, looks an ideal suggestion for a Christmas present for any Spurs supporter.

FLASHBACK

TO 20 YEARS AGO THIS WEEK-END

SPURS won a hard, gruelling Second Division match against Queen's Park Rangers by the only goal of the afternoon, scored by Eddie Baily. The goal followed a slick pass by Len Duquemin, and Baily's hard drive was helped into the net by Arthur Jefferson, Rangers' left-back, who made a desperate effort to clear off the goal-line.

The match was watched by a crowd of 69,718.

Team: Ditchburn; Tickridge, Willis; Nicholson, Buckingham, Burgess; COX, Baily, Duquemin, Bennett and Jones.

DEVELOPMENT SOCIETIES

WEEKLY DRAW. The following were the main prizewinners in the Pool for the week ended 5th October, 1968 (Week No. 27):

First Prize: £27

Mr. A. Elliott, Chalgrove Road, N.17.

Second Prize: £18

Mr. J. Bex, Marquis Court, Finsbury Park, N.4.

Third Prize: £9

Mr. D. L. Palmer, Windsor Road, Holloway, N.7.

There were also consolation prizes and special prizes for agents who sold the winning chances.

The winning share numbers for week ended 12th October, 1968 (Week No. 28) were as follows:

First Prize: H.292

Second Prize: H.432

Third Prize: G.382

The amounts of the prizes will be published in next week's programme, together with this week's winning share numbers.

"GOAL-TIME". The following were the winning times in the competition held on 9th October, Manchester United:

1st Goal 8 min. 27 sec. £50

2nd Goal 20 min. 24 sec. £25

3rd Goal 34 min. 23 sec. £10

These competitions are held on home first-team matches only, and tickets, priced 1s. each, can be obtained from the officially-appointed sellers.

Liverpool have scored more and conceded fewer goals in the League this season than any other First Division Club.

As these notes were of necessity written before Wednesday evening's Football League Cup-tie with Peterborough United, we have been unable to make any reference to that match.

ANSWERS TO QUIZ

1. Dave Mackay.
2. Dennis Bond, in our home League match with Liverpool in April, 1967.
3. Jimmy Robertson, in March, 1964.
4. Preston North End.
5. Tony Hateley.

FOOTBALL LEAGUE—DIVISION I

FIRST TEAM FIXTURES

Date	Opponents	Ground	For	Ag.
1968				
Wed. July 31	Glasgow Rangers (Friendly)	Home	3	1
Sat. Aug. 3	F.K. Austria (Friendly)	Home	2	2
Sat. " 10	Arsenal	Home	1	2
Sat. " 17	Everton	Away	2	0
Wed. " 21	West Bromwich Albion	Home	1	1
Sat. " 24	Sheffield Wednesday	Home	1	2
Wed. " 28	Manchester United	Away	1	3
Sat. " 31	Chelsea	Away	2	2
Wed. Sept. 4	Aston Villa (League Cup, 2nd Round)	Away	4	1
Sat. " 7	Burnley	Home	7	0
Sat. " 14	West Ham United	Away	2	2
Tues. " 17	Coventry City	Away	2	1
Sat. " 21	Nottingham Forest	Home	2	1
Wed. " 25	Exeter City (League Cup, 3rd Round)	Home	6	3
Sat. " 28	Newcastle United	Away	2	2
Sat. Oct. 5	Leicester City	Home	3	2
Wed. " 9	Manchester United	Home	2	2
Sat. " 12	Manchester City	Away	0	4
Wed. " 16	Peterborough Un. (League Cup, 4th Rd.)	Home	1	0
Sat. " 19	Liverpool	Home		
Sat. " 26	Ipswich Town	Away		
Sat. Nov. 2	Stoke City	Home		
Sat. " 9	Leeds United	Away		
Sat. " 16	(1) Sunderland	Home		
Sat. " 23	Southampton	Away		
Sat. " 30	Queen's Park Rangers	Home		
Sat. Dec. 7	(2) Wolverhampton Wanderers	Away		
Sat. " 14	Manchester City	Home		
Sat. " 21	Liverpool	Away		
Thur. " 26	Leicester City	Away		
Sat. " 28	Ipswich Town	Home		
1969				
Sat. Jan. 4	(3)	Away		
Sat. " 11	Stoke City	Home		
Sat. " 18	Leeds United	Home		
Sat. " 25	(4)			
Sat. Feb. 1	Sunderland	Away		
Sat. " 8	(5) Southampton	Home		
Sat. " 15	Queen's Park Rangers	Away		
Sat. " 22	Wolverhampton Wanderers	Home		
Sat. Mar. 1	(6) Arsenal	Away		
Sat. " 8	Everton	Home		
Sat. " 15	Sheffield Wednesday	Away		
Sat. " 22	(S.F.) Chelsea	Home		
Sat. " 29	Burnley	Away		
Wed. Apr. 2	Newcastle United	Home		
Fri. " 4	Coventry City	Home		
Mon. " 7	West Bromwich Albion	Away		
Sat. " 12	Nottingham Forest	Away		
Sat. " 19	West Ham United	Home		
Sat. " 26	F.A. Cup Final			

© Copyright The Football League Limited 1968

FOOTBALL COMBINATION

RESERVE TEAM FIXTURES

Date	Opponents	Ground	For	Ag.
1968				
Sat. Aug. 10	*Gillingham	Away	1	1
Sat. " 17	*Norwich City	Home	1	1
Wed. " 21	*Norwich City	Away	0	2
Sat. " 31	*Crystal Palace	Home	8	1
Sat. Sept. 7	*Fulham	Away	0	0
Wed. " 11	*Gillingham	Home	3	0
Sat. " 14	*Fulham	Home	6	0
Wed. " 18	*Crystal Palace	Away	3	1
Sat. " 21	*Ipswich Town	Away	3	1
Sat. " 28	*Ipswich Town	Home	2	1
Mon. " 30	Dagenham (Lon. Challenge Cup, 1st Rd.)	Home	1	0
Sat. Oct. 5	Bristol City	Away	4	1
Sat. " 12	Gillingham	Home	2	0
Mon. " 14	Millwall (Lon. Challenge Cup, 2nd Rd.)	Home	8	2
Sat. " 19	Leicester City	Away		
Sat. " 26	Luton Town	Home		
Mon. " 28	Enfield (Lon. Challenge Cup, S/Final)	Home		
Sat. Nov. 2	Southampton	Away		
Sat. " 9	Oxford United	Home		
Tues. " 19	Walsall	Away		
Sat. " 23	Cardiff City	Home		
Sat. " 30	Fulham	Away		
Sat. Dec. 7	Northampton Town	Home		

© Copyright The Football League Limited 1968

* Combination Cup

'A' TEAM — METROPOLITAN LEAGUE

Date	Opponents	Ground	For	Ag.
1968				
Sat. Aug. 10	Wellingborough Town	Away	2	1
Sat. " 17	Wimbledon	Away	2	1
Sat. " 24	Bedford Town	Away	2	1
Sat. " 31	Sheppey United	Home	3	1
Sat. Sept. 7	*Metropolitan Police	Away	5	1
Wed. " 11	*Hatfield Town	Home	2	0
Sat. " 14	Sheppey United	Away	2	0
Wed. " 18	West Ham United	Away	3	4
Sat. " 21	†Wimbledon	Away	4	1
Wed. " 25	*Bletchley	Away	3	1
Sat. " 28	Bury Town	Home	0	1
Sat. Oct. 5	Bedford Town	Home	8	1
Sat. " 12	*Bletchley	Home	0	3
Sat. " 19	Arsenal	Home		
Sat. " 26	Romford	Home		
Sat. Nov. 2	Metropolitan Police	Away		
Sat. " 9	West Ham United	Home		

* Autumn Shield

† Challenge Cup, 1st Round

LEAGUE TABLES

FOOTBALL LEAGUE

FOOTBALL COMBINATION

DIVISION I							Up to and incl. 15th Oct.						
Up to and incl. 12th Oct.				Goals			P. W. D. L.				Goals		
	P.	W.	D.	L.	F.	A.	P.	W.	D.	L.	F.	A.	Ps.
Leeds United ...	13	10	2	1	24	10	22						
Liverpool	14	9	3	2	30	8	21						
Arsenal	14	8	5	1	20	10	21						
Everton	14	7	5	2	28	12	19						
Chelsea	14	6	6	2	26	14	18						
West Ham Un... 14	5	6	3	22	16	16							
Sheffield Wed... 14	5	6	3	19	17	16							
Tottenham H. ... 14	5	5	4	28	24	15							
West Brom. A... 14	6	3	5	26	28	15							
Sunderland	14	4	6	4	17	18	14						
Burnley	14	6	2	6	18	30	14						
Manchester City. 14	4	5	5	20	19	13							
Newcastle United 14	3	6	5	21	21	12							
Manchester Un.. 13	4	4	5	17	21	12							
Stoke City	14	4	3	7	13	21	11						
Wolverhampton . 14	3	5	6	12	20	11							
Ipswich Town... 14	4	2	8	20	26	10							
Southampton ... 14	3	4	7	16	23	10							
Leicester City ... 14	3	3	8	14	23	9							
Queen's Park R.. 14	2	5	7	15	30	9							
Nottingham F. ... 12	1	6	5	17	21	8							
Coventry City... 14	2	4	8	14	25	8							
Tottenham Hotspur.. 2	2	0	0	6	1	4							
Arsenal..... 2	2	0	0	5	1	4							
Birmingham City ... 3	2	0	1	11	3	4							
West Ham United... 3	1	2	0	9	3	4							
Bristol Rovers..... 2	2	0	0	5	2	4							
Oxford United..... 2	1	1	0	4	2	3							
Cardiff City	2	1	1	0	3	2							
Swansea Town	2	1	1	0	4	3							
Crystal Palace	1	1	0	0	2	1							
Fulham	1	1	0	0	2	1							
Southampton	2	1	0	1	4	3							
Ipswich Town	2	0	2	0	5	2							
Gillingham	2	1	0	1	3	2							
Peterborough United 2	0	2	0	2	2	2							
Queen's Park R..... 2	0	2	0	2	2	2							
Northampton Town. 2	1	0	1	2	3	2							
Bristol City	2	1	0	1	4	5							
Reading	2	1	0	1	4	7							
Norwich City..... 2	0	1	1	5	6	1							
Chelsea..... 2	0	1	1	2	4	1							
Bournemouth & B.A. 2	0	1	1	1	4	1							
Walsall	2	0	0	2	3	5							
Plymouth Argyle.... 1	0	0	1	1	3	0							
Luton Town	2	0	0	2	2	8							
Swindon Town	3	0	0	3	2	8							
Leicester City	2	0	0	2	0	6							

METROPOLITAN LEAGUE

SOUTH-EAST COUNTIES

Up to and incl. 12th Oct.							DIVISION I						
Up to and incl. 12th Oct.				Goals			Up to and incl. 12th Oct.				Goals		
	P.	W.	D.	L.	F.	A.	P.	W.	D.	L.	F.	A.	Ps.
Stevenage Ath. ... 10	6	2	2	14	9	14							
Tottenham H. ... 8	6	0	2	22	10	12							
Arsenal	9	5	1	3	14	16	11						
Sheppey United . 7	5	0	2	18	12	10							
West Ham Un... 10	4	2	4	18	18	10							
Bury Town	7	4	1	2	11	6	9						
Chelmsford City. 9	4	1	4	18	13	9							
Braintree & Crit. 8	4	1	3	8	6	9							
Met. Police	6	4	0	2	19	18	8						
Romford	8	3	2	3	20	19	8						
Bletchley	5	3	0	2	6	5	6						
Cray Wanderers. 7	2	1	4	11	10	5							
Hatfield Town .. 7	1	3	3	8	13	5							
Wimbledon	6	2	0	4	9	13	4						
Wellingborough . 7	1	0	6	13	20	2							
Bedford Town .. 10	1	0	9	7	28	2							
Ipswich Town... 7	6	1	0	29	6	13							
Millwall	7	6	1	0	30	12	13						
Orient	7	5	2	0	30	14	12						
Crystal Palace... 8	5	0	3	27	19	10							
Queen's Park R... 7	3	3	1	14	8	9							
West Ham Un... 7	3	2	2	10	9	8							
Tottenham H. ... 6	3	1	2	16	5	7							
Charlton Athletic. 5	3	1	1	14	8	7							
Chelsea	7	3	1	3	16	17	7						
Colchester United 7	3	0	4	12	18	6							
Luton Town	7	2	1	4	16	21	5						
Reading	9	1	3	5	7	32	5						
Brighton & Hove. 7	2	0	5	10	15	4							
Gillingham	6	2	0	4	6	12	4						
Fulham	7	2	0	5	8	16	4						
Watford	6	1	1	4	7	22	3						
Oxford United ... 8	0	1	7	4	22	1							