



**FOOTBALL LEAGUE CUP  
SEMI-FINAL — 2nd LEG**

**TOTTENHAM  
HOTSPUR**

v.

**ARSENAL**

**Official Programme**

**Price SIXPENCE**



**SEASON 1968-69  
Vol. 61 No. 30**

**Wednesday, 4th Dec., 1968**

**KICK-OFF 7.30 p.m.**



**Southampton v. Spurs.** An awkward moment for Spurs' defence at the Dell.

*Photo by "Southern Evening Echo", Southampton*

# TOTTENHAM HOTSPUR

## FOOTBALL AND ATHLETIC COMPANY LIMITED

Chairman: FREDK. WALE Vice-Chairman: S. A. WALE

Directors: C. F. COX, A. RICHARDSON

Manager: W. E. NICHOLSON Secretary: G. W. JONES Medical Officer: Dr. BRIAN CURTIN

League Champions: 1950-51, 1960-61

F.A. Cup Winners: 1901, 1921, 1961, 1962, 1967

Winners of European Cup Winners Cup: 1963

COPYRIGHT

ALL RIGHTS RESERVED

## COMMENT

THIS evening we reach another landmark in the history of the Club. In the past we have participated on this ground in Semi-final ties in both the European Cup and European Cup-Winners' Cup.

It has never been our experience in the past, however, to stage a Semi-final tie in a major domestic competition in which Spurs are one of the contesting teams.

This circumstance is brought about, of course, by the system in force for the Football League Cup of playing the Semi-final in two legs. Our ground has been used in the past as a neutral venue for Semi-final ties in the F.A. Cup as Arsenal, our most welcome visitors this evening, have good reason to remember.

Tonight's is a quite different occasion, and it gains much by our pairing with our near neighbours from Highbury. The winners of this tie are assured of a place at Wembley on 15th March against the winners of the other Semi-final between Swindon Town and Burnley.

### GOAL BEHIND

As everyone here this evening must know, the first leg was played at Arsenal Stadium a fortnight ago, and we suffered defeat by a goal scored by John Radford in the last minute.

Naturally, we would have been much happier to start tonight with the scores level, but Spurs can draw heart from a comment in Arsenal's own programme for the first leg of the tie.

The passage ran: "... if we win here

this evening by a single goal, Spurs still have a chance to come back and win at White Hart Lane in a fortnight's time . . ."

We hope the latter part of that passage will prove as prophetic as the first, but our players have no illusions about the size of the task confronting them.

### SECOND SEASON

This season is only the second in which Spurs have competed in the League Cup. Our only previous experience of the competition was two seasons ago, when we were defeated 1-0 by West Ham United in our opening tie at Upton Park.

Arsenal have had considerably more experience of the competition, and as finalists last season, are not new to the double-leg semi-final procedure.

Leeds United beat Arsenal 1-0 in last season's Wembley Final after our Highbury neighbours had defeated Huddersfield Town both home and away in the Semi-final matches.

The League Cup was introduced in season 1960-61, but Arsenal did not compete until 1966-67. Their first attempt ended with a home defeat by West Ham after they had beaten Gillingham in a second replay.

Arsenal's progress to the Semi-final this season has been at the expense of Sunderland (1-0), Scunthorpe (6-1), Liverpool (2-1) and Blackpool (5-1). Of these four ties only the Scunthorpe match was away from Highbury.

## ARSENAL v. SPURS (League Cup, Semi-final, 1st Leg)



John Radford scoring Arsenal's last-minute winner.



Joe Kinnear clears with George Graham and George Armstrong in close attendance.

Photos by MONTE FRESCO—DAILY MIRROR

### MAN IN CHARGE

Referee for tonight is Mr. John Gow from Swansea, whose experience of Cup football ranges from the Final of the Welsh Cup to matches in the European and Inter-Cities Fairs Cups.

Mr. Gow started as a referee in 1953, and graduated to the Football League linesmen's list in 1961 via the Welsh League and the Football Combination. After two seasons on the line, he was promoted to the Referees' List.

He has been a F.I.F.A. and E.U.F.A. referee since 1966, and has taken charge of two England v. Scotland Under-23 matches in addition to European Nations Cup ties between Denmark and Hungary, and Czechoslovakia and Russia.

Referee Gow, who is married and has two daughters, was also in charge of the European Cup-tie between Real Madrid and Limassol of Cyprus in Madrid in September.

### RARE PAIRINGS

It is remarkable how frequently some clubs get drawn together in Cup competitions and yet steer clear of others year after year.

Prior to the first leg of the League Cup Semi-final that engages our attentions this evening, Spurs and Arsenal had met only once in a major Cup competition. That was in January, 1949, when we were drawn away to Arsenal in the Third Round of the F.A. Cup.

The League Cup is, of course, a comparatively new competition, but Spurs and Arsenal have both been competing in the F.A. Cup for well over 70 years, and it is strange that we should have met only once in the latter competition.

In contrast, Spurs have been paired with Preston North End on no less than nine occasions. Next come Aston Villa and West Ham, against whom we have been paired eight times, including one tie each in the League Cup, and West Bromwich and Manchester City have both been our opponents on seven occasions in the F.A. Cup.

### ARSENAL'S DAY

Reflection on that Cup visit to Highbury nearly 20 years ago will bring more joy to Arsenal than ourselves. They finished winners by 3—0, and we could have no complaint at the result.

Ted Ditchburn gave a great display in Spurs' goal, but he failed to prevent a header by Ian McPherson from entering our net in the first half. He parried the ball, but failed to hold it.

Spurs rallied after the interval, but our hopes were dimmed when Don Roper moved into the centre to crash in a second goal. When Doug Lishman scored a simple-looking third, the issue was convincingly settled in Arsenal's favour.

This was the line-up:

**ARSENAL:** Swindin; Barnes, Smith, L.; Macaulay, Compton, L., Mercer; Roper, Logie, Rooke, Lishman and McPherson.

**SPURS:** Ditchburn; Tickridge, Buckingham; Nicholson, Woodward, Burgess; Cox, Gilbert, Rundle, Bennett and Jones.

The gate at Highbury that day was 47,314.

### DID YOU KNOW . . .

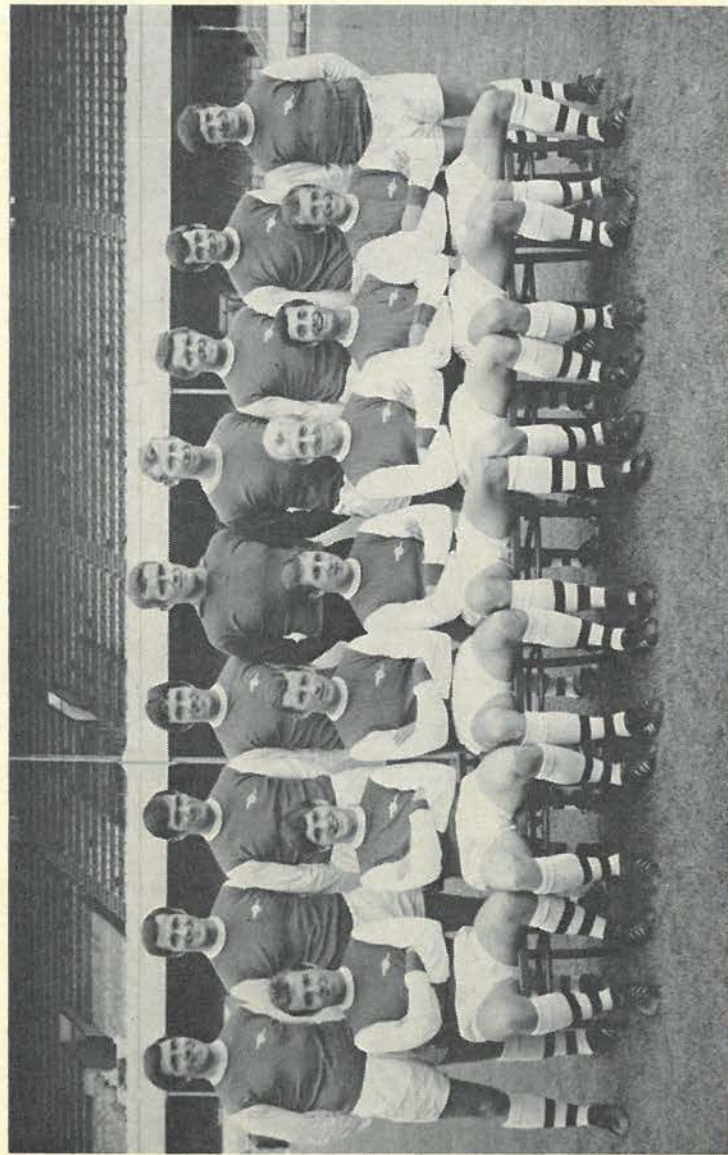
THAT in 1903 an archery contest was staged to raise funds for Arsenal?

THAT Ted Drake, Arsenal's centre-forward, created a First Division record when he scored seven goals in an away match with Aston Villa in December, 1935?

THAT the record attendance for a match at Arsenal Stadium was 73,295 for Sunderland's visit in the League in March, 1935?

### QUIZ FOR TONIGHT—Answers on page 13

1. Which former Arsenal manager was at one time a Spurs player?
2. Which captain won the toss in the first leg of the League Cup Semi-final at Highbury a fortnight ago?
3. Can you name the Spurs forward who made his debut for the club away to Arsenal in February, 1958?
4. Which current Arsenal player has appeared against Spurs at Wembley in the F.A. Cup Final, and when?
5. Who was the last Spurs player to score three goals in a match against Arsenal?



**Arsenal F.C., 1968-69.** Standing, left to right: Bobby Gould, George Graham, Peter Simpson, Jon Sammels, Jim Furnell (now with Rotherham United), Bob Wilson, David Jenkins (now with Spurs), Peter Storey, George Armstrong. Sitting, left to right: David Court, Pat Rice, Terry Neill, John Radford, Ian Ure, Frank McLintock, Bob McNab.

Photo by Universal Pictorial Press & Agency Ltd.

## PEN PICTURES OF ARSENAL . . .

**BOB WILSON** (goalkeeper). Born at Chesterfield, and joined Arsenal as an amateur in the first place. That was in 1963 after he had had a spell as an amateur with Wolverhampton Wanderers. Turned professional with Arsenal in March, 1964, and has been the regular first choice in his position this season.

**PETER STOREY** (full-back). Comes from Farnham in Surrey, and played for England as a schoolboy. Signed for Arsenal as an apprentice professional in May, 1961, and became a full professional in September, 1962. Established himself as a First Division player in season 1965-66.

**BOB McNAB** (full-back). Born at Huddersfield, and made his name with the Huddersfield Town club. Transferred to Arsenal in October, 1966 in face of keen competition from Liverpool. A polished player, McNab now ranks with the best backs in Britain. Played for the Football League against the Irish League in Belfast last week.

**FRANK McLINTOCK** (half-back). A Scottish international who was born in Glasgow, but joined Leicester City as a junior. Made a big name with Leicester, and was transferred to Arsenal in October, 1964. McLintock, who has business interests in property, is now well past the 100 mark in League appearances for Arsenal.

**IAN URE** (half-back). Another Scottish international, who was first selected for his country when playing for Dundee. Born at Ayr, and as a Dundee player was in the same line-up as Alan Gilzean. Joined Arsenal in August, 1963.

**TERRY NEILL** (half-back). Born in Belfast, and played for Bangor, the Irish League club, before joining Arsenal in December, 1959. Neill, who has made many appearances for Ireland, first appeared in Arsenal's League team in season 1960-61, and is now well past the 200 mark for the Gunners.

**PETER SIMPSON** (half-back). A native of Gorleston in Norfolk, who joined Arsenal's ground staff in May, 1960. In October, 1961 he became an

apprentice, and in the following May he was signed as a full professional. First appeared in Arsenal's League team during season 1963-64.

**DAVID COURT** (half-back). Better described, perhaps as a midfielder, Court is a Londoner from Mitcham. Joined Arsenal's ground staff in April, 1959, and has played in a variety of positions. Has been a full professional since January, 1962.

**JOHN RADFORD** (forward). Comes from Hemsforth, near Pontefract in Yorkshire, a familiar spot to our own Cyril Knowles. Has been a full-time professional with Arsenal since February, 1964, and we need no reminder that he scored their last-minute goal against us in the first leg of tonight's League Cup Semi-final at Highbury. Played for the Football League against the Irish League last week.

**JON SAMMELS** (inside-forward). An Ipswich man who joined Arsenal as an apprentice in January, 1961, and has been a full professional since July, 1962. Played for England Youth, and has also been honoured at Under-23 level.

**GEORGE GRAHAM** (centre-forward). A Scotsman who started his career in English football with Aston Villa. In July, 1964, Graham was transferred from Villa to Chelsea, and in October, 1966 he made the further move to Arsenal in the deal that took inside-forward Tommy Baldwin in the reverse direction.

**BOBBY GOULD** (inside-forward). Signed from Coventry City early last February, and made his first appearance for Arsenal against Manchester City at Maine Road the following day. Born in Coventry, and joined his local club as a youngster. Has scored goals against Scunthorpe and Blackpool in the League Cup this season.

**GEORGE ARMSTRONG** (outside-left). Gained his first England Under-23 cap in season 1964-65. Comes from County Durham, and arrived at Highbury as an inside-forward trialist in August, 1961, and signed right away as a full professional.

SPURS DEVELOPMENT SOCIETY No. 1

# ★ DAILY DRAW ★

## PRIZES £150 WEEKLY

- ★ £75 EACH SATURDAY
- ★ £10 and £5 EACH DAY (MONDAY TO FRIDAY)
- ★ Tickets, 1s. each, from Agents or the Pools Office

AGENTS REQUIRED

- ★ Commission on Sales
- ★ Special Prizes every week

Wherever you live and are interested in the Daily Draw, you could become an Agent for the Development Society. Full details will be supplied on completion of the application form below, which can be sent by post, or handed in at the Pools Office in the main entrance.

Please send me, without obligation, details of the Daily Draw.  
(I am over 21 years of age.)

NAME.....  
(Block letters)

ADDRESS.....

..... Phone.....

To Pools Organiser:  
Spurs Development Society, 748 High Road, Tottenham, N.17

### FORTHCOMING FIXTURES

Saturday, 7th December, 1968

## NORTHAMPTON TOWN RESERVES

Football Combination

Kick-off 3 p.m.

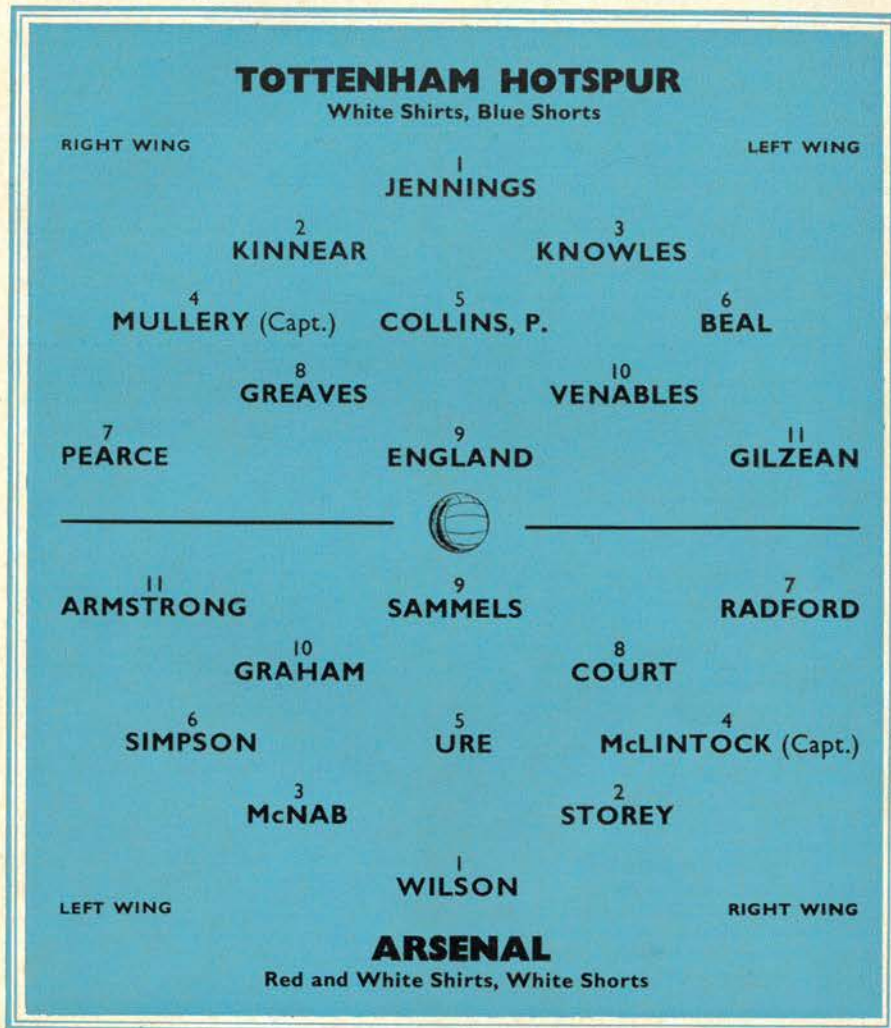
Saturday, 14th December, 1968

## MANCHESTER CITY

Football League, Division 1

Kick-off 3 p.m.

League Cup, Semi-Final, 2nd Leg Kick-off 7.30 p.m.



Referee: Mr. W. J. GOW, Glam.

Linesmen: Mr. F. E. BURLING, Cambs. (Red Flag)  
Mr. W. MORRIS, Northants (Yellow Flag)

Substitutes: (Home Club)..... (Visiting Club).....

## THE LEAGUE CUP

The Football League Cup has made vast strides as a competition since its inception in season 1960-61. The sharp increase in gate figures since the early seasons of its existence has reflected the growing popularity of the competition with the public, and the decision to stage the Final at Wembley added both glamour and stature to the tournament.

Prior to 1967, the Final was staged in two legs on the grounds of the competing clubs, the aggregate score over the two matches deciding the winners.

In the first season many clubs had great difficulty in fitting in the extra fixtures, and it is a fact that the first Final—between Aston Villa and Rotherham United—had to be held over until the following season!

### FINAL AT ROCHDALE

By the end of season 1961-62 (the League Cup's second campaign) the fixture complications had eased, and the double-leg Final was played off by the first day in May.

The competing finalists that season were Norwich City and Rochdale. The first leg, on the ground of Fourth Division Rochdale, was won 3-0 by Norwich before a crowd of 11,123.

The gate at Norwich for the second leg, won 1-0 by the Canaries, was 19,708. What a contrast to last season's 100,000 crowd at Wembley for the Leeds-Arsenal Final, and the capacity crowd that can be anticipated for the same event in March.

### WINNERS

Here is the full list of League Cup Final results:

1960-61	Aston Villa 3, Rotherham United 2 Agg.
1961-62	Norwich 4, Rochdale 0 Agg.
1962-63	Birmingham City 3, Aston Villa 1 Agg.
1963-64	Leicester 4, Stoke 3 Agg.
1964-65	Chelsea 3, Leicester 2 Agg.
1965-66	West Bromwich Albion 5, West Ham United 3 Agg.
1966-67	Queen's Park Rangers 3, West Bromwich Albion 2
1967-68	Leeds United 1, Arsenal 0

It is worthy of note that a London club will contest the Final this season for the fifth year in succession.

## REPLAY PLANS

If the aggregate score is level after extra time tonight, the third match will take place at Stamford Bridge, Chelsea's ground, on Wednesday, 18th December, 1968, kick-off at 8 p.m. This will be an "ALL-TICKET" match.

### PRICES

Ground, 5s.

Unreserved seats obtainable only by payment of an additional transfer charge of 4s. once inside the ground.

Reserved seats: 10s., 12s., 6d., 17s. 6d.

Our allocation of tickets will be on sale on Sunday, 8th December, 1968, at 10 a.m.

Ground tickets: Two per person if required.

Seats will be available to **season-ticket holders** only, on production of coupon "B" from their ticket books, properly completed, until supplies are exhausted.

Where season-ticket holders are unable to come to the ground on Sunday postal bookings will be accepted for **12s. 6d.** seats only, provided that applications, which must include coupon "B", the correct remittance and a stamped addressed envelope, are received here not later than Saturday, 7th December, after which date no guarantee can be given that seats will be available.

### WE REGRET THAT NO ADDITIONAL SEATS CAN BE SUPPLIED

### ANNOUNCEMENT TO ARSENAL SUPPORTERS

Ground tickets (two per person if required) will be on sale at Highbury on Sunday, 8th December, 1968, at 10 a.m. No postal applications for ground tickets will be accepted.

**SEATS:** Arsenal F.C. regret that they can only accept applications from season-ticket holders, who have already been notified of the procedure for obtaining their tickets.

### SECOND VISIT

Arsenal's visit this evening is of course, their second this season. Our League season opened in August with a home match against Arsenal, and most spectators here tonight will recall their 2-1 victory over us.

It was a good start for Arsenal, and their away record since has also been impressive. They have also won at Ipswich (2-1), Southampton (2-1), Nottingham Forest (2-0) and Burnley (1-0). Arsenal have also drawn away to Wolverhampton (0-0), Manchester United (0-0) and Manchester City (1-1).

John Radford leads Arsenal's list of goalscorers in the League with nine. The other 14 have been scored by David Jenkins (3), Terry Neill, Bobby Gould and David Court (2 each); Frank McLintock, Jimmy Robertson, Jon Sammels and George Armstrong (1 each); and Phil Beal (Spurs) own goal.

Arsenal's scorers in the League Cup are Jenkins and Radford (3 each); Gould, Simpson and Armstrong (2 each); Court, Neill and Sammels (1 each).

### PENALTY DECIDER

#### Southampton 2, Spurs 1

The postponement of our home match with Queen's Park Rangers on Saturday owing to the unfit state of the pitch came as a big disappointment, especially as the team were hoping to regain their winning touch after the events of the previous week's game at Southampton.

Our overall performance at Southampton was far from good, but the nature of the goal that defeated us would have been a body-blow to most teams.

It has long been our policy to refrain from reference to decisions affecting us on the field. The referee is the sole arbiter, and his decisions have to be accepted.

Nevertheless, it is a fact that most people at the Dell were mystified when a penalty was awarded to Southampton in the 59th minute. The explanation of the award by the referee after the match was that "Knowles had handled the ball".

Ron Davies converted the spot-kick, and we never regained our earlier grip. Mike England had put Jimmy Greaves through to score in the eighth minute, and our prospects remained bright until Davies rammed home the equaliser just after half-time.

Team: Jennings; Kinnear, Knowles; Mullery, Collins, P. (sub. Want), Beal; Pearce, Greaves, England, Venables and Gilzean. Attendance: 27,384.

### Spurs Res. 3, Cardiff City Res. 0

The Reserves were good winners over Cardiff in their last home match on the previous Saturday. Roy Woolcott scored the only goal of the first half, and also netted our third towards the end.

Our other goal was scored by John Gilroy, who came on as substitute in the first half for Dennis Bond, victim of a ligament injury.

Team: Skeet; Cutbush, Collins, J.; Evans, T. Naylor, Pratt; Pitt, Bunkell, Bond (sub. Gilroy), Woolcott and Mail.

### END OF RUN

#### Fulham Res. 2, Spurs Res. 0

After a run of 12 successive wins in Combination Cup and League matches, the Reserves were beaten in a good match, played in heavy conditions, at Fulham on Saturday. Fulham, who snatched a goal in each half, fielded experienced players in George Cohen, Jack McClelland, Reg Matthewson and Malcolm Macdonald.

Team: Skeet; Cutbush, Collins, J.; Evans, T. Naylor, Pratt; Johnson, Jenkins, Bunkell, Woolcott and Mail.

Although the design has changed over the years, Arsenal have worn red shirts since their formation in 1886.

### REG JARVIS

The death of Mr. Reg Jarvis, who was Secretary to the Club until his retirement owing to ill-health last year, has saddened everyone who knew him.

Mr. Jarvis joined Spurs' staff in 1933, and succeeded long-serving Arthur Turner as Secretary in 1949. He served the Club loyally and well, and his courtesy, patience and efficiency earned him deep respect throughout the football world.

Earlier this year he was awarded the Football League Long-service Medal.

The Club Directors, members of the staff and players attended the funeral which took place at St. Marylebone Crematorium last Wednesday.

## SPURS v. SUNDERLAND



Jimmy Greaves heads past goalkeeper Jim Montgomery for our first goal.



Alan Gilzean shoots as Sunderland's defence closes in.

Photos by Atkins Photos, Tottenham

## SEMI-FINALS

Arsenal have played four F.A. Cup Semi-final matches here at White Hart Lane. In 1950 they drew 2-2 with Chelsea, and won the replay, also held here, by 1-0.

Two years later we again staged an Arsenal-Chelsea Semi-final. That time it was drawn 1-1, and the replay, again on this ground two days later, was won by Arsenal 3-0.

## AWAY TO WOLVES

British Rail have advised us that a special train, with buffet facilities, will run to Wolverhampton and back in connection with our away match on Saturday.

Departure time from Euston is 11.40, arriving Wolverhampton at 13.32. The return timing is 17.30 from Wolverhampton, arriving Euston at 19.20.

The return fare is 35s. (no reduction for juveniles under 14) and tickets are only available from Euston Station. Cheap day half-fares will not be available on the scheduled morning services.

Henry Coaches will operate a service to Wolverhampton at a return fare of 19s. Coaches will leave Whitehall Street (opposite ground) at 9.15 a.m. and No. 1 Broad Lane, N.15 at 9.30 a.m.

## FOR THE RECORD

SATURDAY, 16TH NOVEMBER

SPURS 5, SUNDERLAND 1

(Football League, Division 1)

Team: Jennings; Kinnear, Knowles; Mullery, Collins, P., Beal; Pearce, Greaves, England, Venables and Gilzean.

Goalscorers: Greaves (4), England.

SPURS "A" 2, WELLINGBOROUGH T. 0  
(Metropolitan League)

Team: Daines; Holder, P., Bish; T. Naylor, Evans, Henry; Pitt, V. Cogger, A. McCulloch Gilroy and Neighbour.

Goalscorers: A. McCulloch, Henry.

MONDAY, 18TH NOVEMBER

SPURS 2, WEST HAM UNITED 2

(Final, London Challenge Cup)

Team: Skeet; Cutbush, Collins, J.; Evans, Pratt, Want; Johnson, Bunkell, Bond, Woolcott and Mail (sub. Pitt).

Goalscorers: Woolcott, Bunkell.

WEDNESDAY, 20TH NOVEMBER

ARSENAL 1, SPURS 0

(Football League Cup Semi-final, First Leg)

Team: Jennings; Kinnear, Knowles; Mullery, Collins, P., Beal; Pearce, Greaves, England, Venables and Gilzean.

## DEVELOPMENT SOCIETIES

**DAILY DRAW.** The results of the draw run by the Spurs Development Society No. 1 were as follows:

Week ended 23rd Nov. (Week No. 6)	
	£10 £5
Monday . . . . .	7797 2242
Tuesday . . . . .	5235 6082
Wednesday . . . . .	3914 2989
Thursday . . . . .	1483 5927
Friday . . . . .	0727 5792
Saturday . . . . .	7739—£75

Week ended 30th Nov. (Week No. 7)

Week ended 30th Nov. (Week No. 7)	
	£10 £5
Monday . . . . .	1879 3150
Tuesday . . . . .	6358 6658
Wednesday . . . . .	5719 3320
Thursday . . . . .	5875 6946
Friday . . . . .	0208 3403
Saturday . . . . .	6894—£75

Tickets prices 1s. each can be obtained from the Pools Office in the main entrances or through agents.

## NEW AGENTS REQUIRED

**RING 808 0281**

**"GOAL-TIME".** The following were the winning times in the competition held by the Development Society No. 2: 16th November—**Sunderland**

1st Goal	09 min. 17 sec.	£50
2nd Goal	15 min. 43 sec.	£25
3rd Goal	43 min. 59 sec.	£10

These competitions are held on home first team matches only, and tickets, prices 1s. each, can be obtained from the officially-appointed sellers.

## SPURS SCORERS

**League Div. I:** Greaves 20; Jones and Gilzean 5 each; Chivers 3; England 2; Robertson, Pearce and Mullery 1 each.  
**League Cup:** Greaves 4; Chivers 3; Pearce 2; Jones, Venables and Collins, P. 1 each.

## ANSWERS TO QUIZ

1. The late Herbert Chapman.
2. Arsenal's Frank McLintock, who elected to kick towards the Clock End.
3. Cliff Jones, now with Fulham.
4. Frank McLintock, who was in the Leicester City team beaten by Spurs in the Final of 1961.
5. Terry Dyson scored a hat-trick in Spurs' 4-3 win against Arsenal in August, 1961.

## FOOTBALL LEAGUE—DIVISION I

### FIRST TEAM FIXTURES

Date	Opponents	Ground	For	Ag.
Wed. July 31	Glasgow Rangers (Friendly)	Home	3	1
Sat. Aug. 3	F.K. Austria (Friendly)	Away	2	2
Sat. " 10	Arsenal	Home	1	2
Sat. " 17	Everton	Away	2	0
Wed. " 21	West Bromwich Albion	Home	1	1
Sat. " 24	Sheffield Wednesday	Home	1	2
Wed. " 28	Manchester United	Away	1	3
Sat. " 31	Chelsea	Away	2	2
Wed. Sept. 4	Aston Villa (League Cup, 2nd Round)	Away	4	1
Sat. " 7	Burnley	Home	7	0
Sat. " 14	West Ham United	Away	2	2
Tues. " 17	Coventry City	Away	2	1
Sat. " 21	Nottingham Forest	Home	2	1
Wed. " 25	Exeter City (League Cup, 3rd Round)	Home	6	3
Sat. " 28	Newcastle United	Away	2	2
Sat. Oct. 5	Leicester City	Home	3	2
Wed. " 9	Manchester United	Home	2	2
Sat. " 12	Manchester City	Away	0	4
Wed. " 16	Peterborough Un. (League Cup, 4th Rd.)	Home	1	0
Sat. " 19	Liverpool	Home	2	1
Sat. " 26	Ipswich Town	Away	1	0
Wed. " 30	Southampton (League Cup, 5th Round)	Home	1	0
Sat. Nov. 2	Stoke City	Home	1	1
Sat. " 9	Leeds United	Away	0	0
Sat. " 16	(1) Sunderland	Home	5	1
Wed. " 20	Arsenal (League Cup, Semi-final, 1st Leg)	Away	0	1
Sat. " 23	Southampton	Away	1	2
Wed. Dec. 4	Arsenal (League Cup, Semi-final, 2nd Leg)	Home	1	0
Sat. " 7	(2) Wolverhampton Wanderers	Away	1	2
Sat. " 14	Manchester City	Home	1	1
Sat. " 21	Liverpool	Away	1	1
Thur. " 26	Leicester City	Away	1	1
Sat. " 28	Ipswich Town	Home	1	1
1969				
Sat. Jan. 4	(3) <b>Walsall</b>	Away	1	0
Sat. " 11	Stoke City	Away	1	0
Sat. " 18	Leeds United	Home	0	0
Sat. " 25	(4) <b>Wolverhampton W.</b>	Home	0	0
Sat. Feb. 1	Sunderland	Away	0	1
Sat. " 8	(5) Southampton	Home	1	1
Sat. " 15	Queen's Park Rangers	Away	1	1
Sat. " 22	Wolverhampton Wanderers	Home	1	1
Sat. Mar. 1	(6) Arsenal	Away	1	1
Sat. " 8	Everton	Home	1	1
Sat. " 15	Sheffield Wednesday	Away	1	1
Sat. " 22	(S.F.) Chelsea	Home	1	1
Sat. " 29	Burnley	Away	1	1
Wed. Apr. 2	Newcastle United	Home	1	1
Fri. " 4	Coventry City	Home	1	1
Mon. " 7	West Bromwich Albion	Away	1	1
Sat. " 12	Nottingham Forest	Away	1	1
Sat. " 19	West Ham United	Home	1	1
Sat. " 26	F.A. Cup Final	Home	1	1
	Queen's Park Rangers	Home	1	1

© Copyright The Football League Limited 1968

## FOOTBALL COMBINATION

### RESERVE TEAM FIXTURES

Date	Opponents	Ground	For	Ag.
Sat. Oct. 5	Bristol City	Away	4	1
Sat. " 12	Gillingham	Home	2	0
Mon. " 14	Millwall (Lon. Challenge Cup, 2nd Rd.)	Home	8	2
Sat. " 19	Leicester City	Away	2	0
Sat. " 26	Luton Town	Home	8	0
Mon. " 28	Enfield (Lon. Challenge Cup, S/Final)	Home	3	1
Sat. Nov. 2	Southampton	Away	1	0
Sat. " 9	Oxford United	Home	5	0
Mon. " 18	West Ham U. (Lon. Challenge Cup, Final)	Home	2	2
Sat. " 23	Cardiff City	Home	3	0
Sat. " 30	Fulham	Away	0	2
Sat. Dec. 7	Northampton Town	Home	2	0
Wed. " 11	*Southampton (Semi-Final, 1st Leg)	Away	0	2
Sat. " 14	Queen's Park Rangers	Away	1	0
Mon. " 16	West Ham U. (Lon. Chal. Cup Final, Replay)	Away	2	3
Sat. " 21	Reading	Home	4	1
Sat. " 28	Ipswich Town	Away	1	6
1969				
Sat. Jan. 4	Plymouth Argyle	Home	5	0
Sat. " 11	Bristol Rovers	Home	2	1
Sat. " 25	Chelsea	Away		
Sat. Feb. 1	Swansea Town	Home		
Sat. " 15	Birmingham City	Away		
Sat. Mar. 1	Peterborough United	Home		
Sat. " 8	West Ham United	Away		
Sat. " 15	Bournemouth & B.A.	Home		
Sat. " 22	Crystal Palace	Away		
Sat. " 29	Arsenal	Home		

© Copyright The Football League Limited 1968

\* Combination Cup

### 'A' TEAM — METROPOLITAN LEAGUE

Sat. Oct. 12	*Bletchley	Home	0	3
Sat. " 19	Arsenal	Home	4	0
Sat. " 26	Romford	Home	4	4
Sat. Nov. 2	*Metropolitan Police	Home	1	0
Sat. " 9	West Ham United	Home	2	2
Sat. " 16	Wellingborough Town	Home	2	0
Sat. Dec. 7	Hatfield Town	Home	2	2
Sat. " 14	Chelmsford City	Home	2	1
Sat. " 21	*Hatfield Town	Away	3	1
Sat. " 28	Metropolitan Police	Away	2	2
1969				
Sat. Jan. 11	Stevenage Athletic	Home	1	1
Sat. " 18	Cray Wanderers	Home		
Sat. " 25	Wimbledon	Home		
Sat. Feb. 1	Chelmsford City	Away		
Sat. " 15	Romford	Away		
Sat. " 22	Arsenal	Away		
Sat. Mar. 1	Stevenage Athletic	Away		
Sat. " 22	Bletchley	Home		
Sat. " 29	Braintree & Crittall Athletic	Away		

\* Autumn Shield



## LEAGUE TABLES

### FOOTBALL LEAGUE

### FOOTBALL COMBINATION

DIVISION I								Up to and incl. 30th Nov.								Goals																																																																																																																																																																																																																																																																																																																																																															
Up to and incl. 30th Nov.								Goals								Up to and incl. 30th Nov.								Goals																																																																																																																																																																																																																																																																																																																																																							
				P.	W.	D.	L.					P.	W.	D.	L.					P.	W.	D.	L.																																																																																																																																																																																																																																																																																																																																																								
				F.	A.	Ps.					F.	A.	Ps.					F.	A.	Ps.																																																																																																																																																																																																																																																																																																																																																											
Liverpool	21	14	4	3	40	13	32	Queen's Park R.	9	6	3	0	26	11	15	Tottenham Hotspur	8	7	0	1	25	3	14	Fulham	8	7	0	1	25	8	14	Arsenal	8	5	3	0	19	5	13	Crystal Palace	9	6	1	2	13	9	13	West Ham Un.	21	9	8	4	42	24	26	Bristol Rovers	9	6	1	2	20	14	13	West Ham United	9	3	6	0	17	9	12	Chelsea	21	9	7	5	36	22	25	Oxford United	8	4	2	2	13	13	10	<b>Tottenham H.</b>	<b>20</b>	<b>8</b>	<b>7</b>	<b>5</b>	<b>38</b>	<b>29</b>	<b>23</b>	Cardiff City	8	4	2	2	9	9	10	West Bromwich	21	9	5	7	33	36	23	Gillingham	9	4	2	3	9	11	10	Burnley	21	10	3	8	29	35	23	Ipswich Town	8	3	3	2	21	13	9	Sheffield Wed.	20	7	8	5	25	24	22	Southampton	8	4	0	4	11	6	8	Newcastle Un.	21	6	8	7	30	31	20	Norwich City	8	2	4	2	18	12	8	Manchester Un.	20	6	8	6	24	26	20	Birmingham City	10	4	0	6	19	17	8	Southampton	21	7	6	8	28	33	20	Leicester City	9	4	0	5	16	20	8	Wolverhampton	21	6	7	8	23	25	19	Swansea Town	10	2	3	5	16	26	7	Sunderland	21	6	7	8	24	37	19	Chelsea	8	2	2	4	15	15	6	Manchester City	21	5	7	9	30	30	17	Northampton Town	7	3	0	4	10	15	6	Ipswich Town	21	6	5	10	28	33	17	Peterborough Un.	8	1	4	3	7	15	6	Stoke City	21	5	5	11	19	31	15	Plymouth Argyle	8	2	1	5	6	10	5	Coventry City	21	3	6	12	19	35	12	Reading	9	2	1	6	8	27	5	Leicester City	21	3	6	12	18	42	12	Bristol City	6	2	0	4	9	12	4	Nottingham F.	19	1	9	9	24	33	11	Luton Town	9	1	2	6	10	30	4	Queen's Park R.	20	3	5	12	24	47	11	Walsall	6	1	1	4	12	18	3									Bournemouth & B.A.	8	0	3	5	9	20	3	Swindon Town	7	0	0	7	2	17	0

### METROPOLITAN LEAGUE

### SOUTH-EAST COUNTIES

Up to and incl. 30th Nov.								Goals								DIVISION I																																																																																																																																																																																																																																															
Up to and incl. 30th Nov.								Goals								Up to and incl. 30th Nov.								Goals																																																																																																																																																																																																																																							
				P.	W.	D.	L.					P.	W.	D.	L.					P.	W.	D.	L.																																																																																																																																																																																																																																								
				F.	A.	Ps.					F.	A.	Ps.					F.	A.	Ps.																																																																																																																																																																																																																																											
<b>Tottenham H.</b>	<b>12</b>	<b>8</b>	<b>2</b>	<b>2</b>	<b>34</b>	<b>16</b>	<b>18</b>	Ipswich Town	13	11	2	0	46	8	24	Millwall	13	11	2	0	57	17	24	Orient	12	8	4	0	42	17	20	Bletchley	11	6	2	3	16	10	14	Queen's Park R.	13	7	4	2	27	16	18	Met. Police	11	7	0	4	31	28	14	Crystal Palace	13	8	0	5	37	26	16	Bury Town	9	6	1	2	18	6	13	<b>Tottenham H.</b>	<b>13</b>	<b>6</b>	<b>2</b>	<b>5</b>	<b>29</b>	<b>15</b>	<b>14</b>	Chelmsford City	14	5	3	6	25	24	13	Charlton Athletic	12	5	4	3	25	15	14	Cray Wanderers	11	5	2	4	20	14	12	Chelsea	14	6	2	6	33	27	14	Braintree & Crit.	10	5	2	3	14	10	12	Colchester Un.	14	6	1	7	21	35	13	Romford	13	4	4	5	31	33	12	West Ham Un.	14	4	4	6	17	29	12	Sheppey United	10	5	1	4	24	23	11	Reading	14	4	4	6	20	41	12	Arsenal	13	5	1	7	16	27	11	Fulham	12	4	2	6	15	20	10	Hatfield Town	12	2	6	4	17	20	10	Luton Town	14	3	3	8	25	37	9	Wellingborough	12	4	0	8	21	27	8	Brighton & Hove	14	3	1	10	18	34	7	Wimbledon	8	2	1	5	9	15	5	Gillingham	12	3	1	8	8	21	7	Bedford Town	14	1	2	11	12	36	4	Watford	13	2	2	9	16	43	6									Oxford United	12	0	2	10	5	40	2